

4436



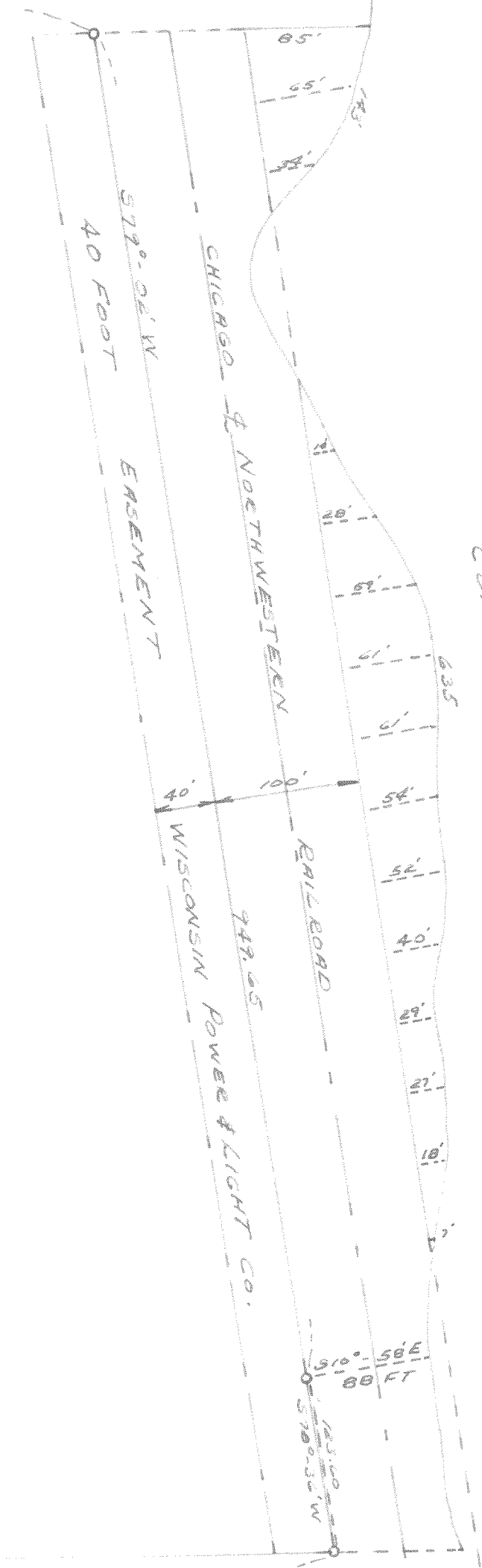
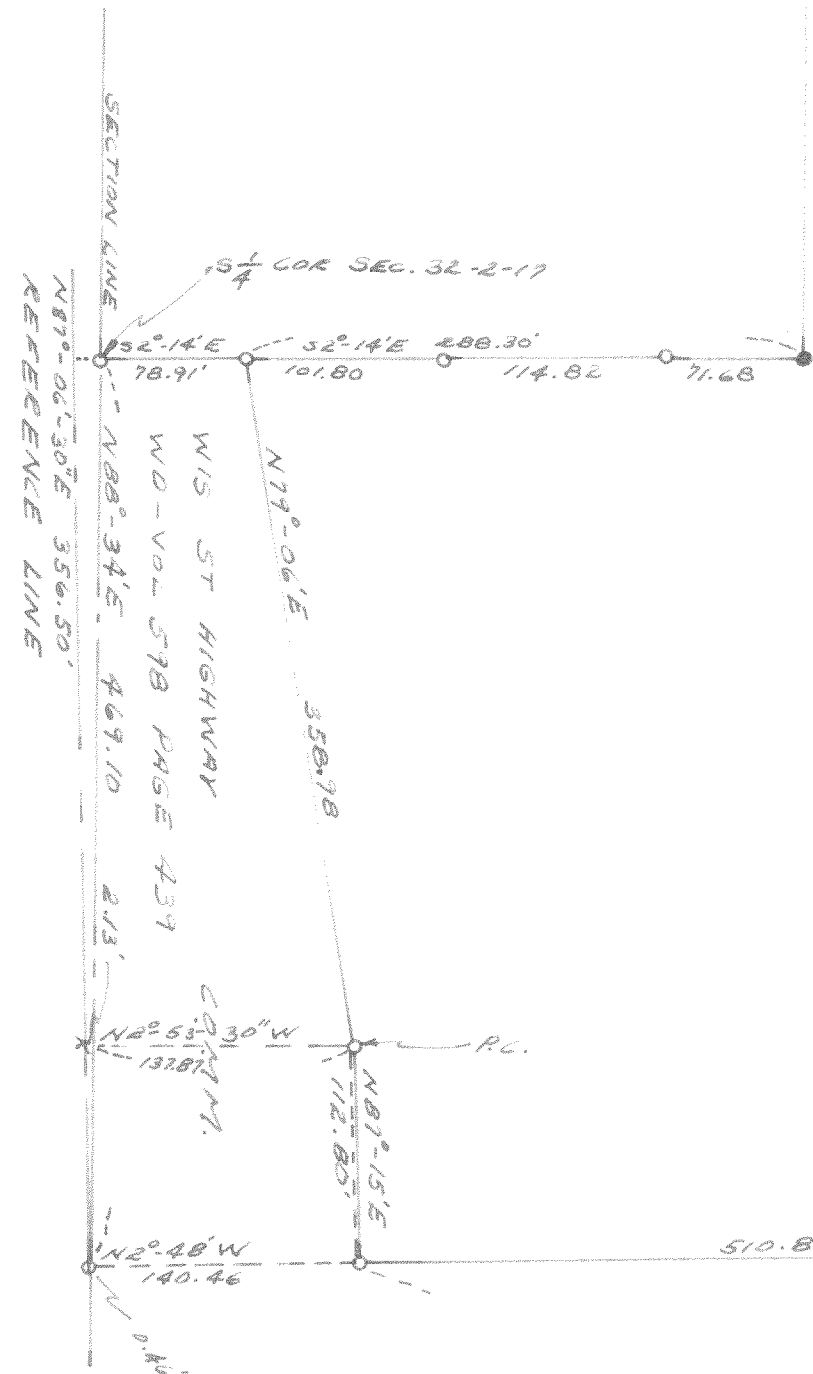
PLAT OF SURVEY OF
PART OF S 1/2 SECTION 32,
T2N, R17E, WAL. CO., WIS.
AUG 1964

Lloyd K. Jensen
CO. SURVEYOR

N 88°-32'E 570.85'

53°-13'E 327.72'
292.82'
865.10'
244.56'

26.46 ACRES



CAMO LAKE

510.88'
369.24'
387.95'
1270.07'

N 2°-48'W