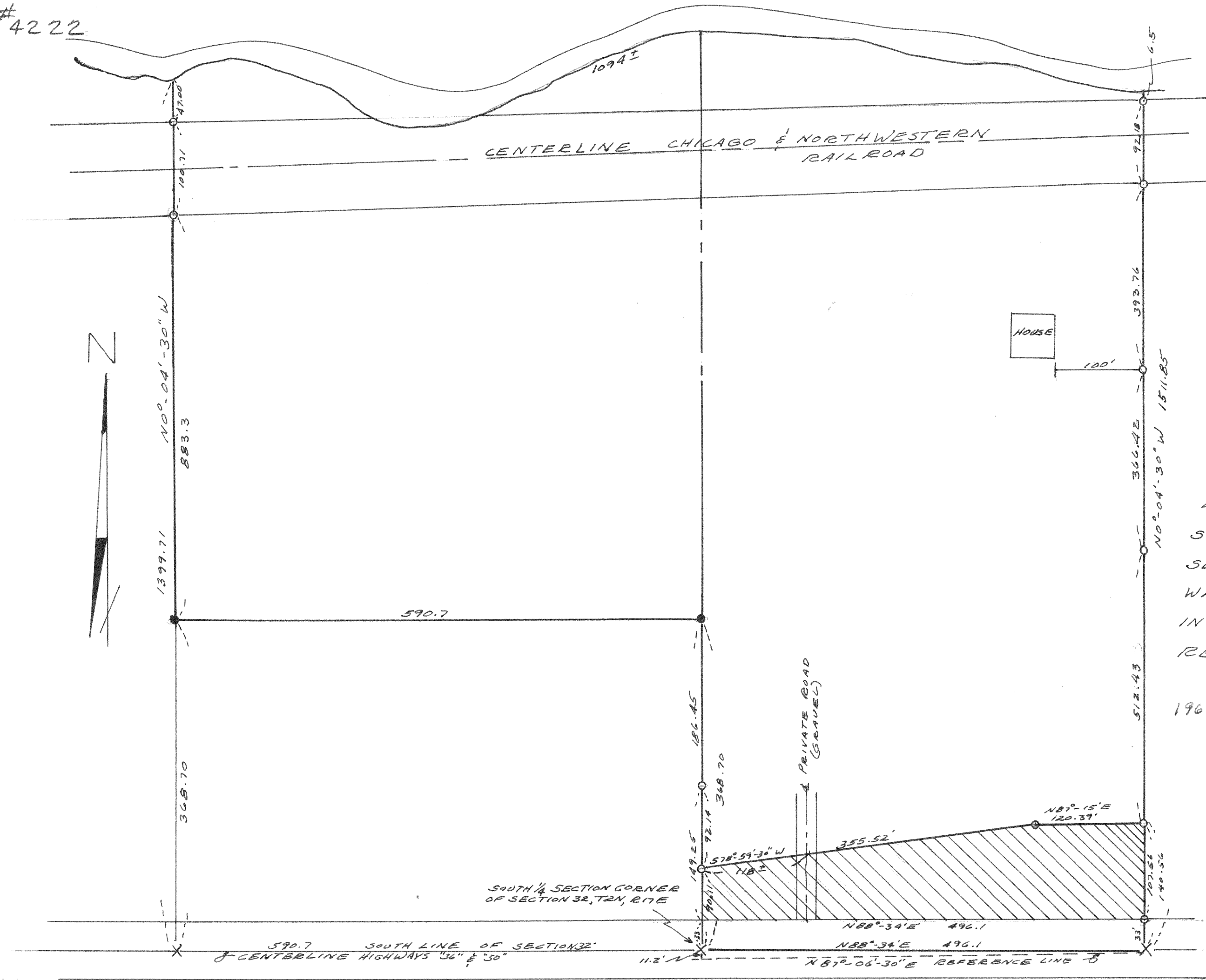


#4222



PLAT OF SURVEY  
 OF  
 LAND LOCATED IN THE  
 SOUTH HALF OF FRACTIONAL  
 SECTION 32, T2N, R17E  
 WALWORTH COUNTY, WIS.  
 IN ACCORDANCE WITH  
 RECORDS AVAILABLE.

1964  
*Lloyd Jensen*  
 COUNTY SURVEYOR