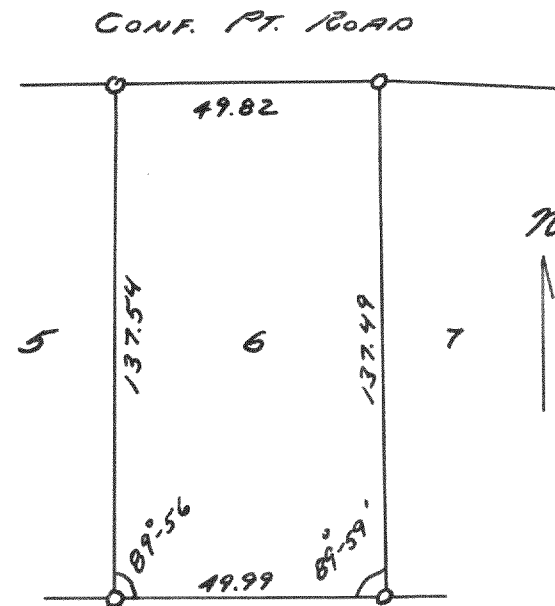


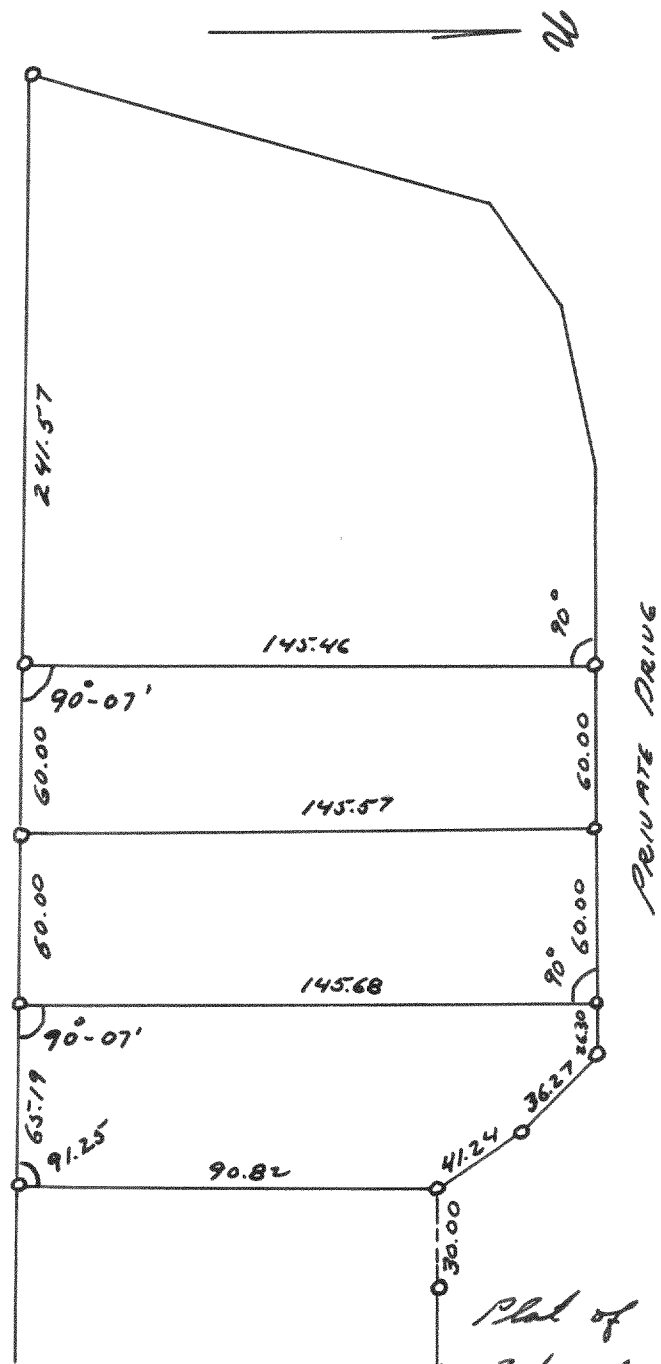
# 2784



Plat of Survey of Lot 6  
of Summerhaven Village of  
Williams Bay July 1953

LLJ  
CS

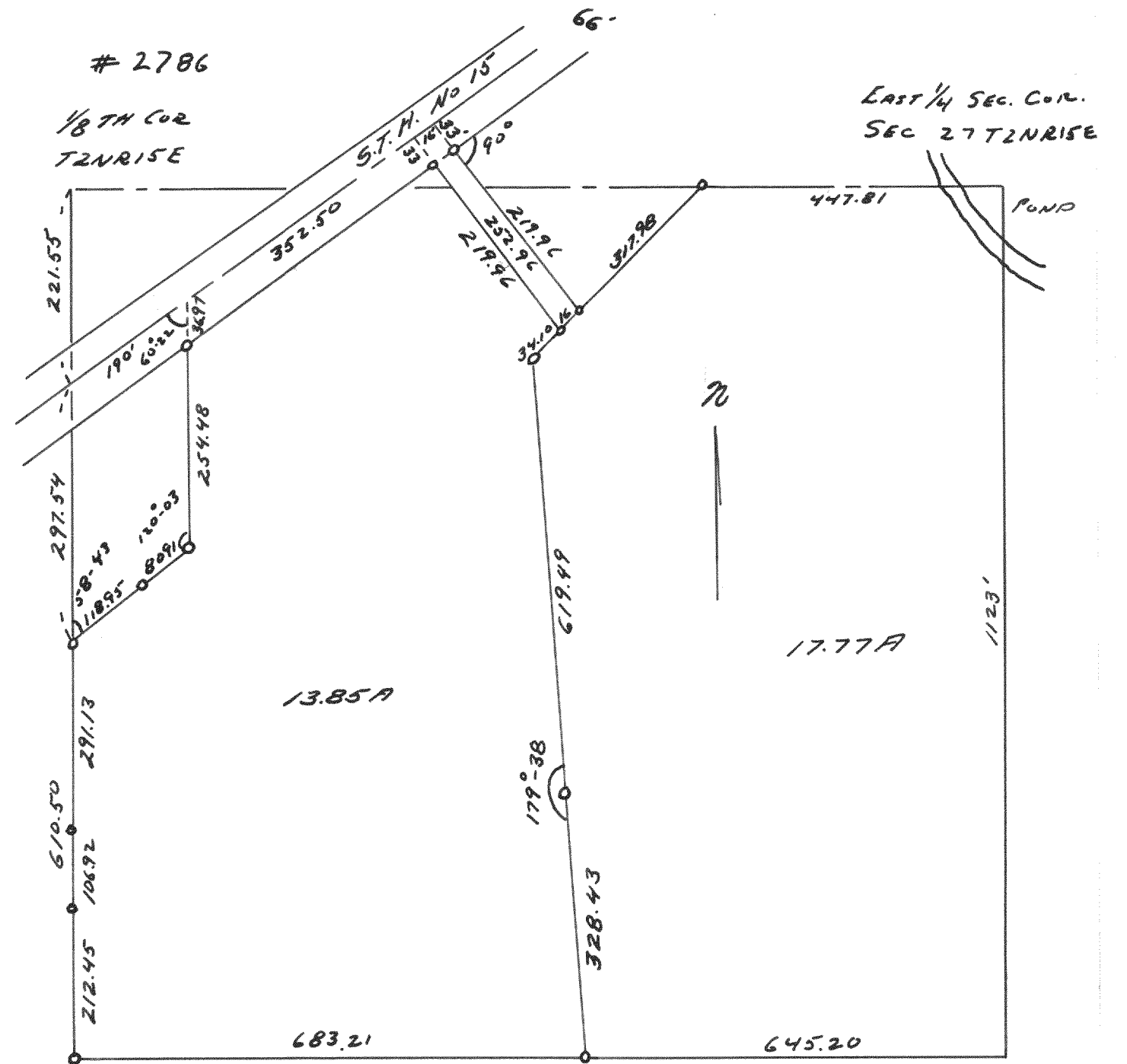
# 2785



Plat of Survey of  
Part of Lot 10 of  
Jewell's Sub.  
Village of Williams Bay  
July 1953

LLJ  
CS

# 2786



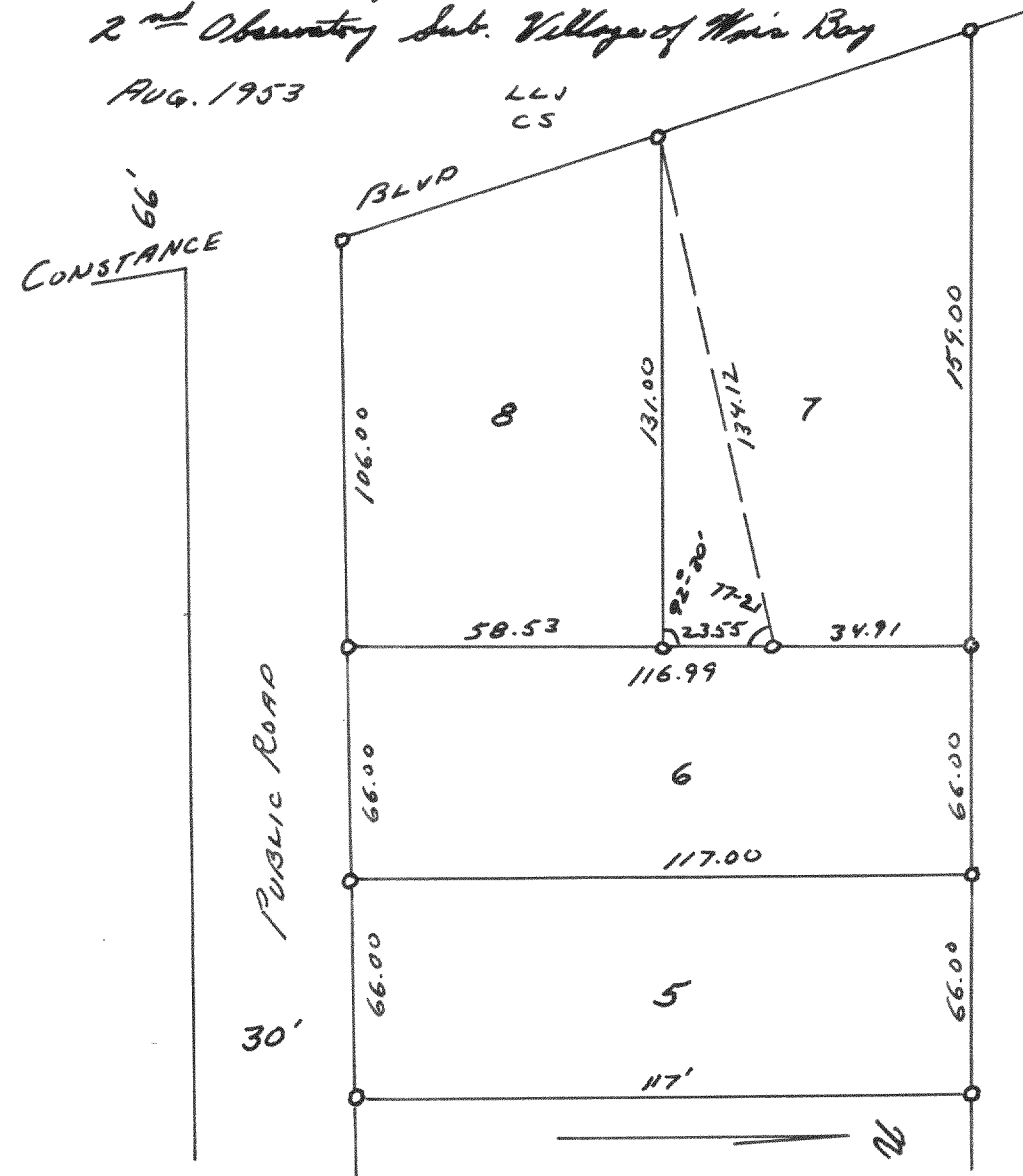
Plat of Survey of Land Located in Part 1/2  
of Section 27 T2N R15E  
April 1953

LLJ  
CS

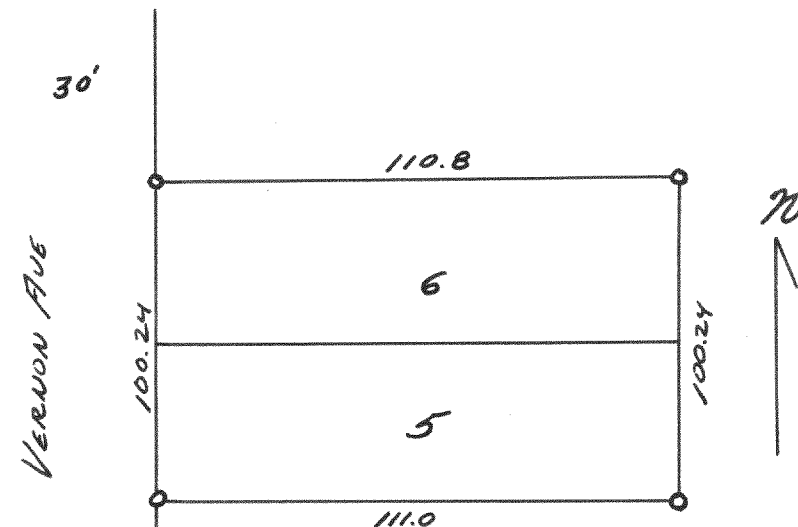
# 2787

Plat of Survey of Lots 5-8 in  
2<sup>nd</sup> Observatory Sub. Village of Williams Bay  
AUG. 1953

LLJ  
CS



# 2788



Plat of Survey of Lots 5 & 6 of Lockwood Subdivision  
Village of Williams Bay  
Aug. 1953

LLJ  
CS