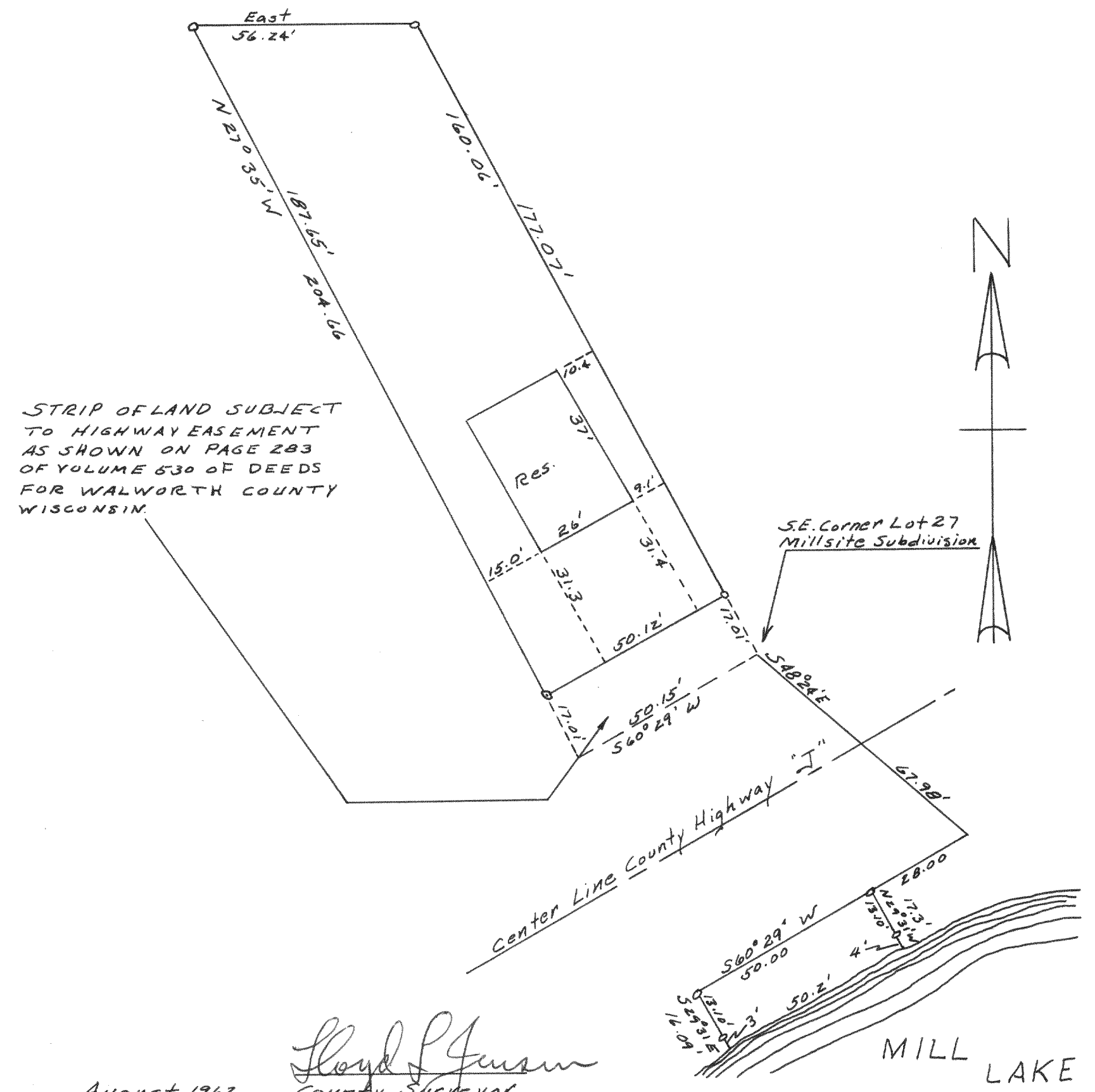


# 4043

PLAT OF SURVEY OF  
Part of Lot 27, Millsite Subdivision  
located in the Northwest 1/4 of Section 4,  
T4N, R18E, Walworth County, WISCONSIN

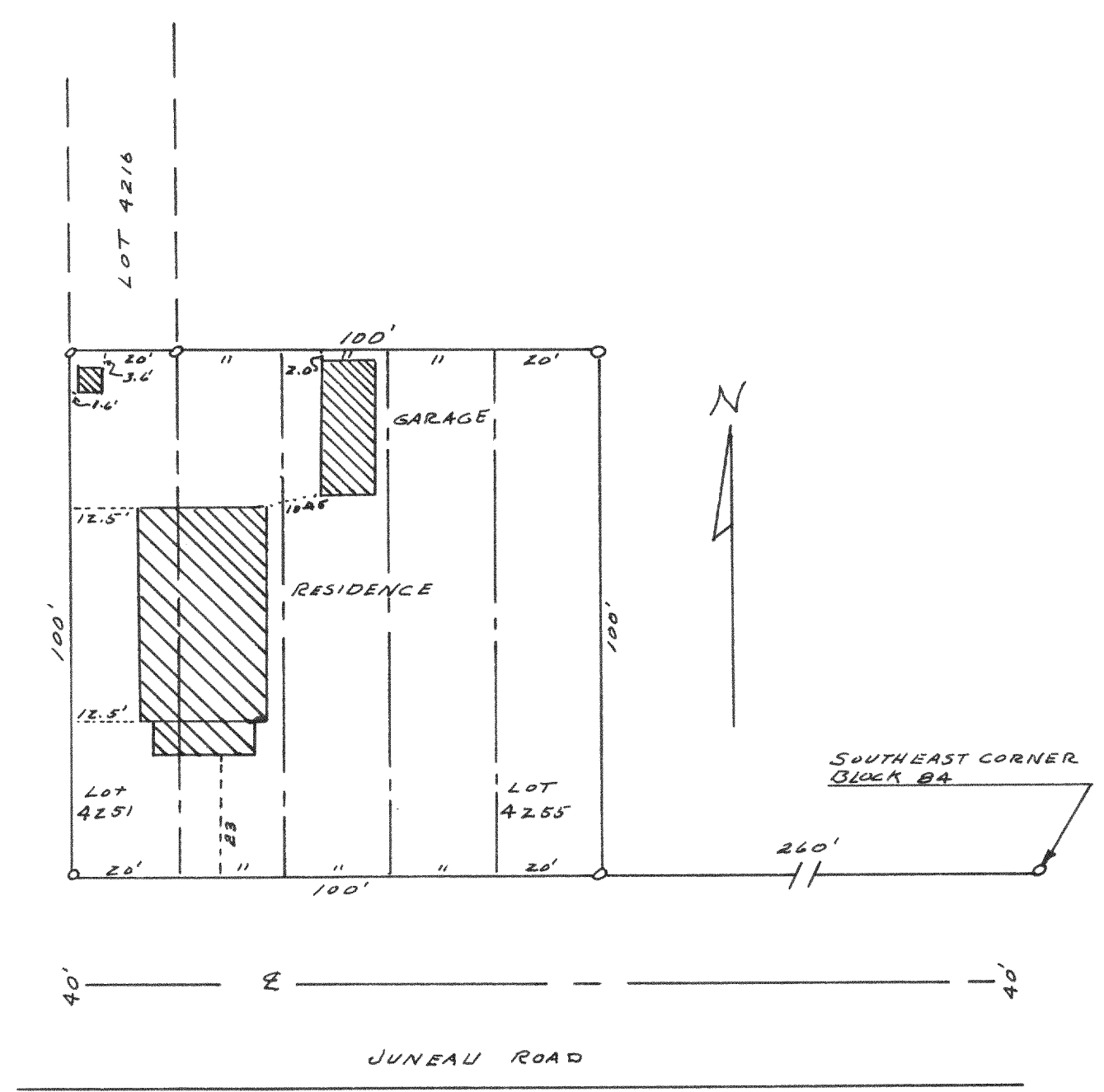


August 1962

Lloyd S. Jensen  
County Surveyor

# 4044

PLAT OF SURVEY OF  
Lots 4251 to 4255 of Section 3 of  
Pell Lake Subdivision, Walworth County,  
WISCONSIN



August 1962

Lloyd S. Jensen  
County Surveyor