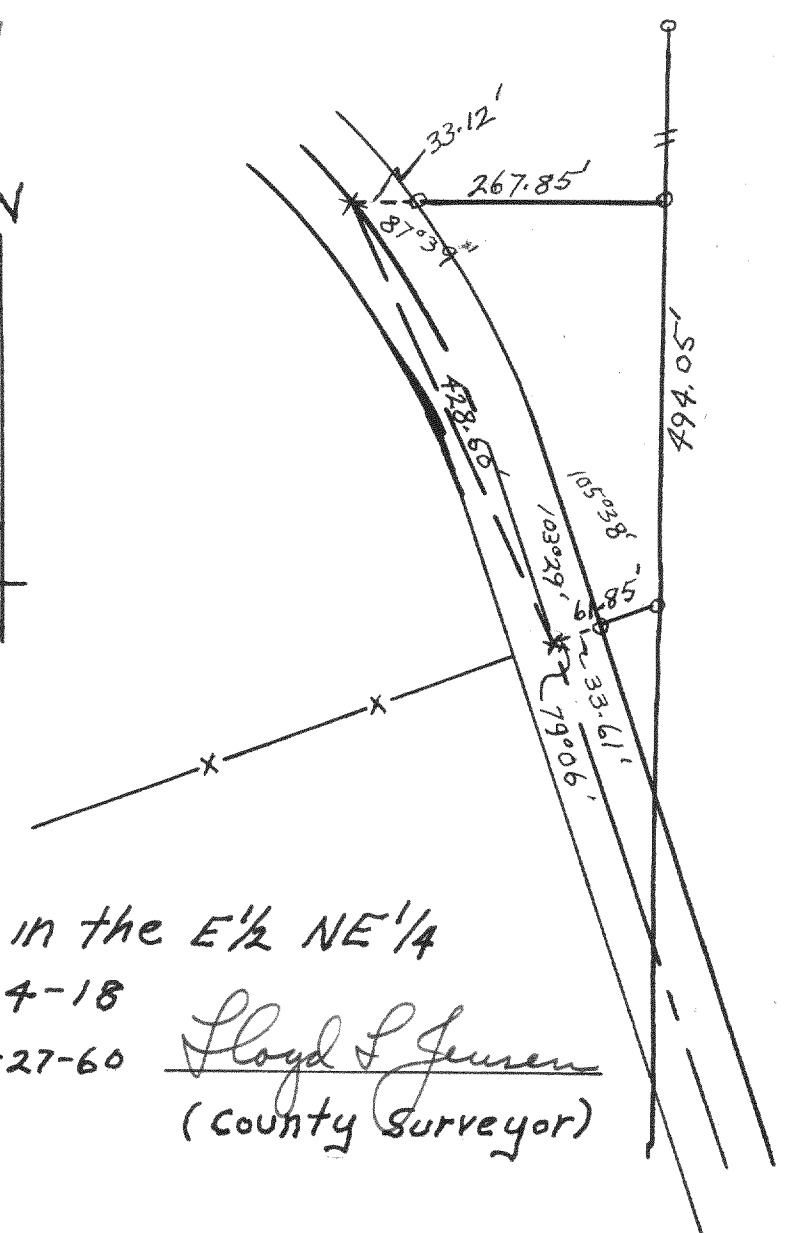
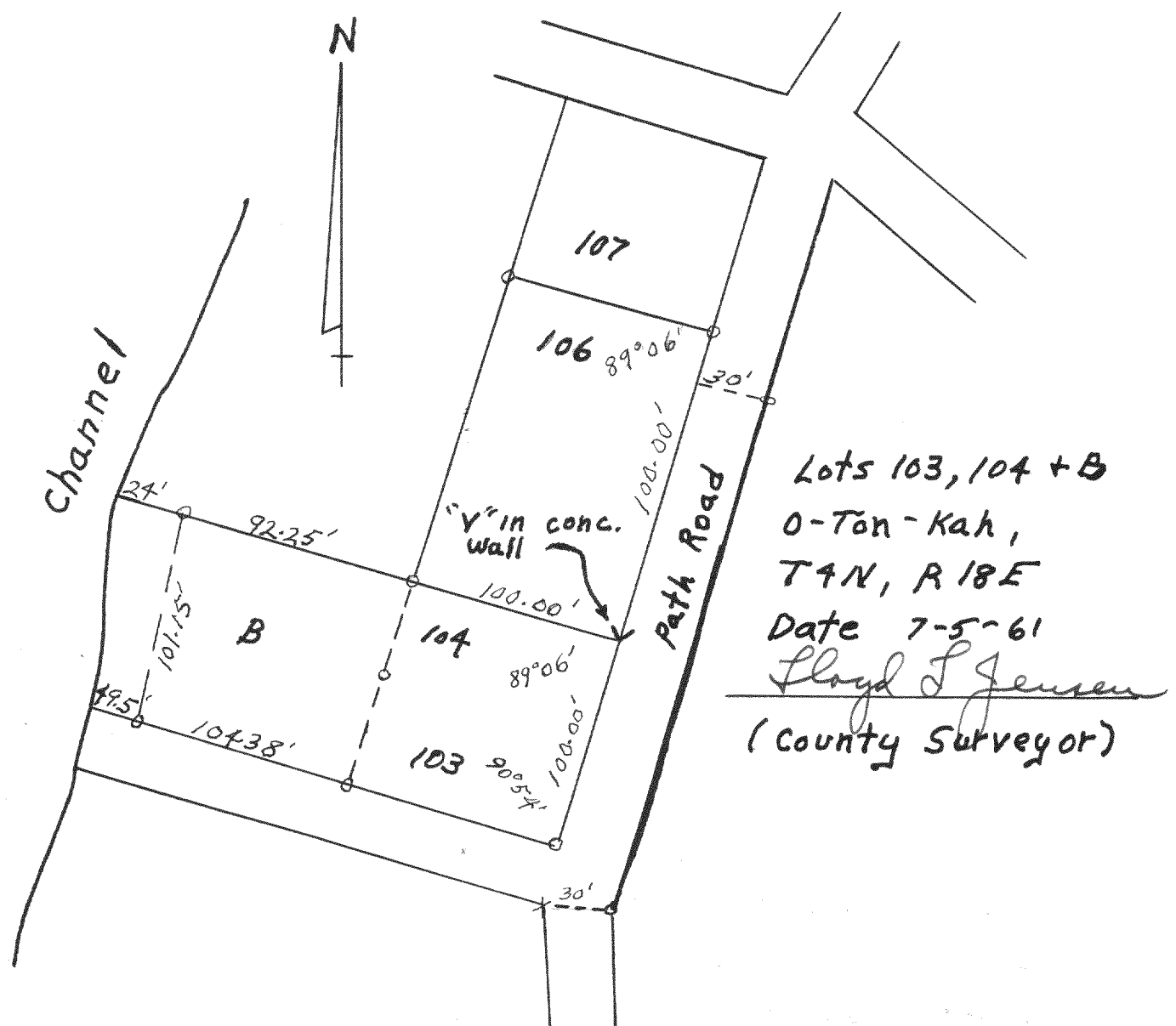


4031



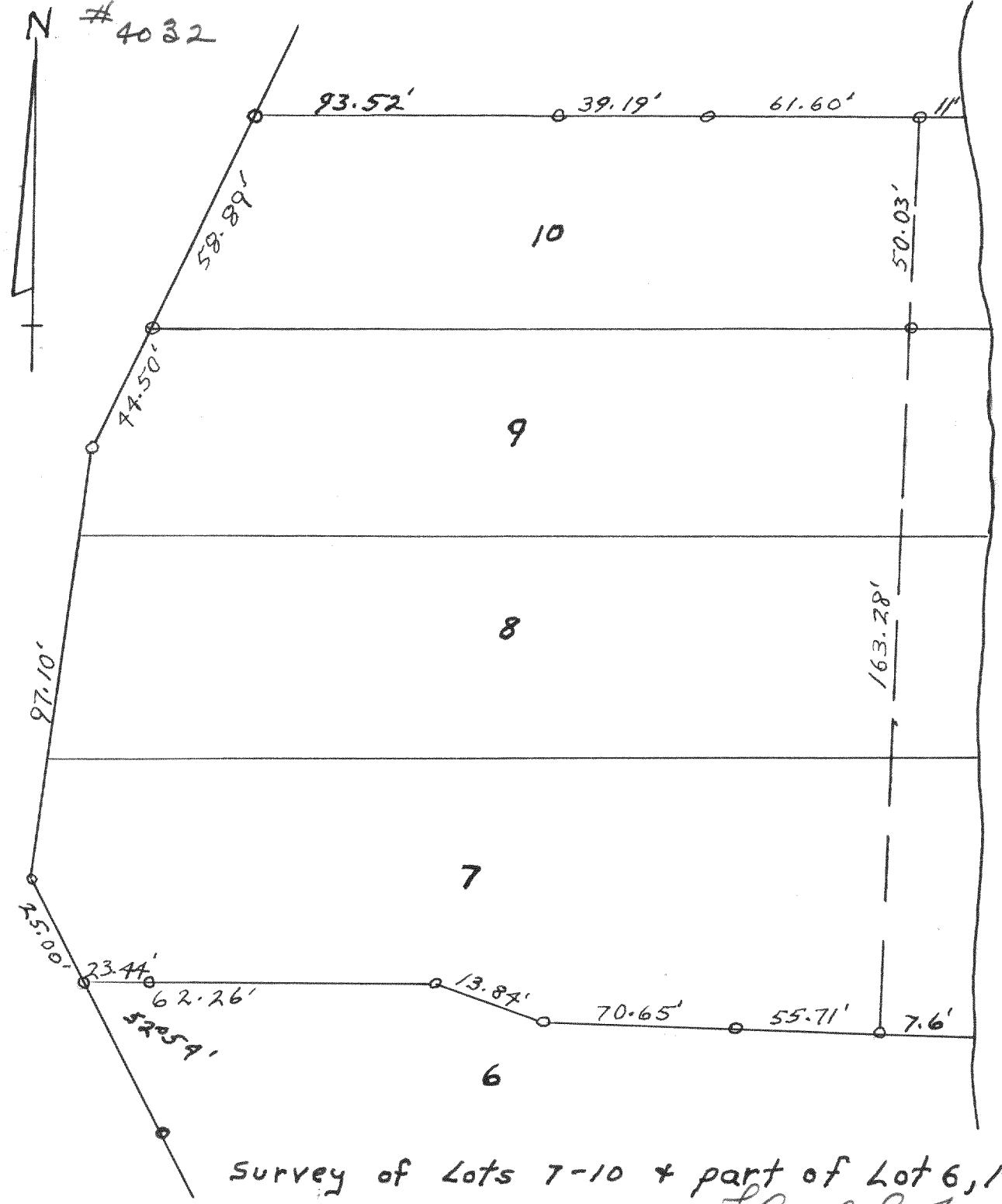
Survey in the E½ NE¼
 Sec 1-4-18
 Date 6-27-60 Lloyd S. Jensen
 (County Surveyor)

4033



Lots 103, 104 + B
 0-Ton-Kah,
 T4N, R18E
 Date 7-5-61
Lloyd S. Jensen
 (County Surveyor)

4032



Survey of Lots 7-10 + part of Lot 6, Millsite Subd.
 T4N, R18E.
 Date 8-23-61
Lloyd S. Jensen
 (County Surveyor)

Beulah Lake