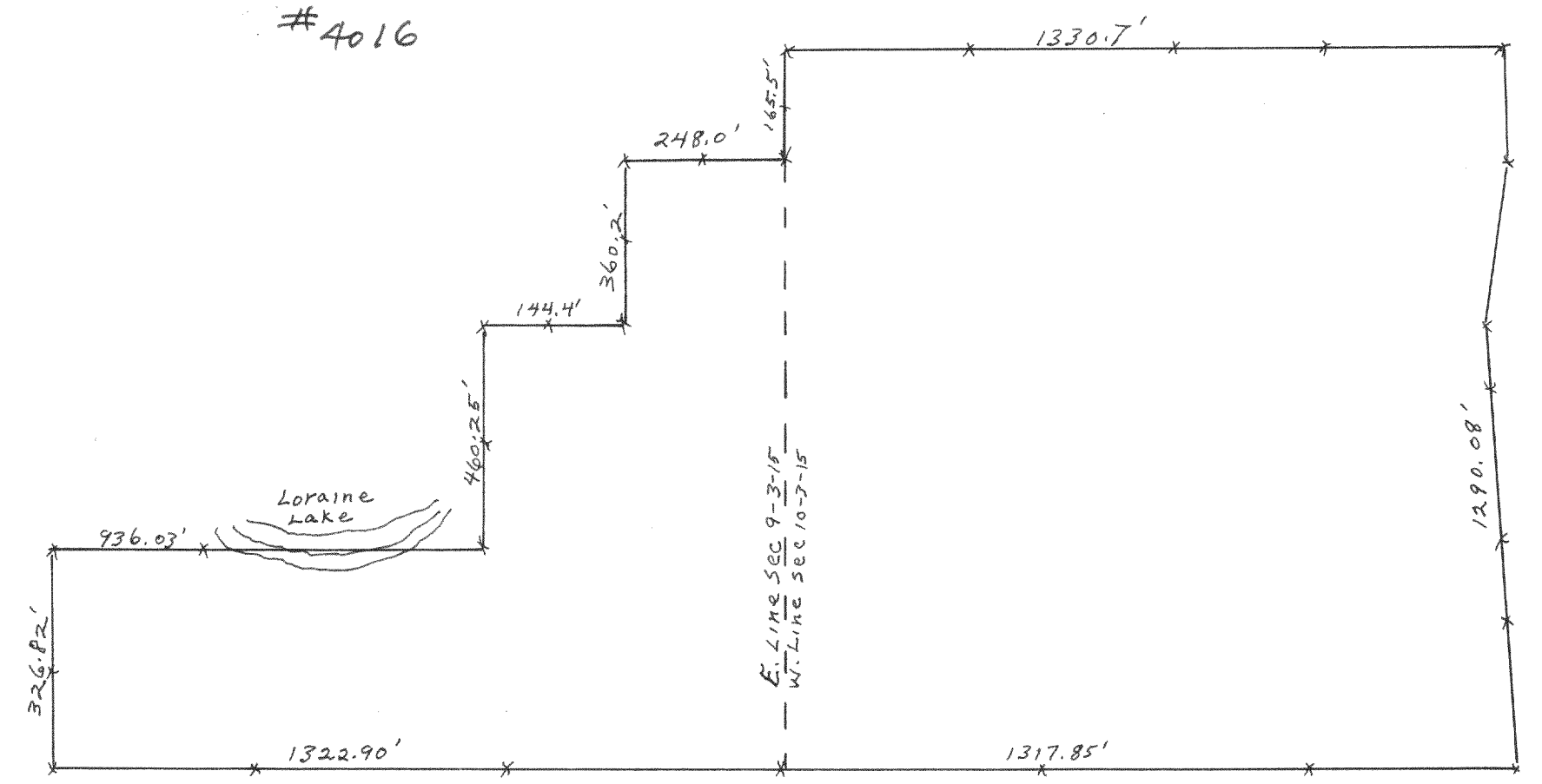


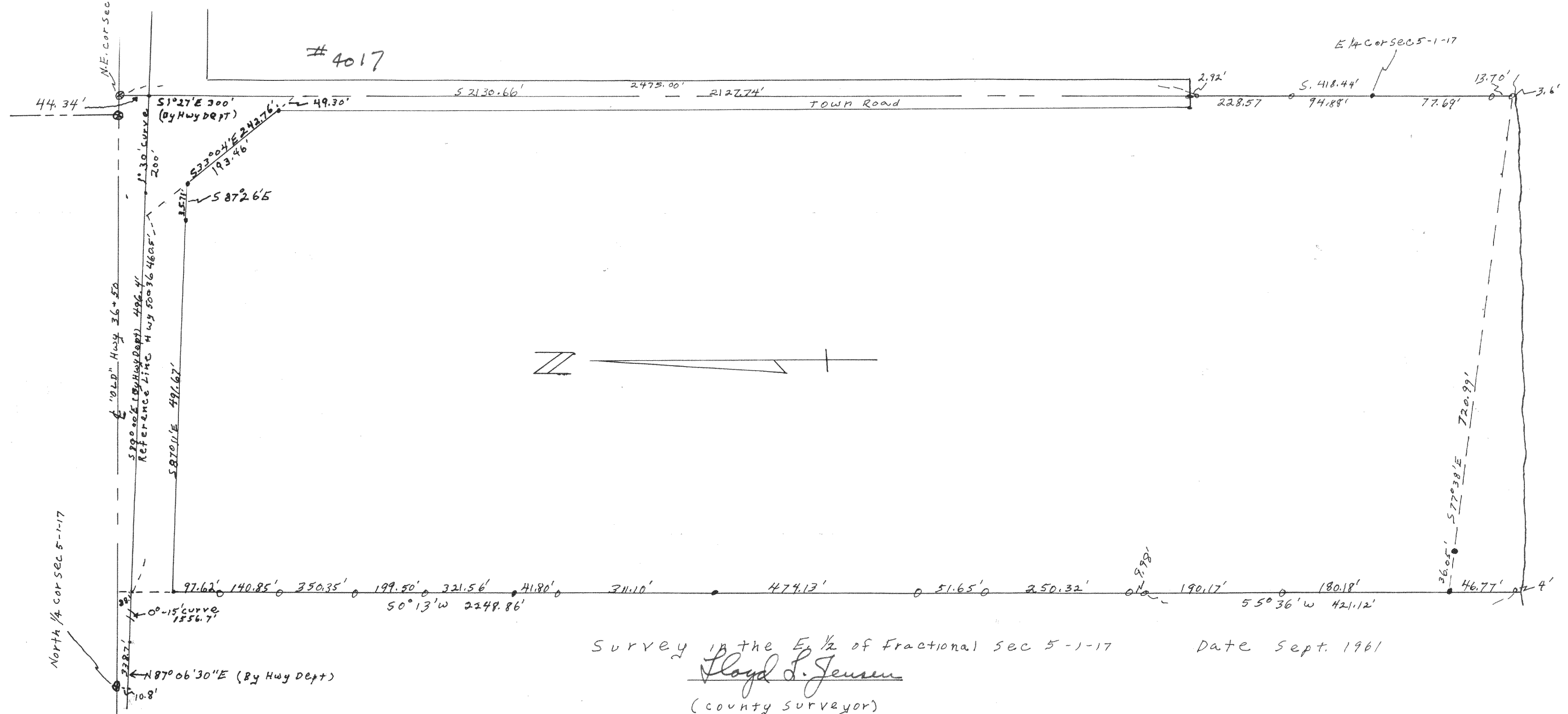
#4016



Survey in the NE 1/4 sec 9-3-15
 and the NW 1/4 sec 10-3-15 (as fenced)
 Lloyd Jensen
 (county surveyor) Date Dec. 1961



#4017



Survey in the E 1/2 of Fractional sec 5-1-17
 Lloyd Jensen
 (county surveyor) Date Sept. 1961