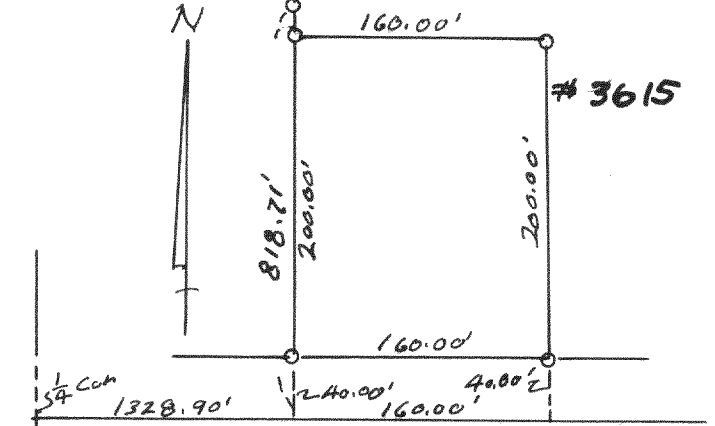
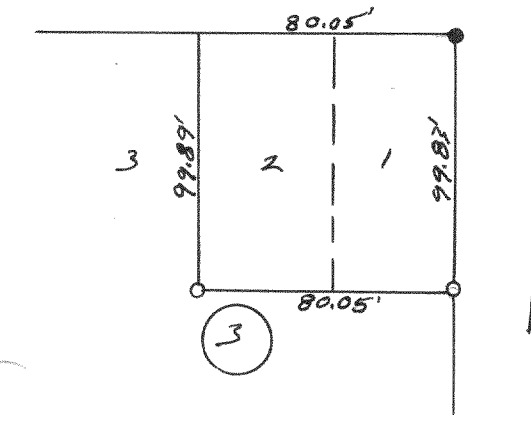


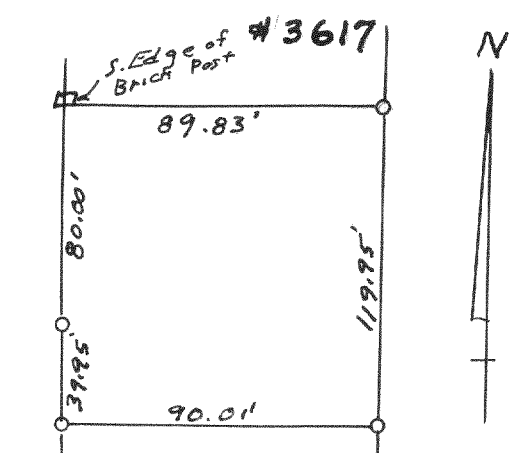
Survey of Lot 7 & N 20' of Lot 8, Blk 26, Orig. Plat of the City of Elkhorn Sept. 1958 Lloyd L Jensen County Surveyor



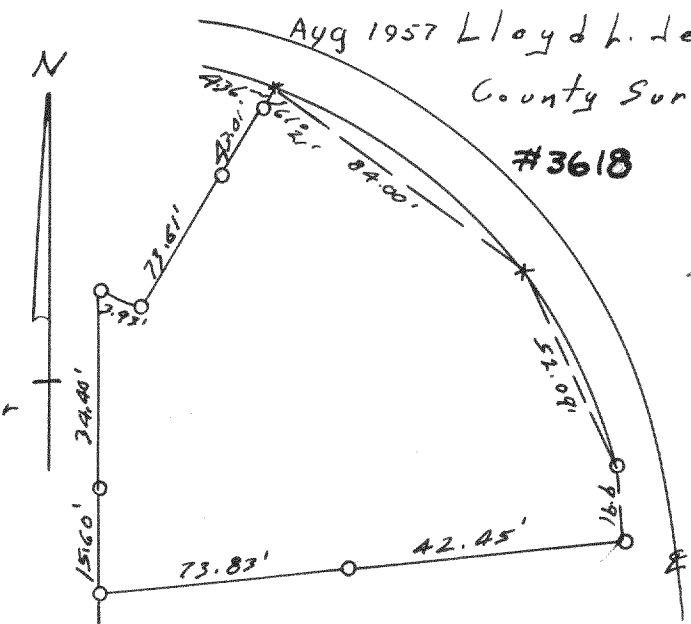
Survey of part of 06 39, Village of Fontana-on-Geneva-Lake March, 1957 Lloyd L Jensen County Surveyor



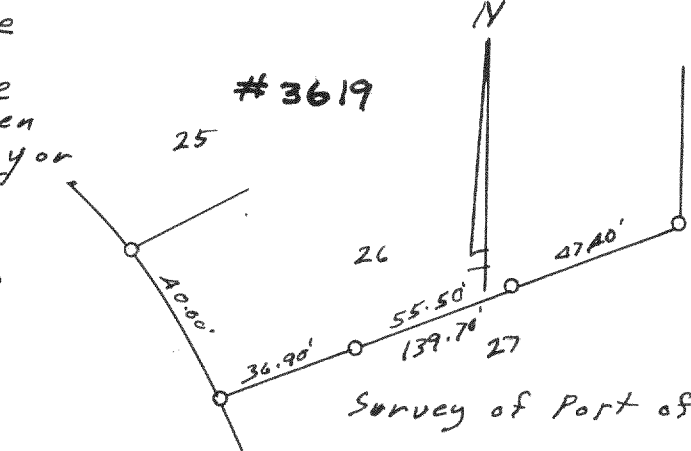
Survey of Lots 1 & 2, Blk 3 Reids Add to Reids Park Village of Fontana-on Geneva Lake May 1957 Lloyd L Jensen County Surveyor



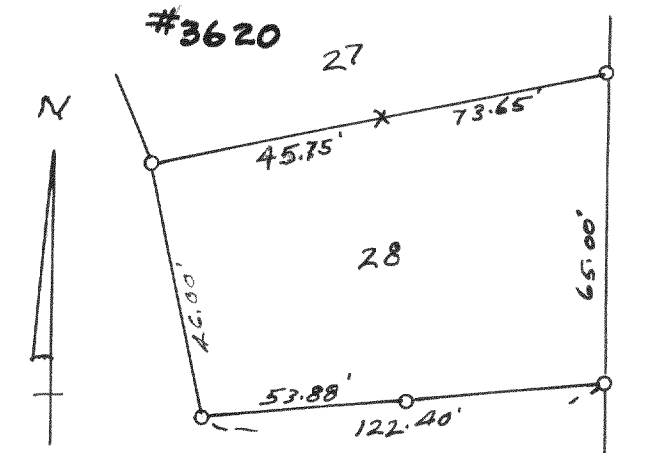
Survey of Lots 11-13, Blk 1. Glenwood Springs, Village of Fontana-on Geneva-Lake



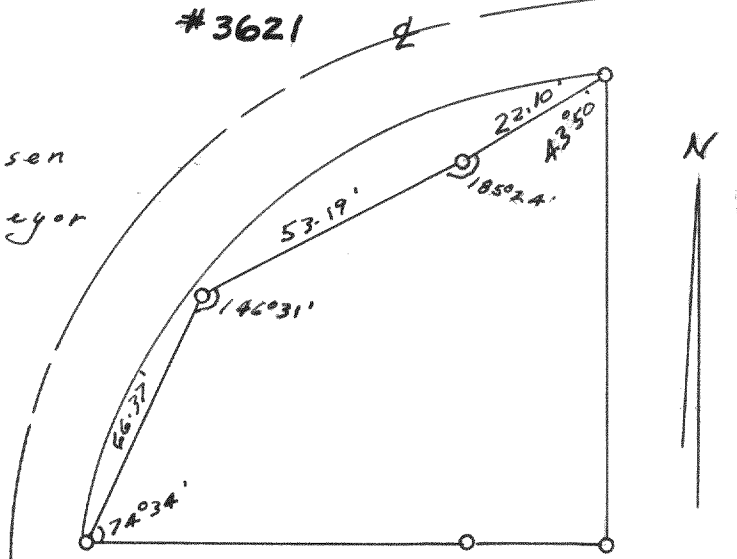
Survey of Lot 22 & part of Lots 21 & 23, Blk 2, Indian Hills, Village of Fontana-on-Geneva Lake Oct 1957 Lloyd L Jensen County Surveyor



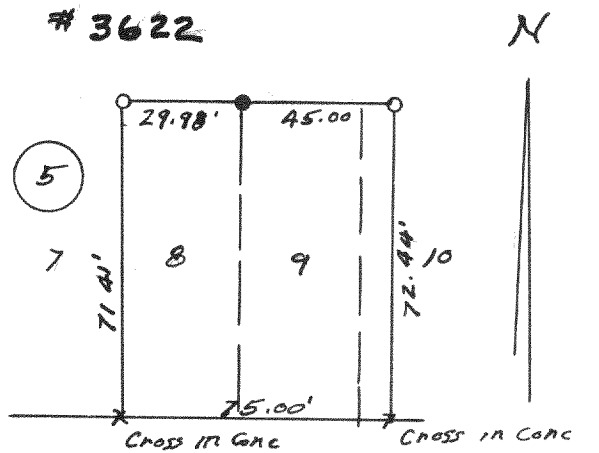
Survey of Part of Lot 26, Indian Hills, Village of Fontana-on-Geneva-Lake Oct 1957 Lloyd L Jensen County Surveyor



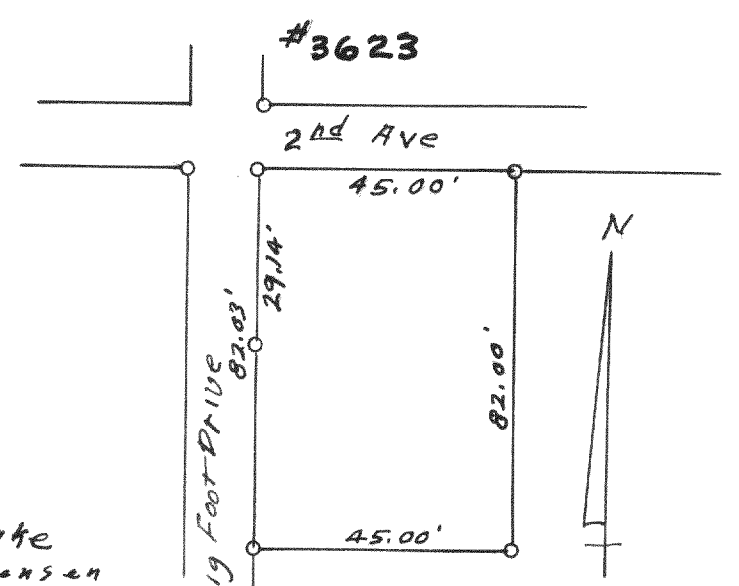
Survey of Lot 28, Indian Hills, Village of Fontana-on-Geneva-Lake Oct 1957 Lloyd L Jensen County Surveyor



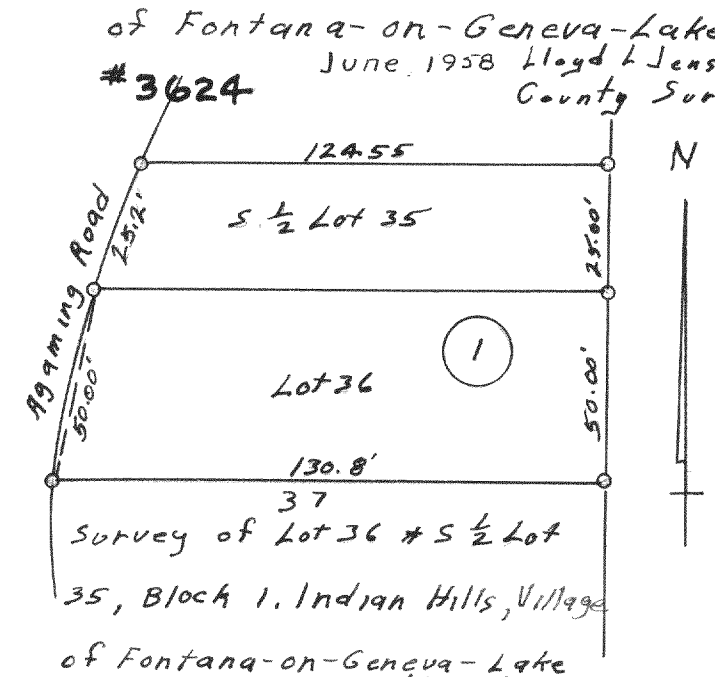
Survey of Part of Lots 1 & 24, Blk 2, Indian Hills, Village of Fontana-on-Geneva-Lake April 1958 Lloyd L Jensen County Surveyor



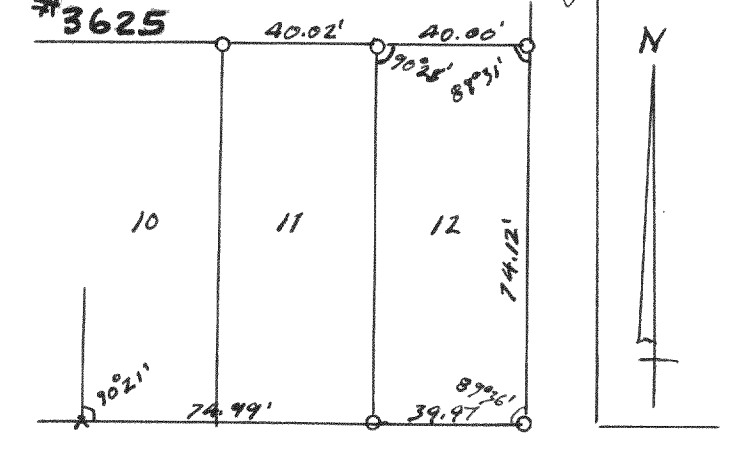
Survey of Lots 8, 9 & N 5' of Lot 10, Blk 5 P.A. Reids Add to Village of Fontana-on-Geneva-Lake June 1958 Lloyd L Jensen County Surveyor



Survey in Blk 5, D.A. Reids Add, Village of Fontana-on-Geneva-Lake June 1958 Lloyd L Jensen County Surveyor

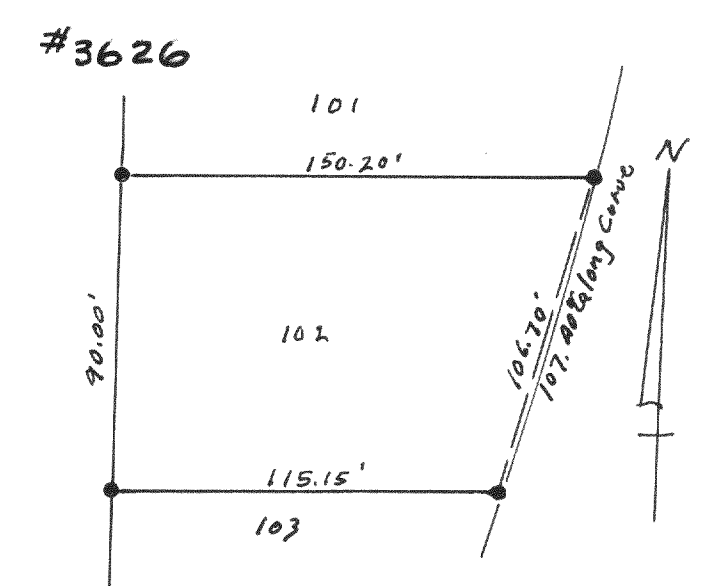


Survey of Lot 36 & S 1/2 Lot 35, Block 1, Indian Hills, Village of Fontana-on-Geneva-Lake June, 1958 Lloyd L Jensen County Surveyor

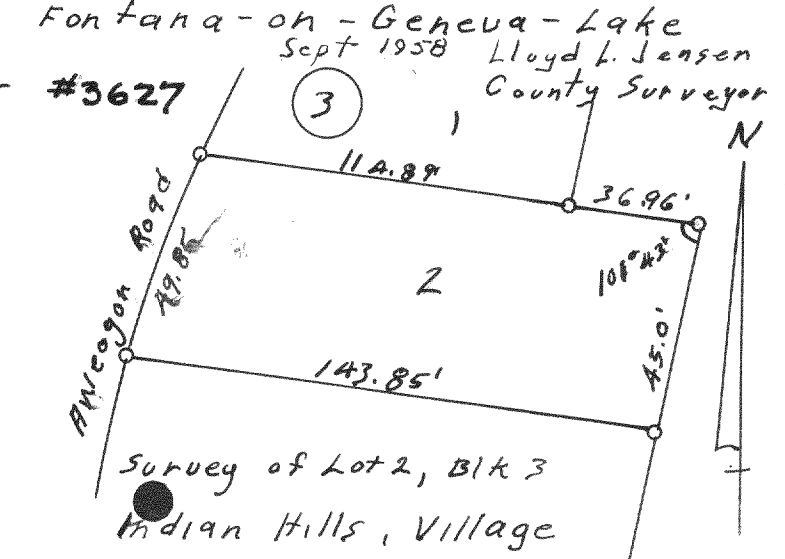


Survey of Lot 11 & 12 Blk 5, P.A. Reids Add, Village of Fontana-on-Geneva-Lake

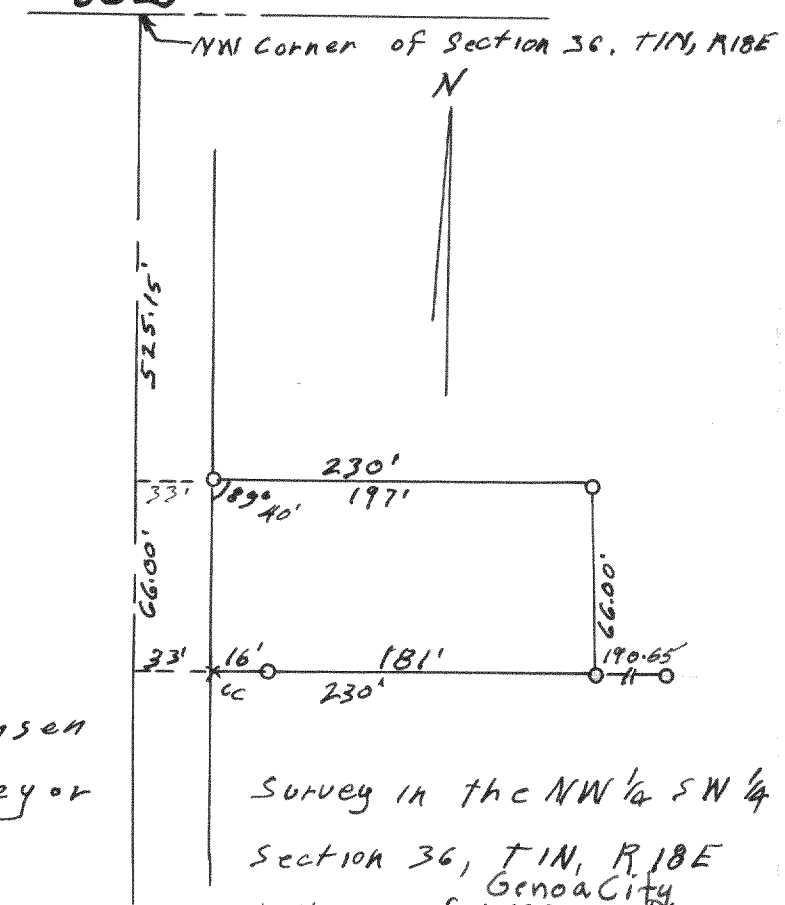
Aug 1958 Lloyd L Jensen County Surveyor



Survey of Lot 102, Unit 2, Country Club Estates, Village of Fontana-on-Geneva-Lake



Survey of Lot 2, Blk 3 Indian Hills, Village of Fontana-on-Geneva-Lake Oct 1958 Lloyd L Jensen County Surveyor



Survey in the NW 1/4 SW 1/4 Section 36, T1N, R18E Geneva City Village of Fontana-on-Geneva-Lake Lloyd L Jensen County Surveyor