

East West 1/4 Section  
Line of Fractional  
Section 13, T1N, R1E.

East 1/4 Section Corner  
of Fractional Section 13  
T1N, R1E.

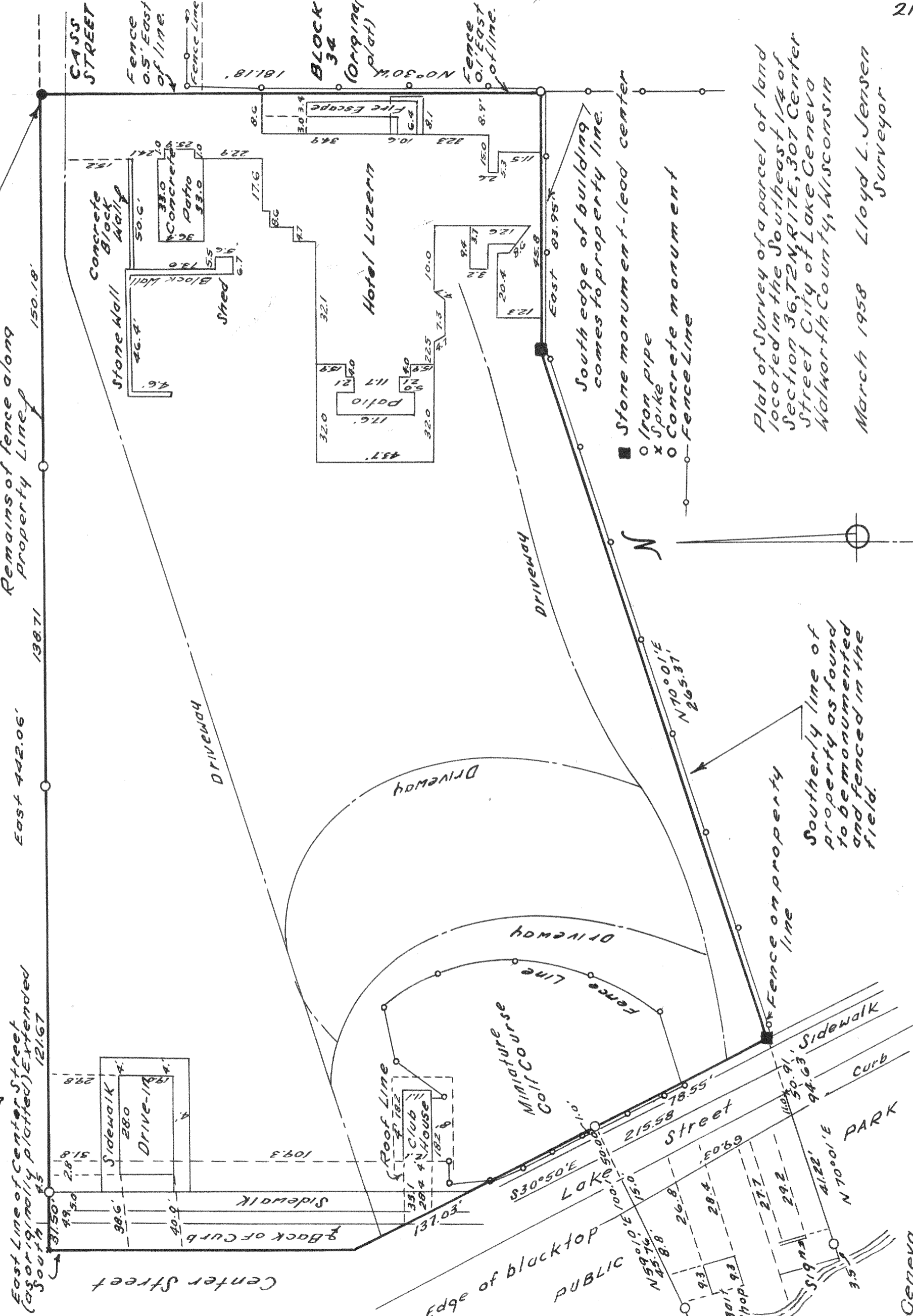
Parcel of land located in the N 1/2 of Fractional  
Section 13, T1N, R1E Village of Fontana on Geneva  
Lake, Walworth County, Wisconsin.

March, 1957  
July, 1958

Lloyd L. Jensen  
Surveyor

- Iron pipe
- Concrete monument

Southwest corner of  
Block 33 of the original  
Plot of the City of  
Lake Geneva.



Remains of fence along  
Property Line

East 442.06'

East Line of Center Street  
(formerly platted) Extended  
South 121.67'

Southerly line of  
property as found  
to be monumented  
and fenced in the  
field.

Fence on property  
line

DRIVEWAY

DRIVEWAY

DRIVEWAY

DRIVEWAY

DRIVEWAY

DRIVEWAY

DRIVEWAY

DRIVEWAY

DRIVEWAY

DRIVEWAY

DRIVEWAY

DRIVEWAY

DRIVEWAY

DRIVEWAY

Plat of Survey of a parcel of land  
located in the Southeast 1/4 of  
Section 36, T2N, R17E, 307 Center  
Street City of Lake Geneva  
Walworth County, Wisconsin  
March 1958 Lloyd L. Jensen  
Surveyor

Stone monument-lead center

South edge of building  
comes to property line.

Stone monument

Iron pipe  
x Spike  
o Concrete monument

Fence on line

DRIVEWAY

DRIVEWAY

DRIVEWAY

DRIVEWAY

DRIVEWAY

DRIVEWAY

DRIVEWAY

DRIVEWAY

DRIVEWAY