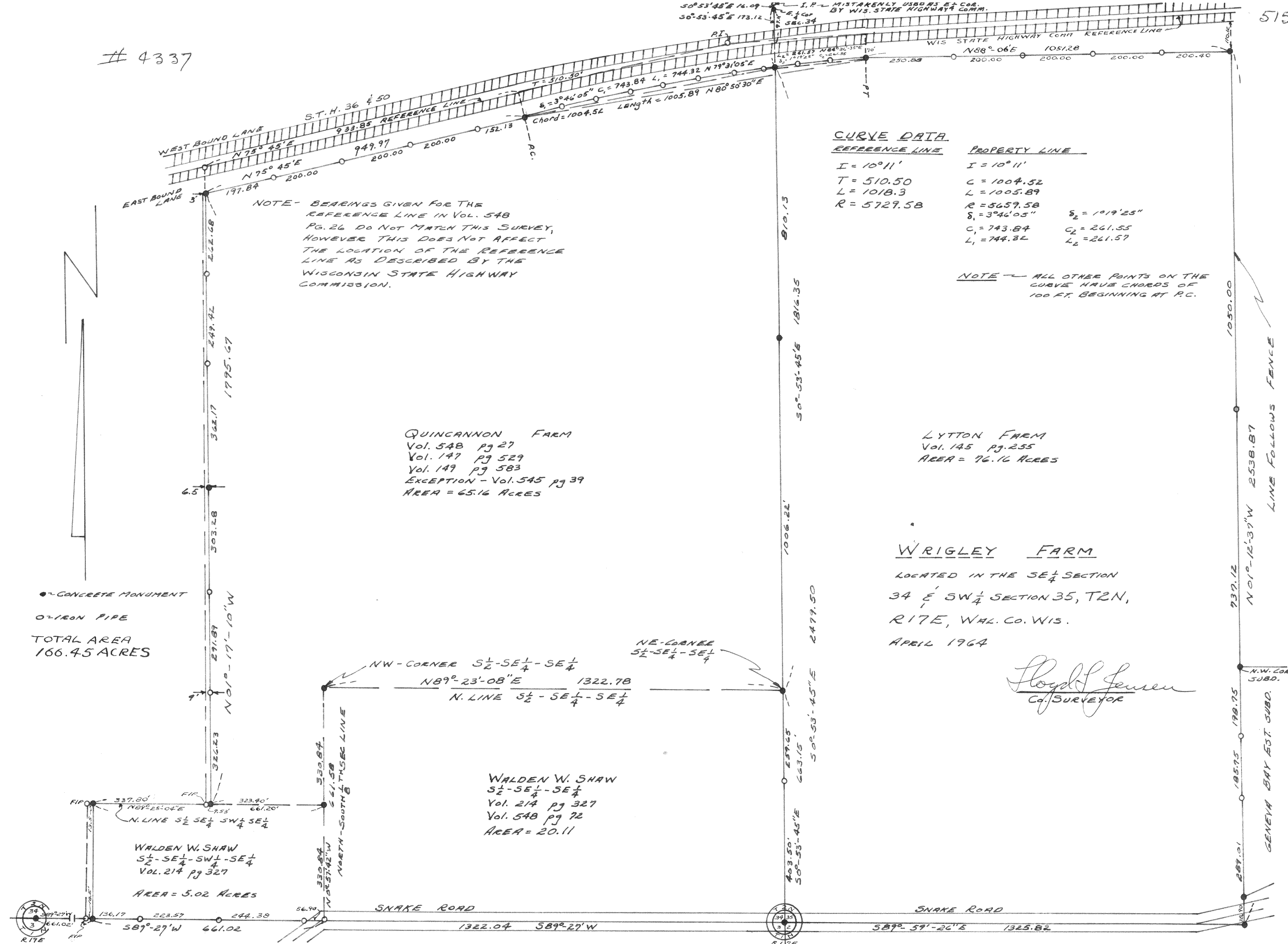


4337



NOTE - BEARINGS GIVEN FOR THE REFERENCE LINE IN VOL. 548 PG. 26 DO NOT MATCH THIS SURVEY, HOWEVER THIS DOES NOT AFFECT THE LOCATION OF THE REFERENCE LINE AS DESCRIBED BY THE WISCONSIN STATE HIGHWAY COMMISSION.

CURVE DATA

REFERENCE LINE	PROPERTY LINE
I = 10°11'	I = 10°11'
T = 510.50	C = 1004.52
L = 1018.3	L = 1005.89
R = 5729.58	R = 5659.58
	δ ₁ = 3°46'05"
	δ ₂ = 1°19'25"
	C ₁ = 743.84
	C ₂ = 261.55
	L ₁ = 744.32
	L ₂ = 261.57

NOTE - ALL OTHER POINTS ON THE CURVE HAVE CHORDS OF 100 FT. BEGINNING AT P.C.

QUINCANNON FARM
 Vol. 548 pg 27
 Vol. 147 pg 529
 Vol. 149 pg 583
 EXCEPTION - Vol. 545 pg 39
 AREA = 65.16 ACRES

LYTTON FARM
 Vol. 145 pg. 255
 AREA = 76.16 ACRES

WRIGLEY FARM
 LOCATED IN THE SE 1/4 SECTION
 34 E SW 1/4 SECTION 35, T2N,
 R17E, WAH. CO. WIS.
 APRIL 1964

Lloyd Jensen
 Co. SURVEYOR

● CONCRETE MONUMENT
 ○ IRON PIPE
 TOTAL AREA
 166.45 ACRES

WALDEN W. SHAW
 SE 1/4 - SE 1/4 - SE 1/4
 Vol. 214 pg 327
 Vol. 548 pg 72
 AREA = 20.11

WALDEN W. SHAW
 SW 1/4 - SW 1/4 - SE 1/4
 Vol. 214 pg 327
 AREA = 5.02 ACRES

