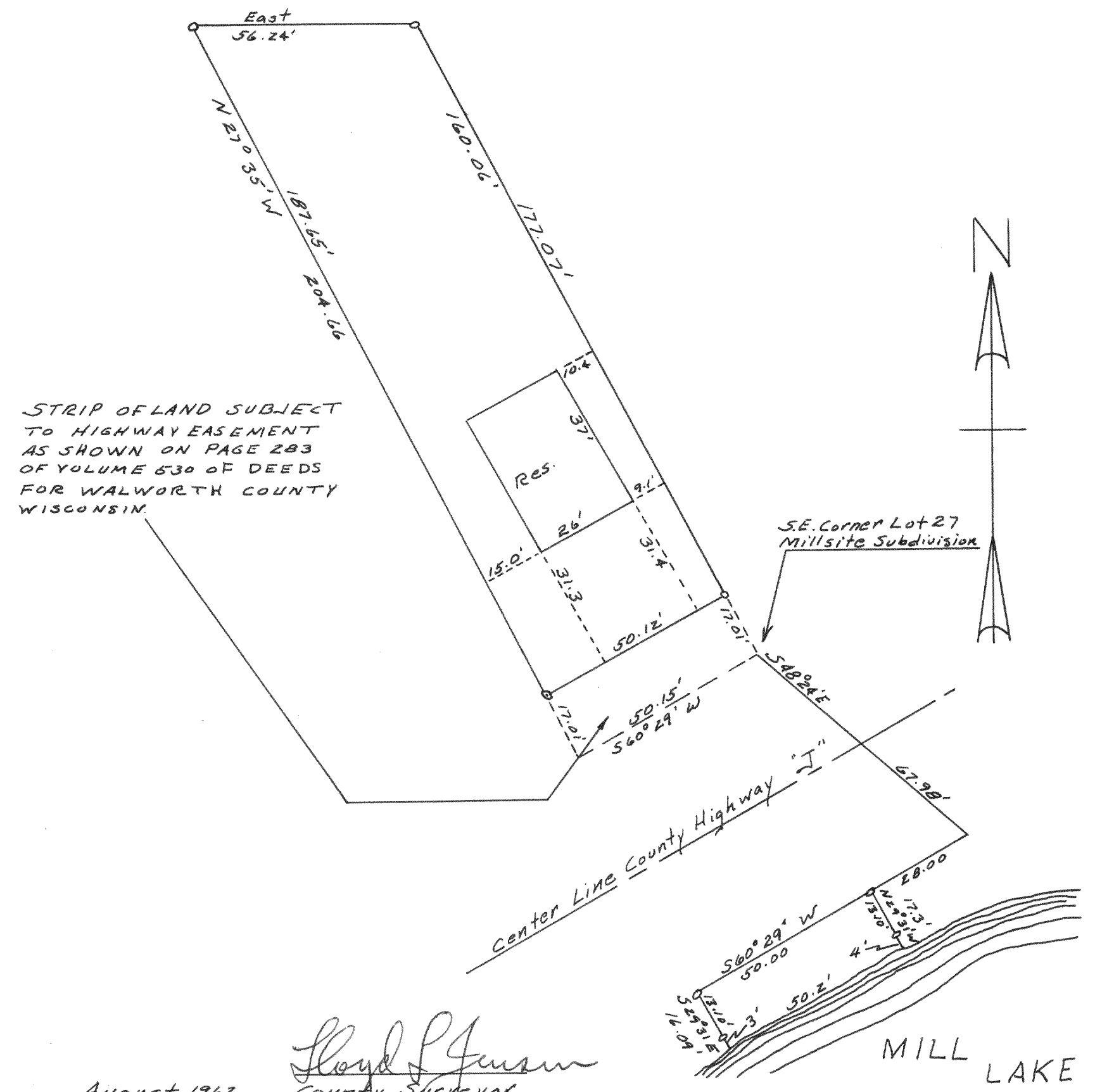


# 4043

PLAT OF SURVEY OF  
Part of Lot 27, Millsite Subdivision  
located in the Northwest 1/4 of Section 4,  
T4N, R18E, Walworth County, WISCONSIN



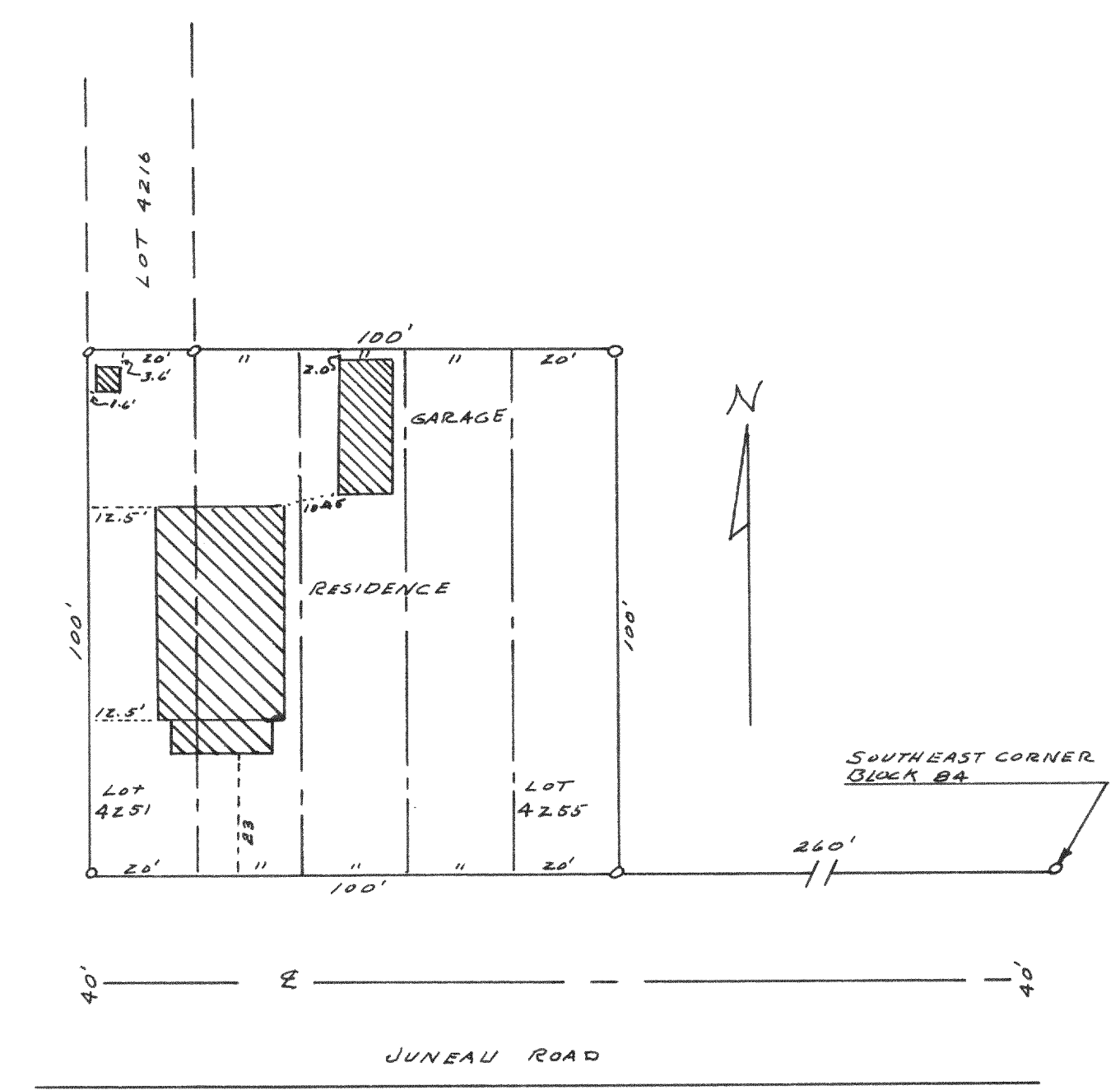
STRIP OF LAND SUBJECT TO HIGHWAY EASEMENT AS SHOWN ON PAGE 283 OF VOLUME 530 OF DEEDS FOR WALWORTH COUNTY WISCONSIN.

August 1962

Lloyd S. Jensen  
County Surveyor

# 4044

PLAT OF SURVEY OF  
Lots 4251 to 4255 of Section 3 of  
Pell Lake Subdivision, Walworth County,  
WISCONSIN



August 1962

Lloyd S. Jensen  
County Surveyor