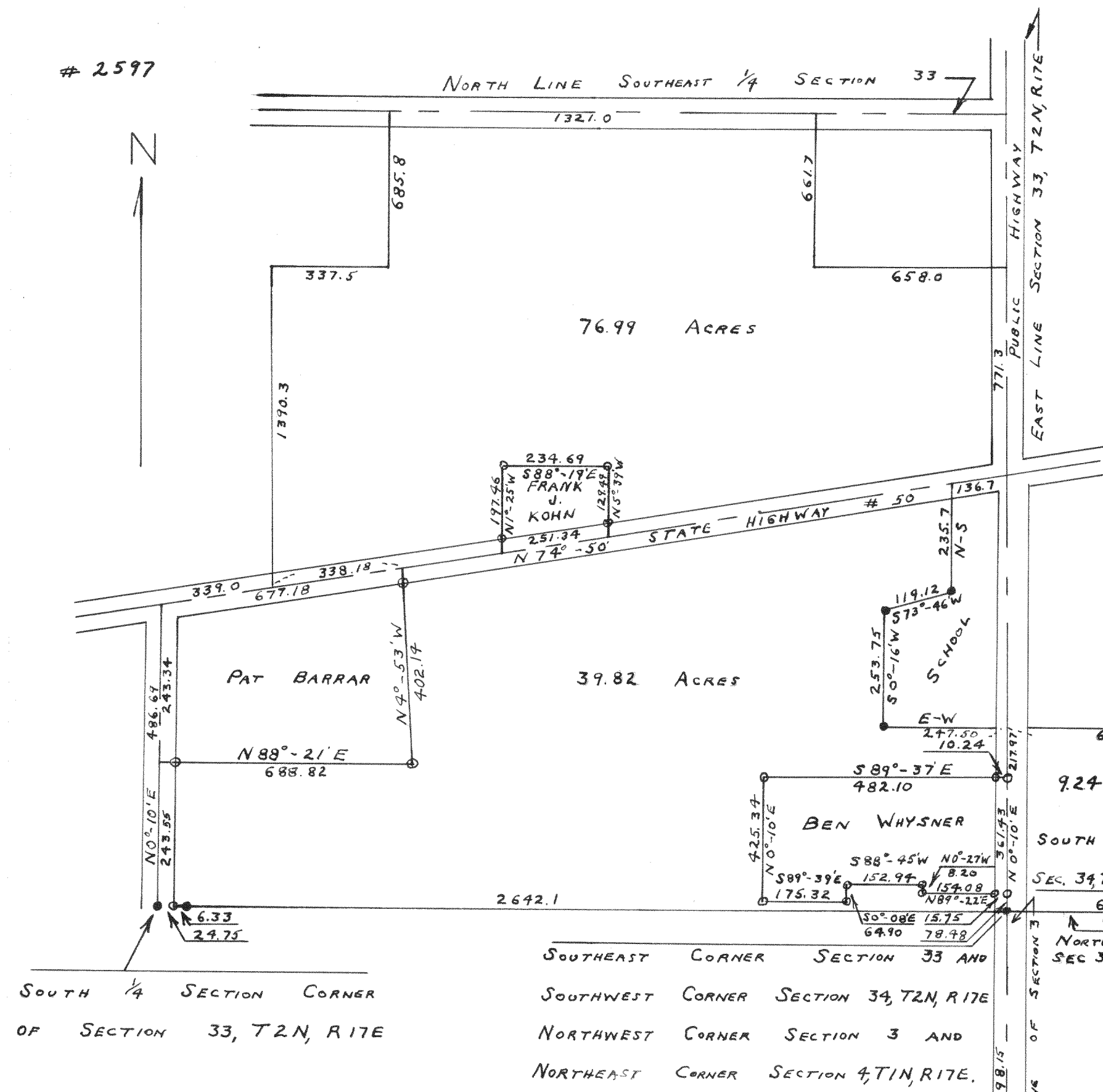


2597



SOUTH 1/4 SECTION CORNER
OF SECTION 33, T2N, R17E

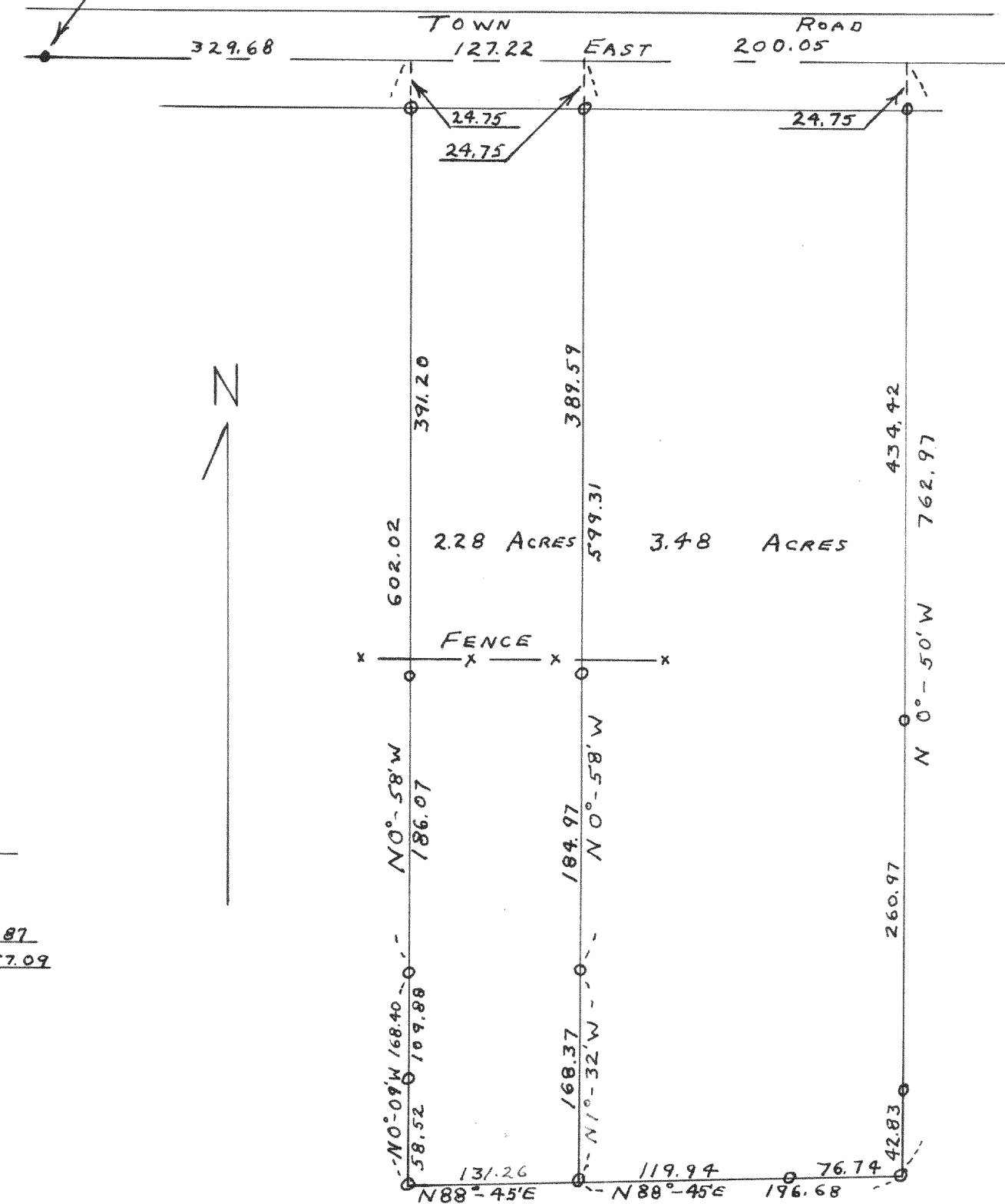
SOUTHWEST CORNER SECTION 34, T2N, R17E
NORTHWEST CORNER SECTION 3 AND
NORTHEAST CORNER SECTION 4, T1N, R17E.

PLAT OF SURVEY OF LAND IN SECTIONS
33 AND 34, T2N, R17E AND IN SECTION
3, T1N, R17E WALWORTH COUNTY, WISCONSIN.

Lloyd L. Jensen SA
COUNTY SURVEYOR

2598

WEST 1/64 TH CORNER OF NW 1/4
OF NW 1/4 OF SECTION 35, T2N, R17E



SURVEY OF A PARCEL OF LAND IN
THE SOUTHWEST 1/4 OF THE NORTHWEST 1/4
OF THE NORTHWEST 1/4 AND IN THE
WEST 1/2 OF THE SOUTHWEST 1/4 OF
THE NORTHWEST 1/4 OF SECTION 35,
T2N, R17E OF WALWORTH COUNTY,
WISCONSIN

Lloyd L. Jensen SA
COUNTY SURVEYOR

EAST - WEST 1/8TH SECTION
LINE OF NW 1/4 OF
SECTION 3, T1N, R17E.