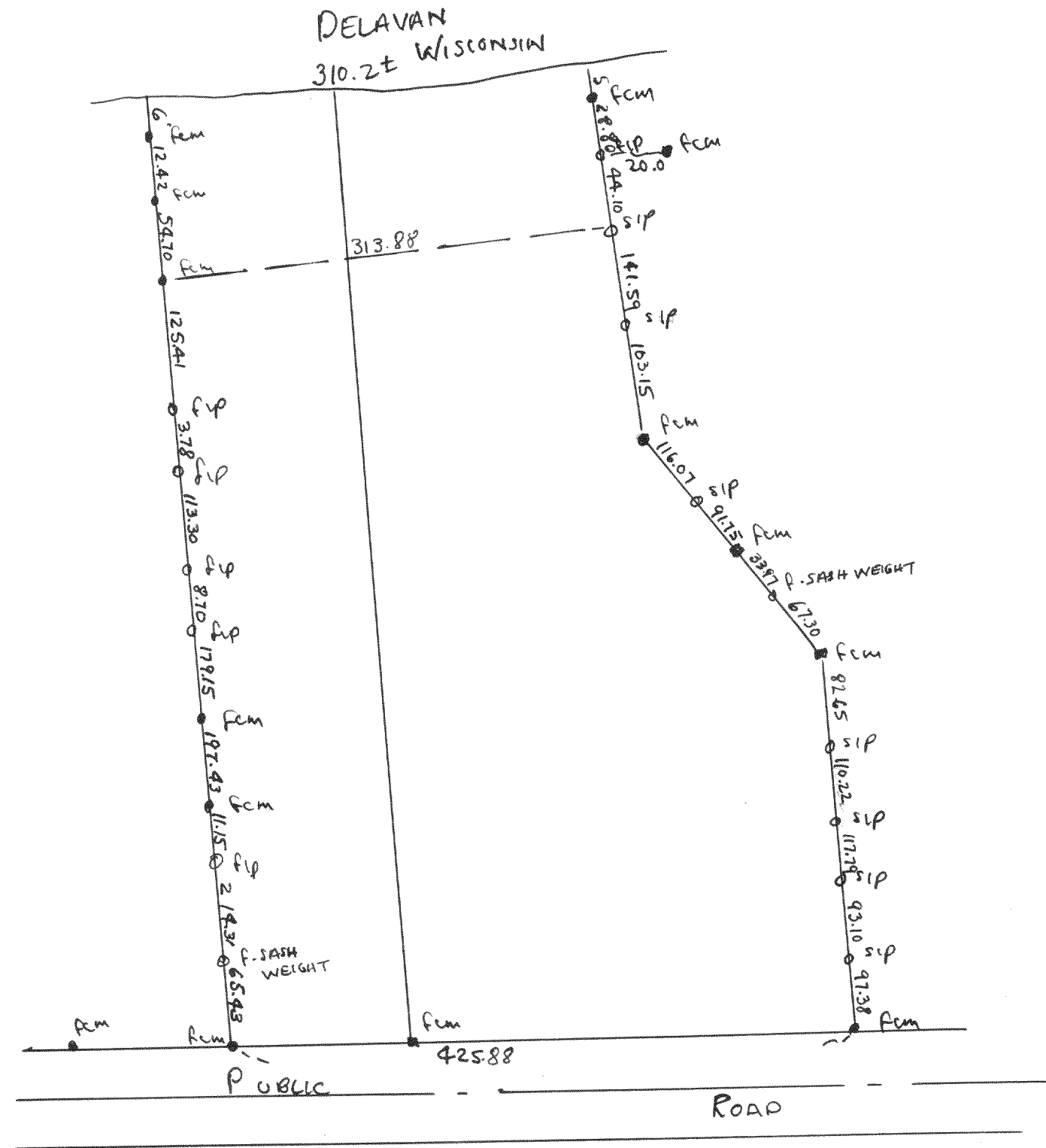
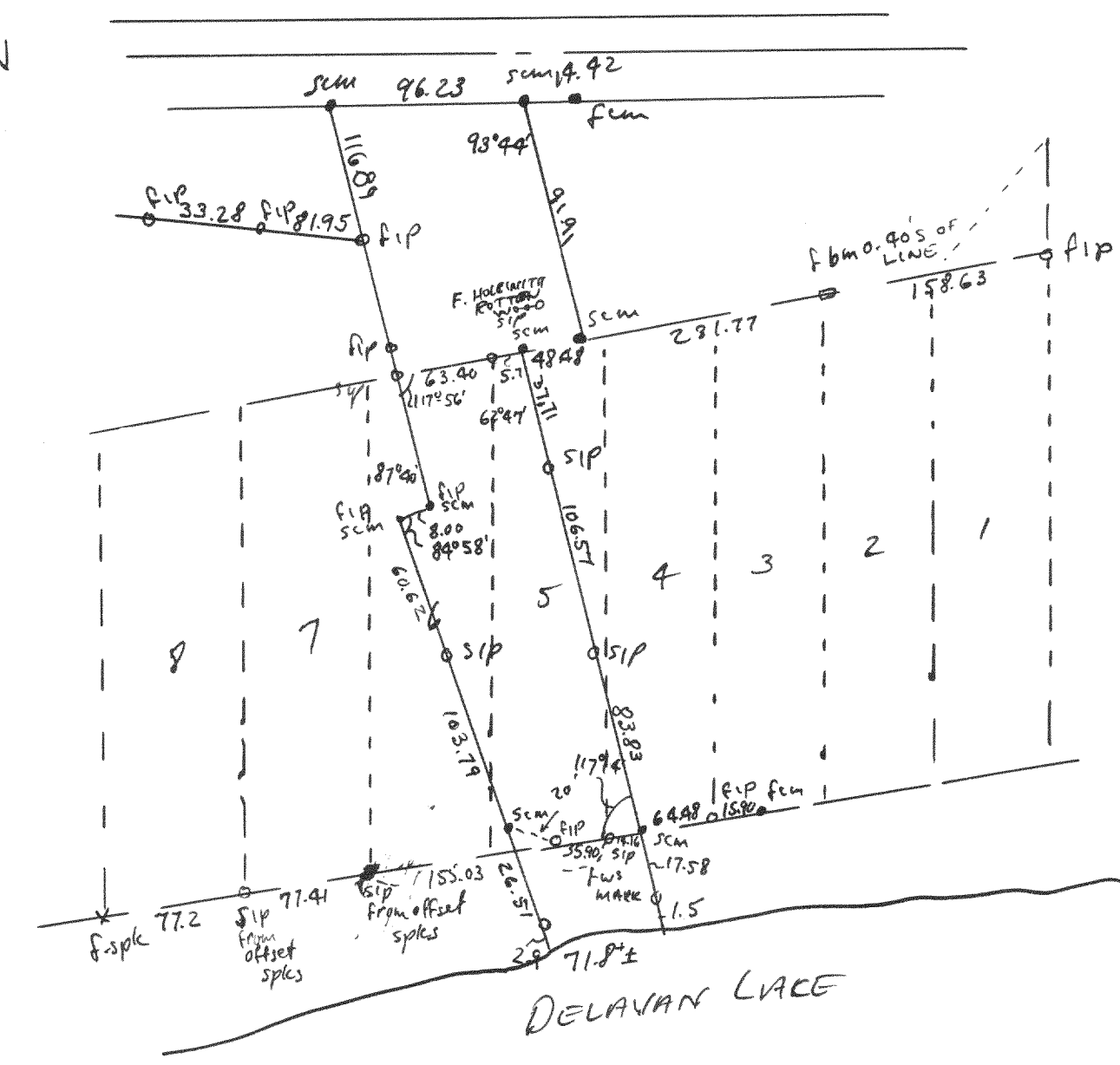


#2213



Plat of survey of a part of the W.R. Abbott Estate, being part of Abbott & Robbins Subdivision located in Section 28 & 33 T24R16E of Walworth County, Wisconsin
 Sept. 18, 1950
 Lloyd S. Jensen
 County Surveyor

2214



Plat of survey of parts of lots 4, 5, & 6 of Sidon Subdivision located in Sec 28, T24R16E
 Oct 3, 1950
 Lloyd S. Jensen
 County Surveyor