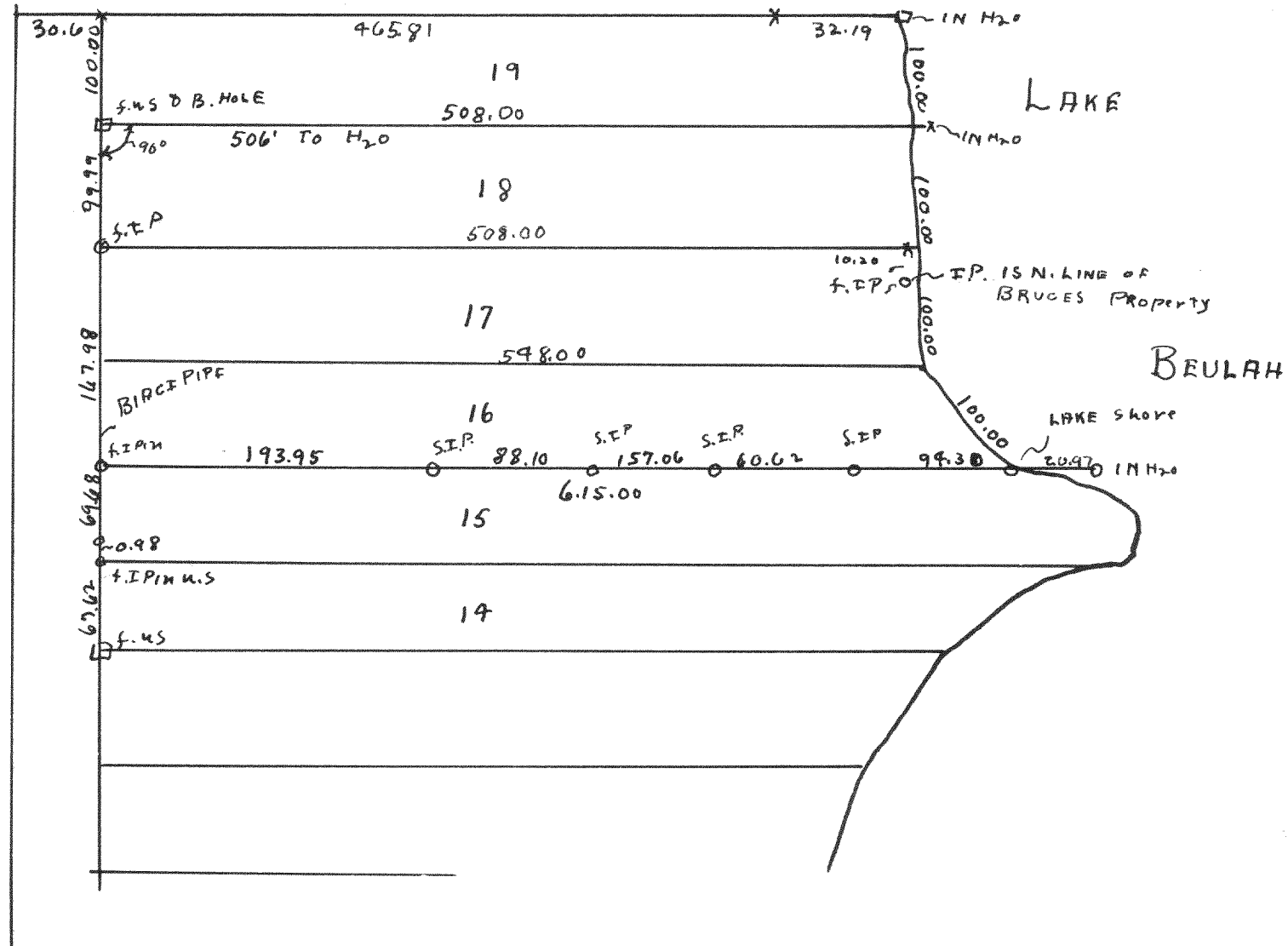


1996

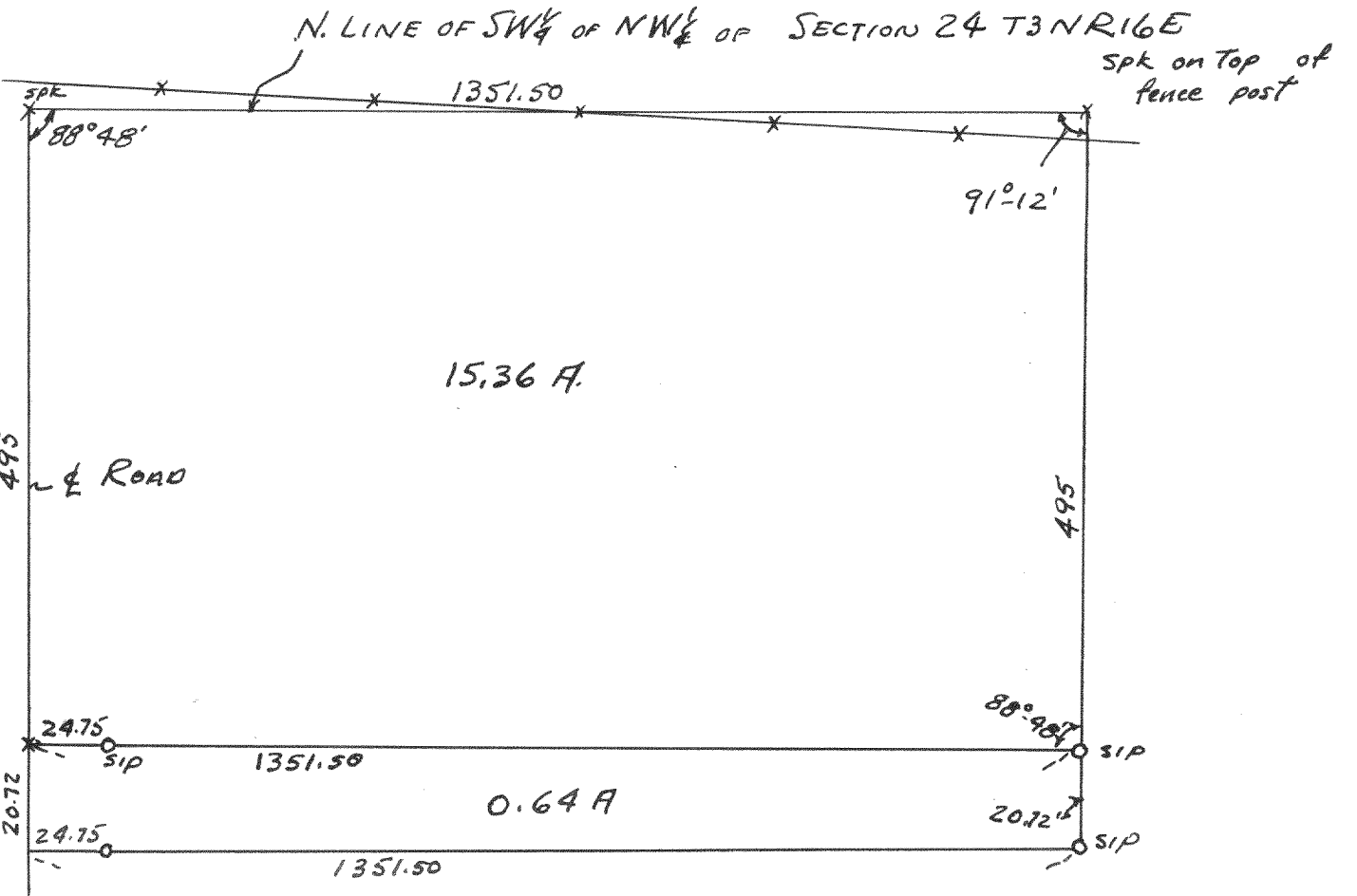


Plat of survey of the line between lots 15 & 16 of Rossmore Park at Lake Beulah T4NR18E of Walworth County Wisconsin October 20 1948
 Lloyd S Jensen
 County Surveyor
 LJS

1997

See plat of Sutzman's subdivision on file at the Register of Deeds office Elkhorn Wis 1948
 Lloyd S Jensen
 County Surveyor
 LJS

#1998



Plat of survey of a parcel of land located in the SW 1/4 of the NW 1/4 of Section 24 T3N R16E March 20, 1947
 Lloyd S Jensen
 County Surveyor
 LJS