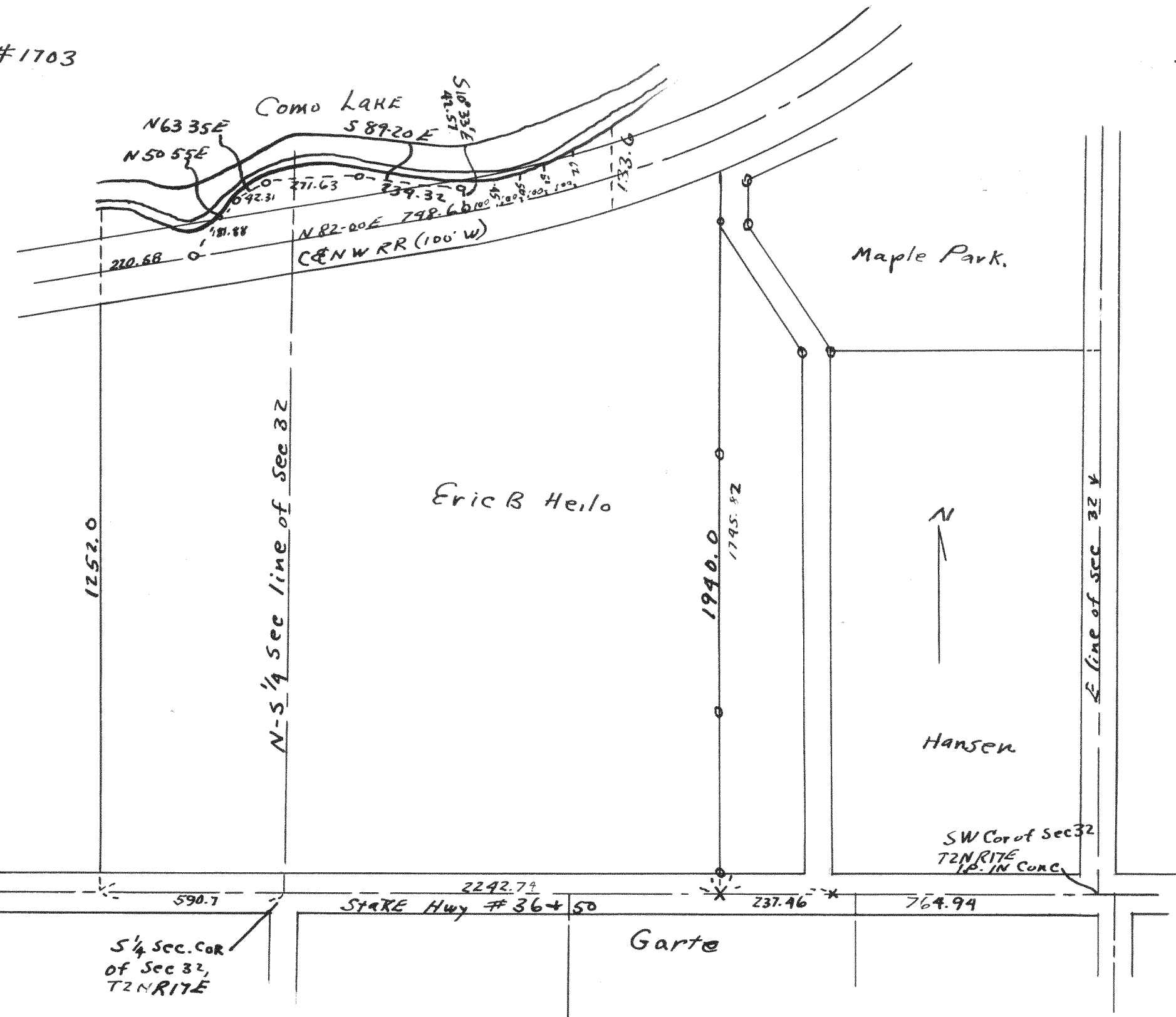
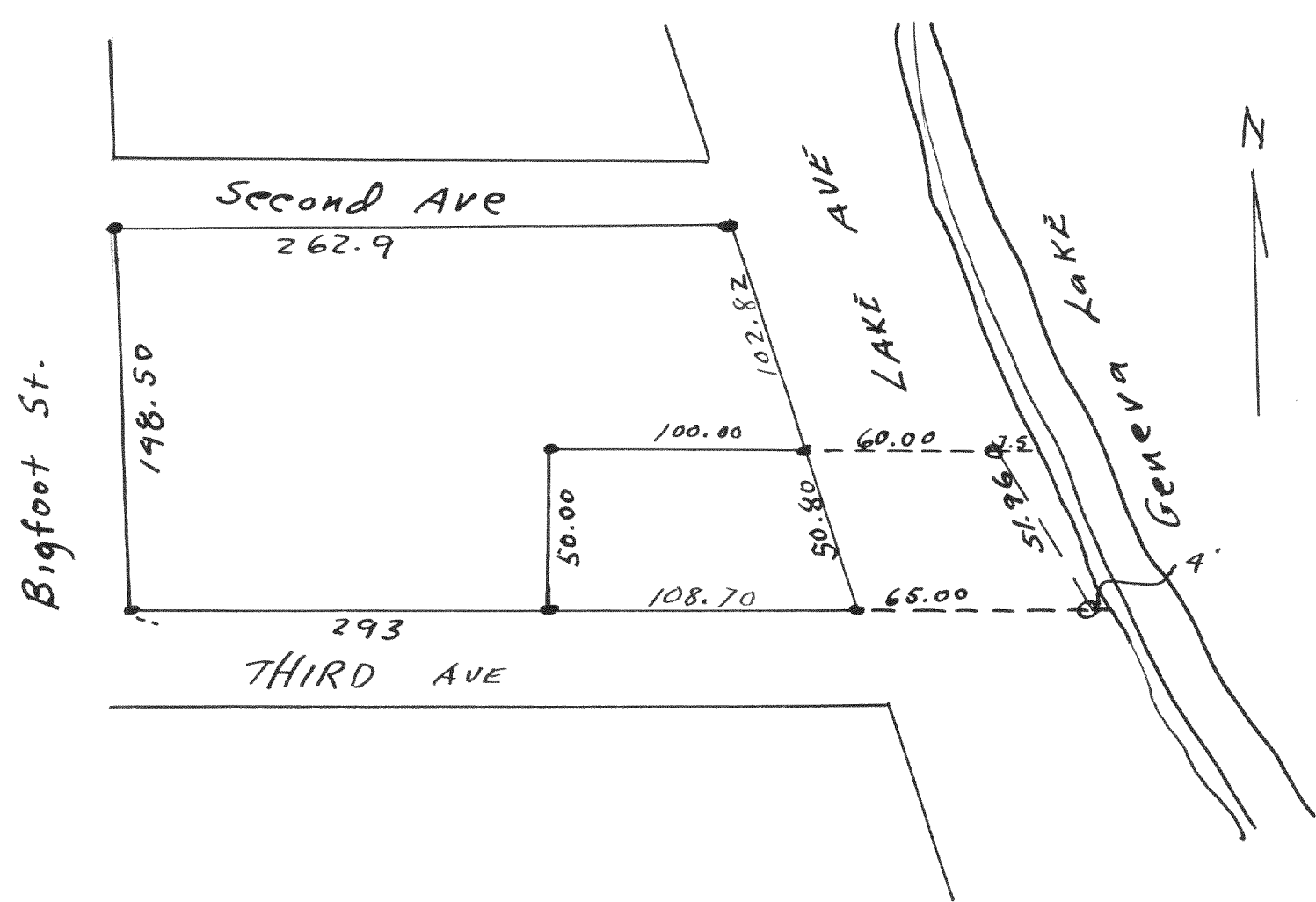


#1703



#1704



Plat of survey of a parcel of land located in the NW 1/4 of Sec. 19, T.1N. R.16E in the Village of Fontana on Geneva Lake Wal. Co. Wis
 July 1 1946
Floyd L Jensen
 Co. Sur.

I hereby Certify:
 1) That I have surveyed the lake of the land shown above.

Dec. 1946

Floyd L Jensen
 County Surveyor