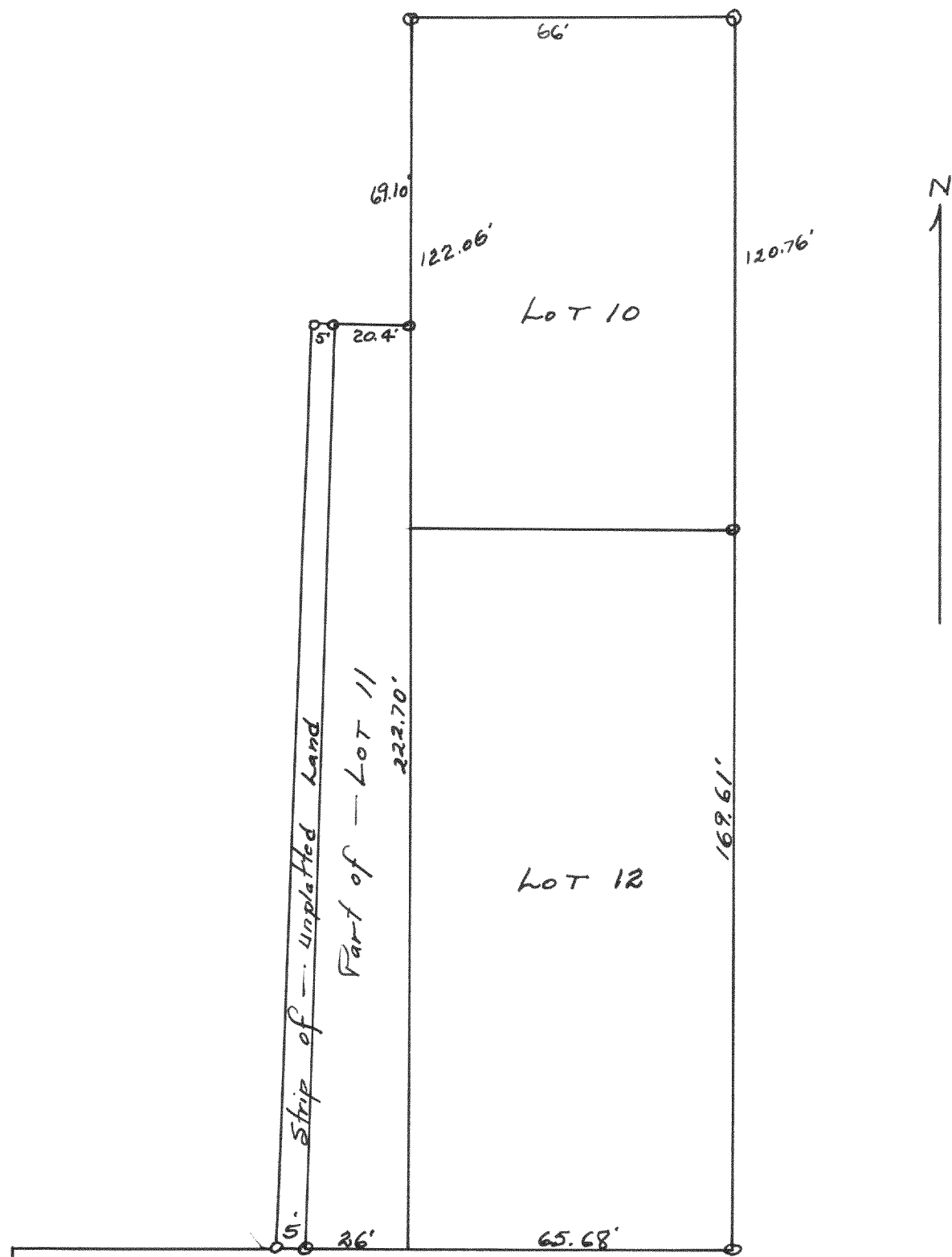


#1509



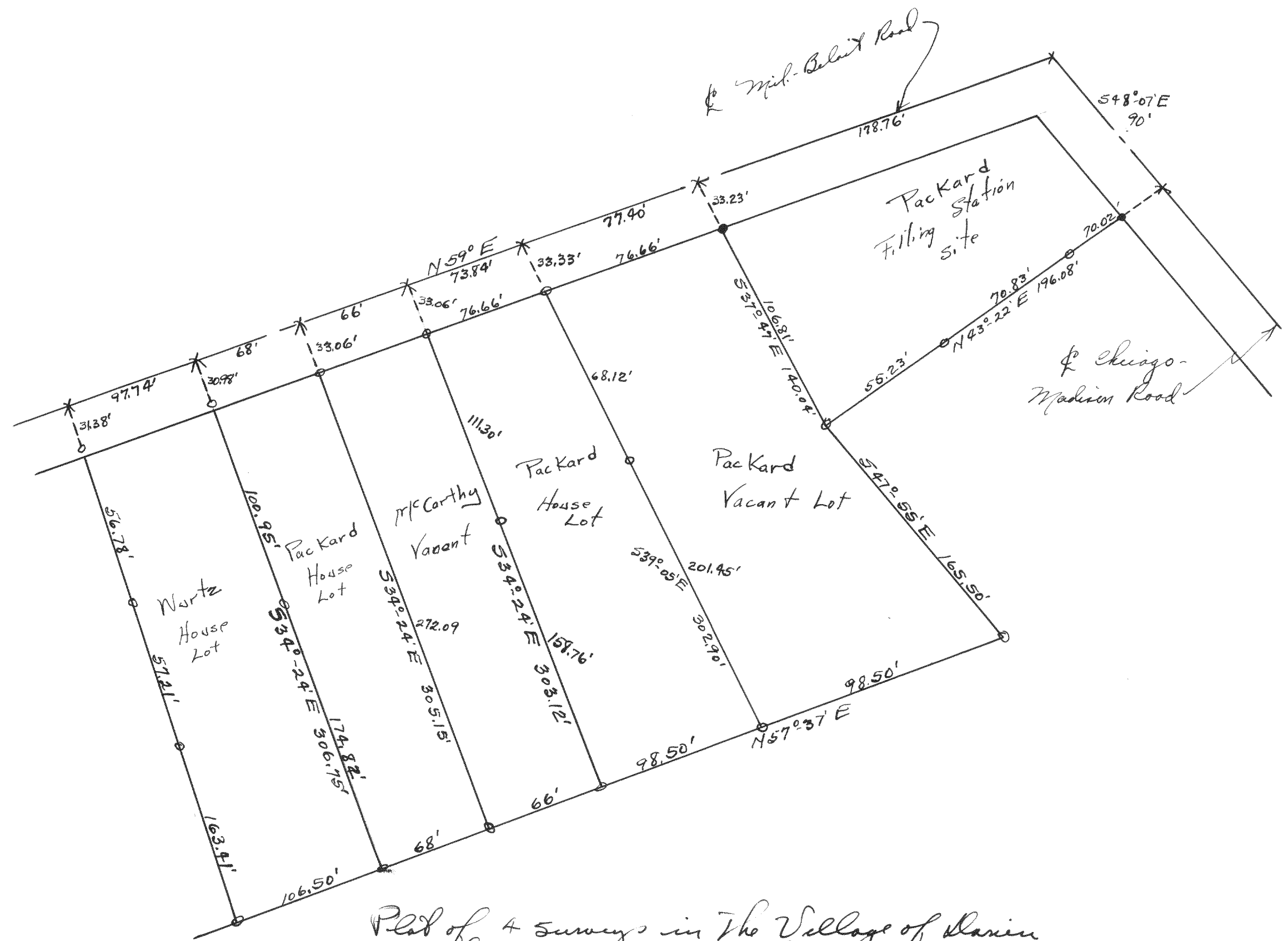
SW corner of the E 1/2 of the NE 1/4 of  
Fractional Section 1, T17N R16E

Plat of survey of Lot 10, 12, part of 11 and  
Johnson's Addition to the Village of  
Williams Bay and a 5 foot strip lying  
West of part of Lot 11.

May 1944

Lloyd S. Jensen  
County Surveyor

#1510



Plat of 4 surveys in The Village of Danien  
at the intersection of the 2 main highways  
as shown on the plat.

July 1944

Lloyd S. Jensen  
County Surveyor