

DESCRIPTION

Record of Survey.

no 163

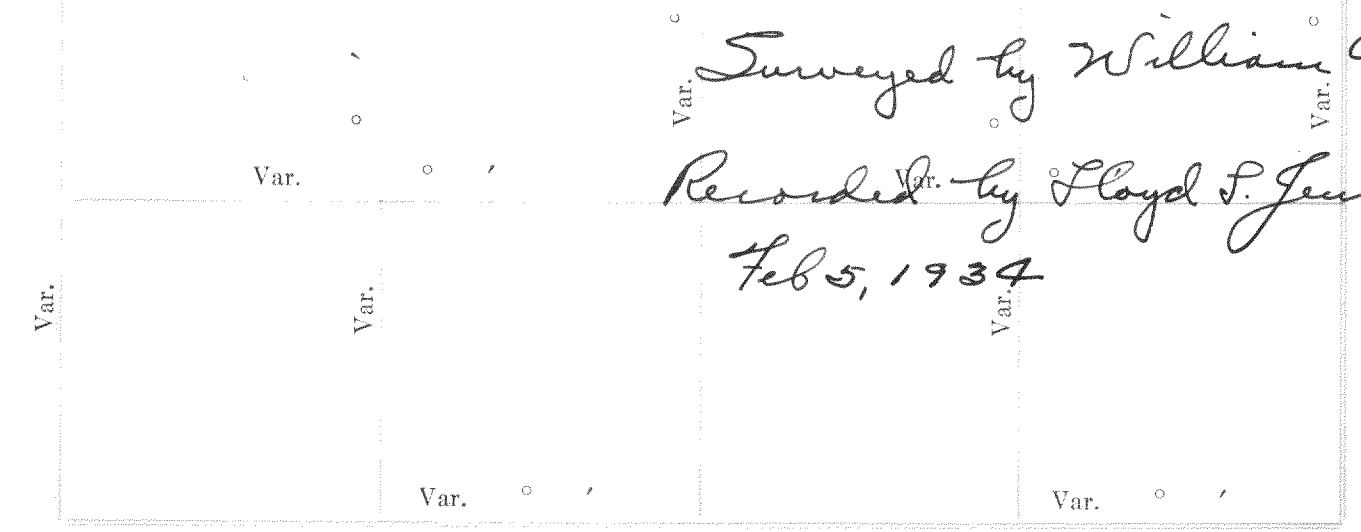
Township....., North of Range..... of 4 Principal Meridian
 as presented by the courses and distances on the following plat, and annexed field-notes of survey:
 Established the center of the section at the point of intersection of STRAIGHT quarter lines.
 Established all quarter-quarter corners upon the section boundary at proportional distances between known section and quarter section corners, according to the original field-notes of the Government survey.
 Established all lost corners at proportionate distances between known corners, according to the original field notes of the Government survey.

Alkham

Beginning^{Var.} at the^{North} point of intersection^{Var.} of E. boundary of East St. to S. boundary of S. St. being NW corner of block no 1 of Elderkin's Add; Thence East along the South boundary^{Var.} of Park Street 133'-4"; Thence^{Var.} S 245.5'; W 133.4' to a post in East boundary of East Street; Thence N. 245.5 ft. to place of beginning^{Var.}
 In a run on a 10 foot offset E. from the NE SE. corner of Hising's shop, found this^{Var.} line 4 ft. W of the line of center of St. as run from the north.

Surveyed by William Child CS.

Recorded by Floyd S. Jensen CS. Feb 5, 1934



Plat of Section....., Township..... North, Range..... of 4 Principal Meridian Scale 80 chains to 6 inches. The figures in red ink are the lengths of the lines as stated in the field-notes of the Government survey.

Declination of the Magnetic Meridian from the True Meridian.....
 Surveyed and sub-divided..... A. D. 1....., in accordance with the State Laws and Instructions of the Commissioner of the General Land office, and recorded on pages..... of Register in the County Clerk's office.

Witness my hand this..... day of..... A. D. 1.....
 SURVEYOR.

OF SECTION, QUARTER SECTION AND QUARTER QUARTER SECTION CORNERS

GOVERNMENT CORNERS				H. C. MILLER CO. MFG. STATIONERS. MILWAUKEE WISCONSIN				SUBDIVISION CORNERS						
No.	Bearing Trees	In. Dia.	Courses they bear	Links Distant	No.	Bearing Trees	In. Dia.	Courses they bear	Links Distant	No.	Bearing Trees	In. Dia.	Courses they bear	Links Distant

No. 1. N. W. Sec. Cor. identified, no 164 20th lumber
 2. N. E. Sec. Cor. identified, Alkham
 3. S. E. Sec. Cor. identified, Produced N. line of Rockwell street East to
 4. S. W. Sec. Cor. identified, E. of E. street, This is E 8" N of S end of walk,
 5. N. 1/4 Sec. Cor. identified, N on E of street 177' find pipe stake attested
 6. E. 1/4 Sec. Cor. identified, to by Geo. Filiteroft as North line of his lot.
 7. S. 1/4 Sec. Cor. identified, 34 South of this is on S. of old post. E from this
 8. W. 1/4 Sec. Cor. identified, pt. overpost set in place of fence post attested to by
 Subdivision Corners Filiteroft & made pt for Southeast of Filiteroft
 1. Center 1/4 Sec. Cor. lot and 34' N. set iron stake in line of old
 2. North 1/4-1/8 N. W. qr., fence for NE of Filiteroft lot & SE of
 3. East 1/4-1/8 N. W. qr., Beal's lot 76.5 N. of this is old fence post
 4. South 1/4-1/8 N. W. qr., as corner, from pipe stake at N.W. corner N.
 5. West 1/4-1/8 N. W. qr., 78.2' to stake found for SW of Cheany lot.
 6. Center 1/4-1/8 N. W. qr., The N line of Rockwell Street produced to
 7. North 1/4-1/8 N. E. qr., E. line of lots leaves 175.7 N. to NE corner.
 8. East 1/4-1/8 N. E. qr.,
 9. South 1/4-1/8 N. E. qr.,
 10. Center 1/4-1/8 N. E. qr.,
 11. East 1/4-1/8 S. E. qr.,
 12. South 1/4-1/8 S. E. qr.,
 13. West 1/4-1/8 S. E. qr.,
 14. Center 1/4-1/8 S. E. qr.,
 15. South 1/4-1/8 S. W. qr.,
 16. West 1/4-1/8 S. W. qr.,
 17. Center 1/4-1/8 S. W. qr.

Surveyed by William Child CS. July 25, 1913

Recorded by Floyd S. Jensen CS. Feb. 5, 1934

NAMES OF SWORN ASSISTANTS

CHAINMEN FLAGMEN AXMEN

no 165

Elkhorn
Block 14

Found west side of block to be 501.8

Found east side of block to be 502

Surveyed by William Child
CS.
March 10, 1908Recorded by Floyd S. Jensen
CS.
Feb. 5, 1934

no 166

Block 24 - Elkhorn

At N.W. corner of Blk. found iron stake
measured 5336.5 to stake set by former survey
as being 3.5' S. of SW. corner of lot, $336.5 - 3.5 = 333'$
distance on plat being 330' it gives .75 of a foot to
each 82.5' or 83.25 for each lot or 166.5 as the length
of lots 1, 2 & 3

Ran north line of blk. and on E. of blk. ran
5166.5 ft. across blk. for S. end of
lots 1, 2 & 3, from this line set 775 ft. across
lots 2 & 3 according to Rosenbauer Deed 72 feet 1 in.
N. of this run line that hits Mahoney's Cave.

Surveyed by William Child
CS.
April 21, 1909Recorded by Floyd S. Jensen
CS.
Feb. 5, 1934