

Record of Survey.

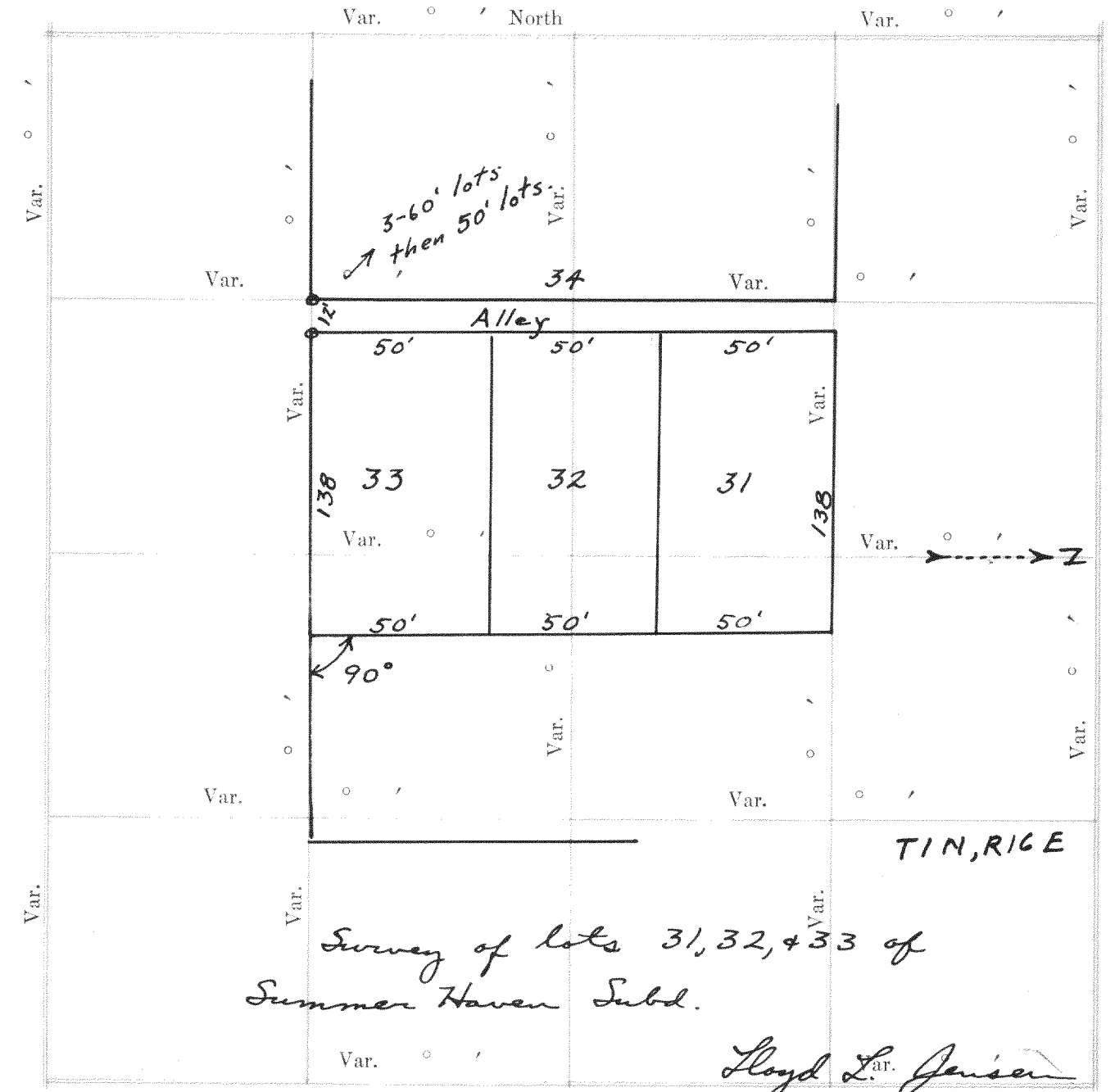
No. 753

Township..... North of Range..... of 4 Principal Meridian as presented by the courses and distances on the following plat, and annexed field-notes of survey:

Established the center of the section at the point of intersection of STRAIGHT quarter lines.

Established all quarter-quarter corners upon the section boundary at proportional distances between known section and quarter section corners, according to the original field-notes of the Government survey.

Established all lost corners at proportionate distances between known corners, according to the original field notes of the Government survey.



Plat of Section..... Township..... North, Range..... of Principal Meridian Scale 80 chains to 6 inches. The figures in red ink are the lengths of the lines as stated in the field-notes of the Government survey.

Declination of the Magnetic Meridian from the True Meridian..... Surveyed and sub-divided..... A. D. 1..... in accordance with the State Laws and Instructions of the Commissioner of the General Land office, and recorded on pages..... of Register in the County Clerk's office.

Witness my hand this..... day of..... A. D. 1..... SURVEYOR.

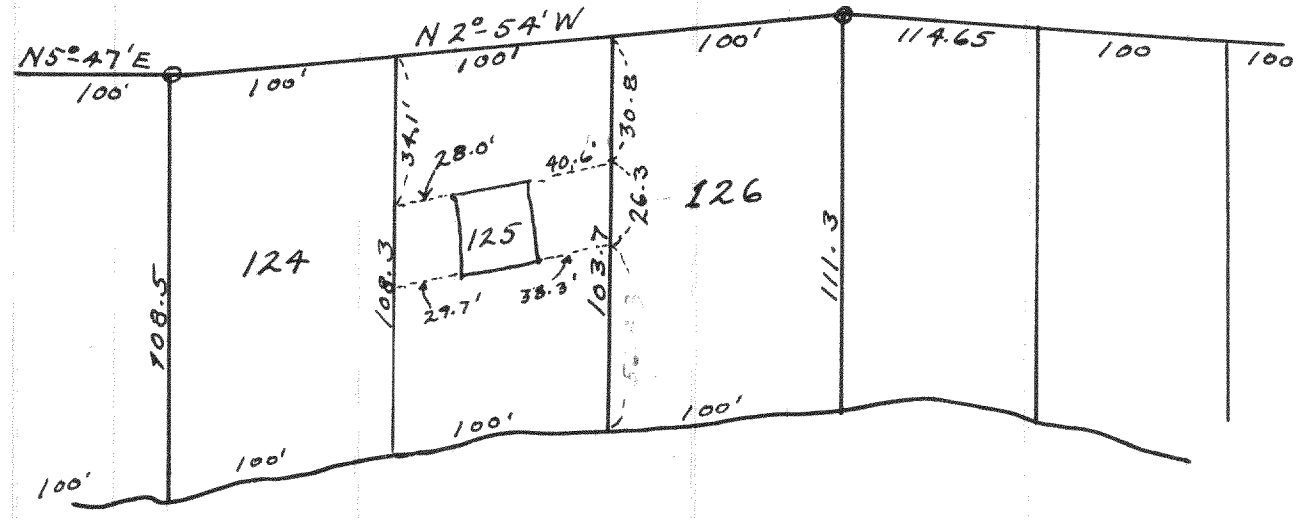
DESCRIPTION

OF SECTION, QUARTER SECTION AND QUARTER QUARTER SECTION CORNERS

GOVERNMENT CORNERS				H. C. MILLER CO. MFG. STATIONERS. MILWAUKEE X15000							
Bearing Trees	In. Dia.	Courses they bear	Links Distant	Bearing Trees	In. Dia.	Courses they bear	Links Distant	Bearing Trees	In. Dia.	Courses they bear	Links Distant

- No. 754
1. N. W. Sec. Cor. identified,
 2. N. E. Sec. Cor. identified,
 3. S. E. Sec. Cor. identified,
 4. S. W. Sec. Cor. identified,
 5. N. 1/4 Sec. Cor. identified,
 6. E. 1/4 Sec. Cor. identified,
 7. S. 1/4 Sec. Cor. identified,
 8. W. 1/4 Sec. Cor. identified,

- Subdivision Corners
1. Center 1/4 Sec. Cor.
 2. North 1/4-1/4s N. W. qr.,
 3. East 1/4-1/4s N. W. qr.,
 4. South 1/4-1/4s N. W. qr.,
 5. West 1/4-1/4s N. W. qr.,
 6. Center 1/4-1/4s N. W. qr.,
 7. North 1/4-1/4s N. E. qr.,
 8. East 1/4-1/4s N. E. qr.,
 9. South 1/4-1/4s N. E. qr.,
 10. Center 1/4-1/4s N. E. qr.,
 11. East 1/4-1/4s S. E. qr.,
 12. South 1/4-1/4s S. E. qr.,
 13. West 1/4-1/4s S. E. qr.,
 14. Center 1/4-1/4s S. E. qr.,
 15. South 1/4-1/4s S. W. qr.,
 16. West 1/4-1/4s S. W. qr.,
 17. Center 1/4-1/4s S. W. qr.



Lot 125 - Unit 1 of Country Club Estates.

Lloyd L. Jensen
County Surveyor
By W. E. H.

NAMES OF SWORN ASSISTANTS

CHAINMEN

FLAGMEN

AXMEN

