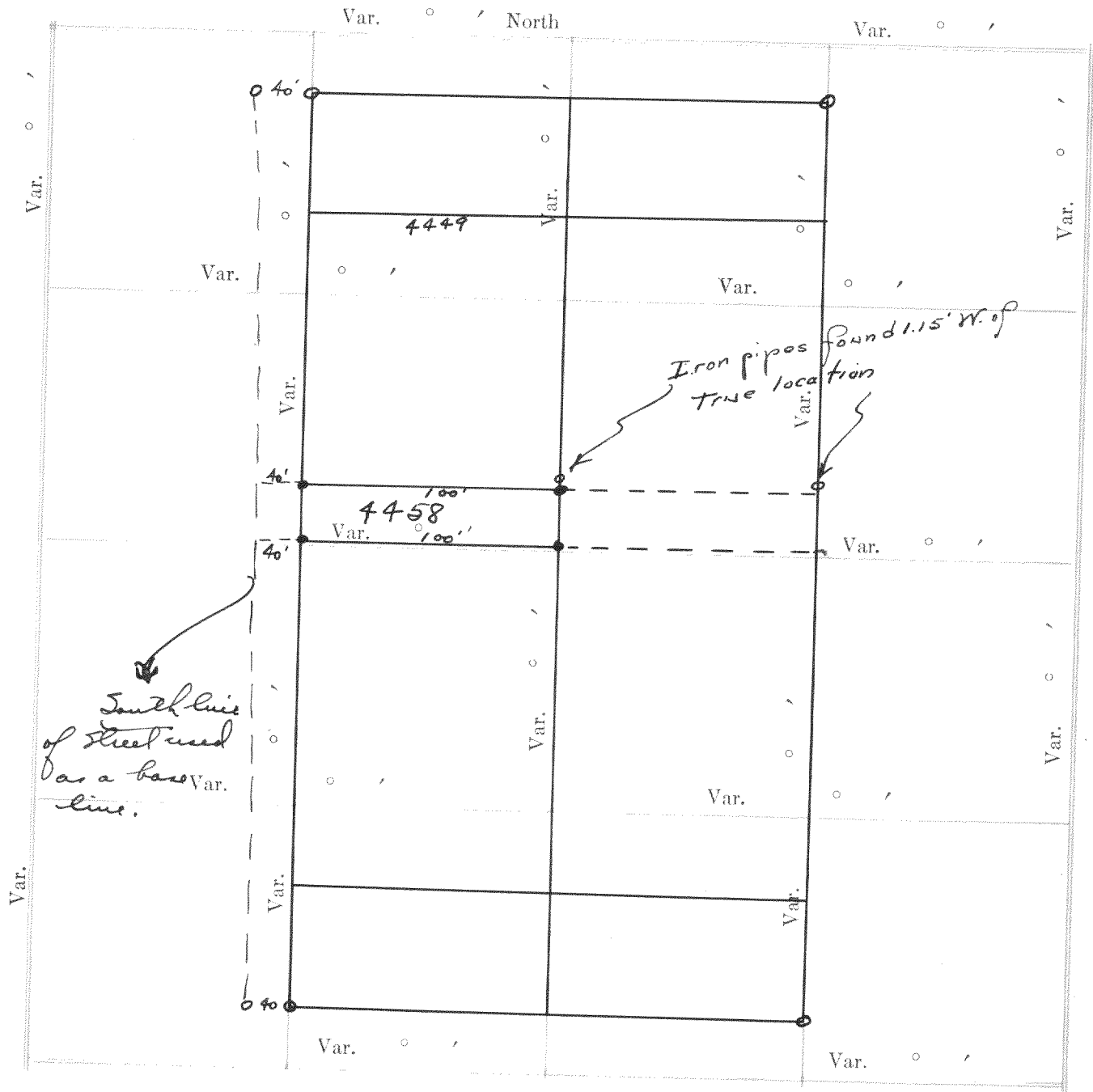


Record of Survey.

DESCRIPTION

Township....., North of Range..... of 4 Principal Meridian  
as presented by the courses and distances on the following plat, and annexed field-notes of survey:  
Established the center of the section at the point of intersection of STRAIGHT quarter lines.  
Established all quarter-quarter corners upon the section boundary at proportional distances between known  
section and quarter section corners, according to the original field-notes of the Government survey.  
Established all lost corners at proportionate distances between known corners, according to the original field  
notes of the Government survey.

no. 637



Plat of Section....., Township..... North, Range..... of 4 Principal Meridian Scale  
80 chains to 6 inches. The figures in red ink are the lengths of the lines as stated in the field-notes of the  
Government survey.  
Declination of the Magnetic Meridian from the True Meridian.....  
Surveyed and sub-divided..... A. D. 1 , in accordance  
with the State Laws and Instructions of the Commissioner of the General Land office, and recorded on pages  
..... of Register in the County Clerk's office.  
Witness my hand this..... day of..... A. D. 1  
..... SURVEYOR.

OF SECTION, QUARTER SECTION AND QUARTER QUARTER SECTION CORNERS

GOVERNMENT CORNERS

- No.  
1. N. W. Sec. Cor. identified,  
2. N. E. Sec. Cor. identified,  
3. S. E. Sec. Cor. identified,  
4. S. W. Sec. Cor. identified,  
5. N. 1/4 Sec. Cor. identified,  
6. E. 1/4 Sec. Cor. identified,  
7. S. 1/4 Sec. Cor. identified,  
8. W. 1/4 Sec. Cor. identified,

Subdivision Corners

- No.  
1. Center 1/4 Sec. Cor.  
2. North 1/4-1/4s N. W. qr.,  
3. East 1/4-1/4s N. W. qr.,  
4. South 1/4-1/4s N. W. qr.,  
5. West 1/4-1/4s N. W. qr.,  
6. Center 1/4-1/4s N. W. qr.,  
7. North 1/4-1/4s N. E. qr.,  
8. East 1/4-1/4s N. E. qr.,  
9. South 1/4-1/4s N. E. qr.,  
10. Center 1/4-1/4s N. E. qr.,  
11. East 1/4-1/4s S. E. qr.,  
12. South 1/4-1/4s S. E. qr.,  
13. West 1/4-1/4s S. E. qr.,  
14. Center 1/4-1/4s S. E. qr.,  
15. South 1/4-1/4s S. W. qr.,  
16. West 1/4-1/4s S. W. qr.,  
17. Center 1/4-1/4s S. W. qr.

Survey of lot 4458 of Section 3 of Peel Lake  
Highlands.  
May 1935

Lloyd L. Jensen  
County Surveyor

o-drum pipes found  
o-drum pipe placed

NAMES OF SWORN ASSISTANTS

CHAINMEN

FLAGMEN

AXMEN

