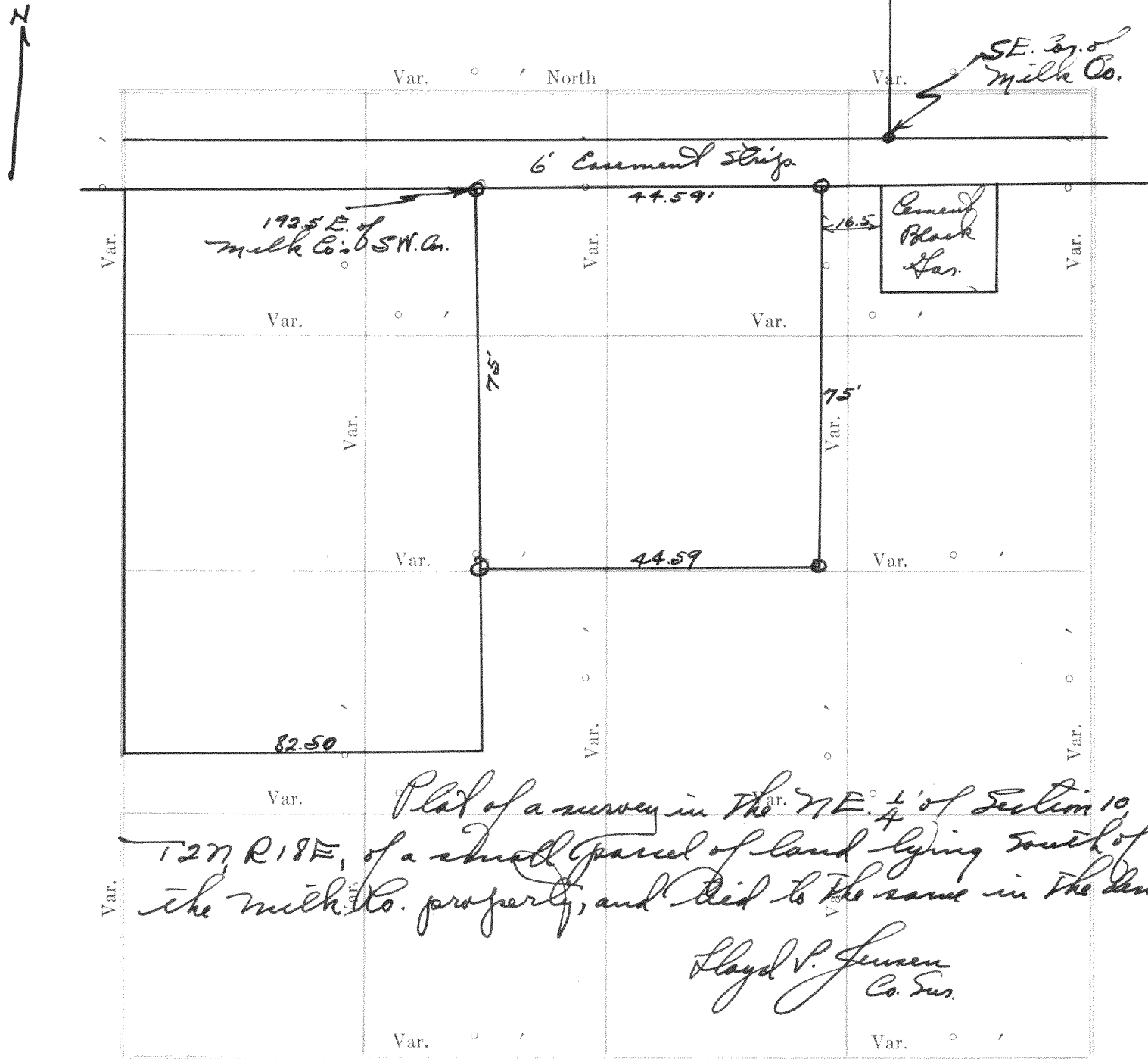


Record of Survey.

No. 575

Township....., North of Range..... of 4 Principal Meridian  
as presented by the courses and distances on the following plat, and annexed field-notes of survey:  
Established the center of the section at the point of intersection of STRAIGHT quarter lines.  
Established all quarter-quarter corners upon the section boundary at proportional distances between known section and quarter section corners, according to the original field-notes of the Government survey.  
Established all lost corners at proportionate distances between known corners, according to the original field notes of the Government survey.



Plat of Section....., Township..... North, Range..... of 4 Principal Meridian Scale  
80 chains to 6 inches. The figures in red ink are the lengths of the lines as stated in the field-notes of the  
Government survey.  
Declination of the Magnetic Meridian from the True Meridian.....  
Surveyed and sub-divided..... A. D. 1....., in accordance  
with the State Laws and Instructions of the Commissioner of the General Land office, and recorded on pages  
..... of Register in the County Clerk's office.  
Witness my hand this..... day of..... A. D. 1.....  
..... SURVEYOR.

DESCRIPTION

192

OF SECTION, QUARTER SECTION AND QUARTER QUARTER SECTION CORNERS

GOVERNMENT CORNERS				H. C. MILLER CO. MAP. STATIONERS. MILWAUKEE WISCONSIN								
No.	Bearing Trees	In. Dia.	Courses they bear	Links Distant	Bearing Trees	In. Dia.	Courses they bear	Links Distant	Bearing Trees	In. Dia.	Courses they bear	Links Distant
1.	N. W. Sec. Cor. identified,											
2.	N. E. Sec. Cor. identified,											
3.	S. E. Sec. Cor. identified,											
4.	S. W. Sec. Cor. identified,											
5.	N. 1/4 Sec. Cor. identified,											
6.	E. 1/4 Sec. Cor. identified,											
7.	S. 1/4 Sec. Cor. identified,											
8.	W. 1/4 Sec. Cor. identified,											
Subdivision Corners												
No.												
1.	Center 1/4 Sec. Cor.											
2.	North 1/4-1/4s N. W. qr.,											
3.	East 1/4-1/4s N. W. qr.,											
4.	South 1/4-1/4s N. W. qr.,											
5.	West 1/4-1/4s N. W. qr.,											
6.	Center 1/4-1/4s N. W. qr.,											
7.	North 1/4-1/4s N. E. qr.,											
8.	East 1/4-1/4s N. E. qr.,											
9.	South 1/4-1/4s N. E. qr.,											
10.	Center 1/4-1/4s N. E. qr.,											
11.	East 1/4-1/4s S. E. qr.,											
12.	South 1/4-1/4s S. E. qr.,											
13.	West 1/4-1/4s S. E. qr.,											
14.	Center 1/4-1/4s S. E. qr.,											
15.	South 1/4-1/4s S. W. qr.,											
16.	West 1/4-1/4s S. W. qr.,											
17.	Center 1/4-1/4s S. W. qr.,											

no. 576

Assembly Grounds  
21-2-16

Block I

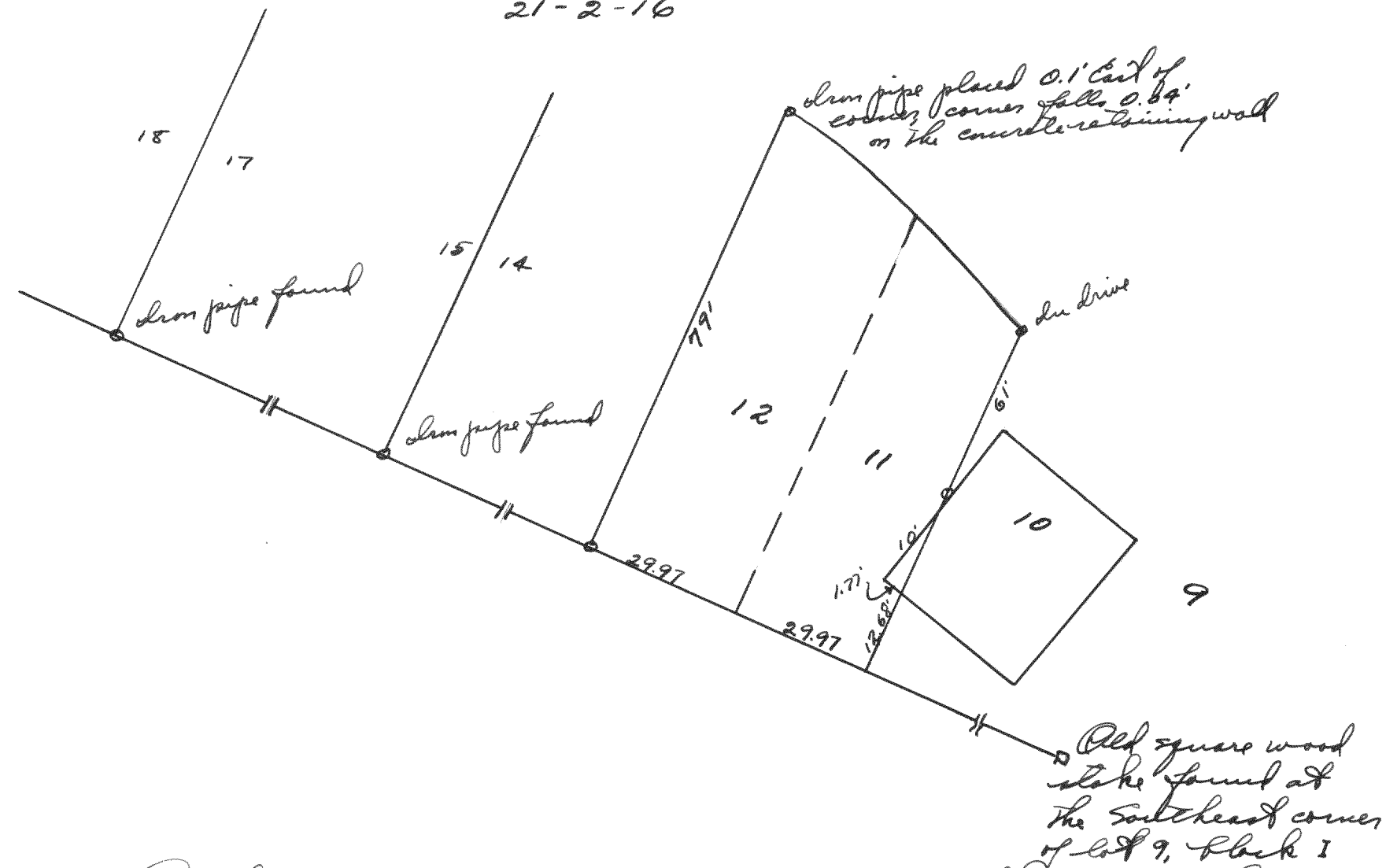
Original sq. wood stake found at the Southeast corner of Lot 9 of Block I.

Plot of a survey of part of Block I of the Assembly grounds, located in the SE 1/4 of 21-2-16. Surveyed by Floyd S. Jensen County Surveyor Nov 8, 1934

Plat of a survey of part of Block I of the  
Assembly grounds, located in the SE 1/4 of 21-2-16.  
Surveyed by Lloyd V. Jensen  
County Surveyor  
Nov 8, 1934

No. 577

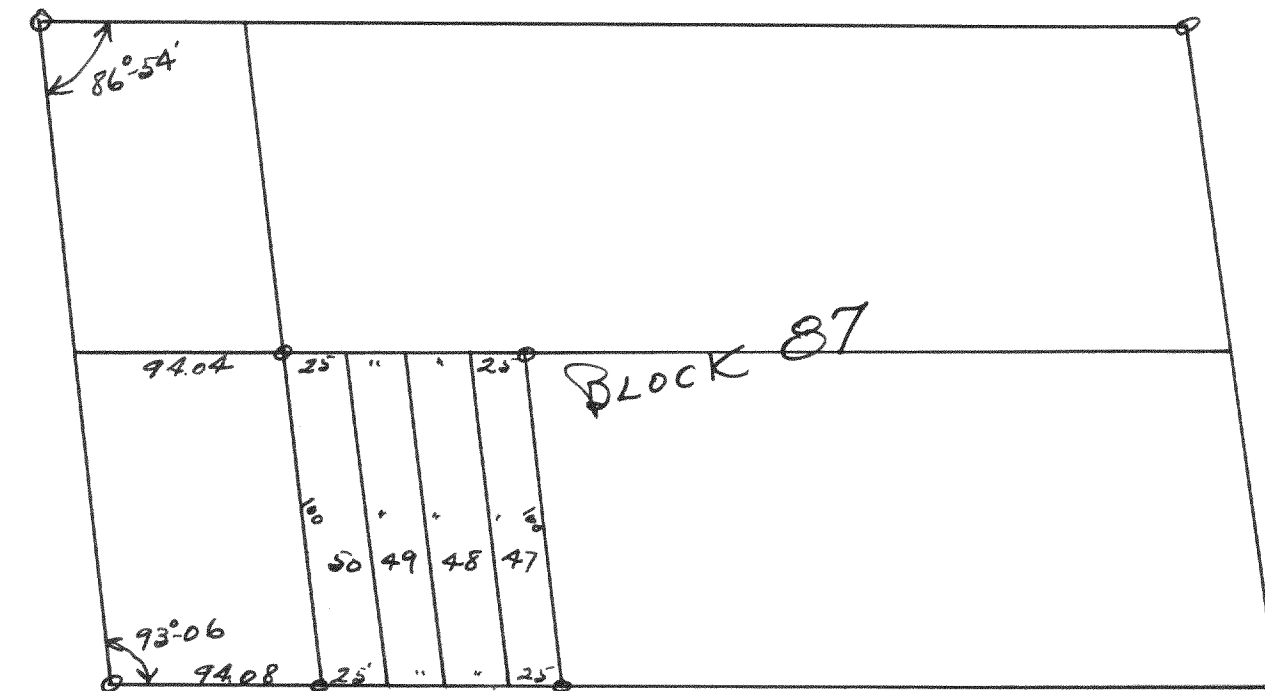
Assembly Grounds  
21-2-16



Plat of a survey of lots 11 & 12 of block I of the  
Assembly Grounds to locate the corners of the lots and  
to show how much the new house on lot 10 sets upon  
the lot.

Surveyed by Floyd S. Jensen  
Co. Sur.  
Nov. 8, 1934

LAKE WANDAWEGA SUBD.



Plot of a survey of lots 50 - 47 in block 87  
of Lake Wandauega Subd. in T37N, R16E.  
Found iron pipes at the corners of the block,  
and placed iron pipes at the ~~and~~ 4 corners of the  
4 lots.

Surveyed by Lloyd S. Jensen  
Co. Sur.  
Dec. 1934