

Record of Survey.

no 528

14-1-16

Township....., North of Range TONTANA of 4 Principal Meridian as presented by the courses and distances on the following plat, and annexed field-notes of survey:

Established the center of the section at the point of intersection of STRAIGHT quarter lines.

Established all quarter-quarter corners upon the section boundary at proportional distances between known section and quarter section corners, according to the original field-notes of the Government survey.

Established all lost corners at proportionate distances between known corners, according to the original field notes of the Government survey.



Survey of Reid Homestead located in the Village of Tontana

Plat of Section..... North Range..... of 4 Principal Meridian Scale 80 chains to 6 inches. The figures in red ink are the lengths of the lines as stated in the field-notes of the Government survey.

Surveyed by Wm Child

Declination of the Magnetic Meridian from the True Meridian.....

Surveyed and sub-divided..... *Recorded by Lloyd Jensen* in accordance with the State Laws and Instructions of the Commissioner of the General Land Office, and recorded on pages..... of Register in the County Clerk's office.

Witness my hand this..... day of..... A. D. 1

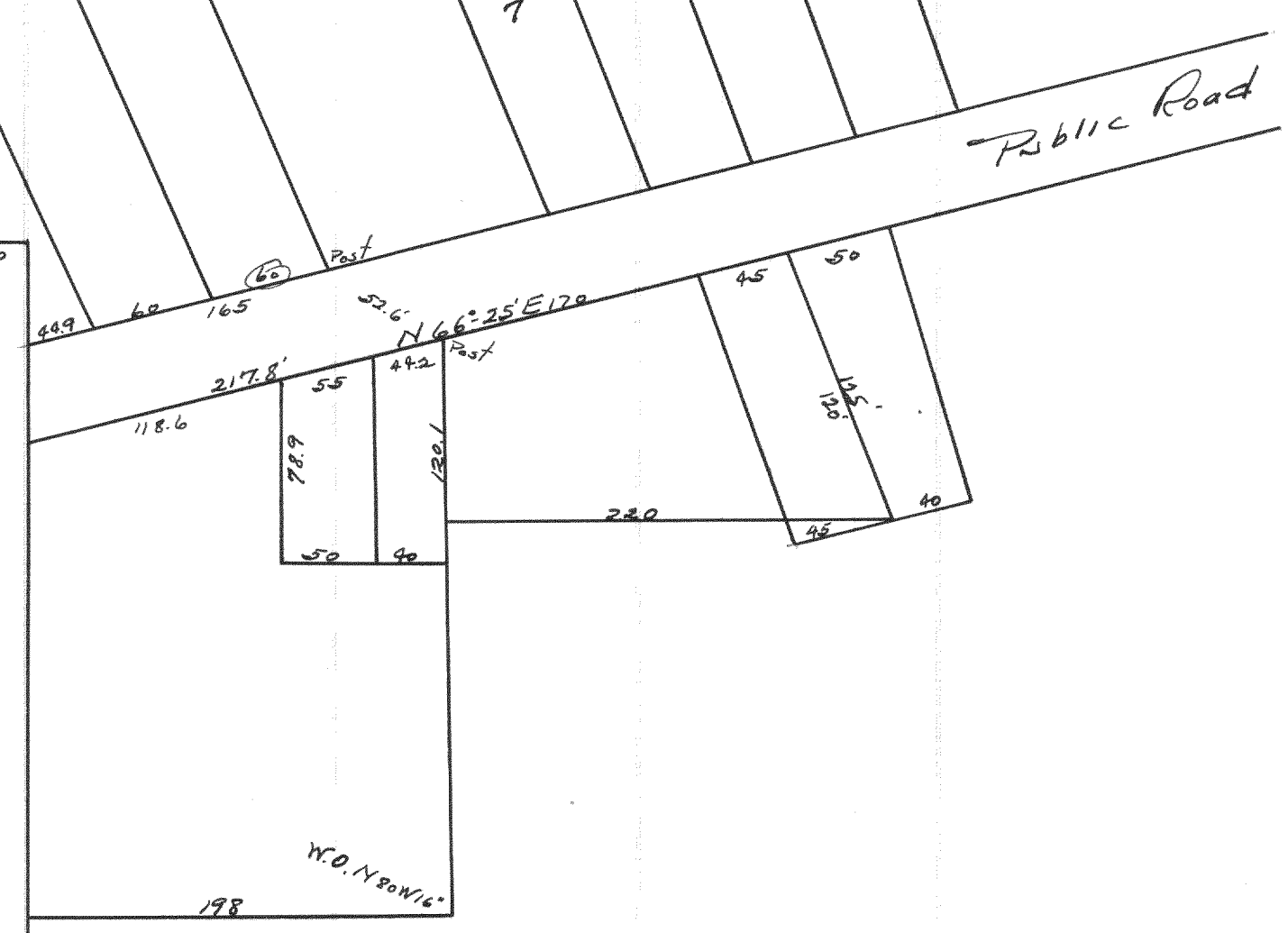
..... SURVEYOR.

DESCRIPTION

22-2-16
OF SECTION, QUARTER SECTION AND QUARTER QUARTER SECTION CORNERS

GOVERNMENT CORNERS				MILWAUKEE CO., MFG. STATIONERS, MILWAUKEE WISCONSIN								
No.	Bearing	In. Dia.	Courses they bear	Links Distant	Bearing	In. Dia.	Courses they bear	Links Distant	Bearing	In. Dia.	Courses they bear	Links Distant
1.	N. W. Sec. Cor. identified,											
2.	N. E. Sec. Cor. identified,											
3.	S. E. Sec. Cor. identified,											
4.	S. W. Sec. Cor. identified,											
5.	N. 1/4 Sec. Cor. identified,											
6.	E. 1/4 Sec. Cor. identified,											
7.	S. 1/4 Sec. Cor. identified,											
8.	W. 1/4 Sec. Cor. identified,											
Subdivision Corners												
No.	Bearing	In. Dia.	Courses they bear	Links Distant	Bearing	In. Dia.	Courses they bear	Links Distant	Bearing	In. Dia.	Courses they bear	Links Distant
1.	Center 1/4 Sec. Cor.											
2.	North 1/4-1/4s N. W. qr.,											
3.	East 1/4-1/4s N. W. qr.,											
4.	South 1/4-1/4s N. W. qr.,											
5.	West 1/4-1/4s N. W. qr.,											
6.	Center 1/4-1/4s N. W. qr.,											
7.	North 1/4-1/4s N. E. qr.,											
8.	East 1/4-1/4s N. E. qr.,											
9.	South 1/4-1/4s N. E. qr.,											
10.	Center 1/4-1/4s N. E. qr.,											
11.	East 1/4-1/4s S. E. qr.,											
12.	South 1/4-1/4s S. E. qr.,											
13.	West 1/4-1/4s S. E. qr.,											
14.	Center 1/4-1/4s S. E. qr.,											
15.	South 1/4-1/4s S. W. qr.,											
16.	West 1/4-1/4s S. W. qr.,											
17.	Center 1/4-1/4s S. W. qr.,											

no. 529



Plat of a survey of 3 small parcels the subdivisions of Sans Souci and Mercedes Springs

Surveyed by Wm Child

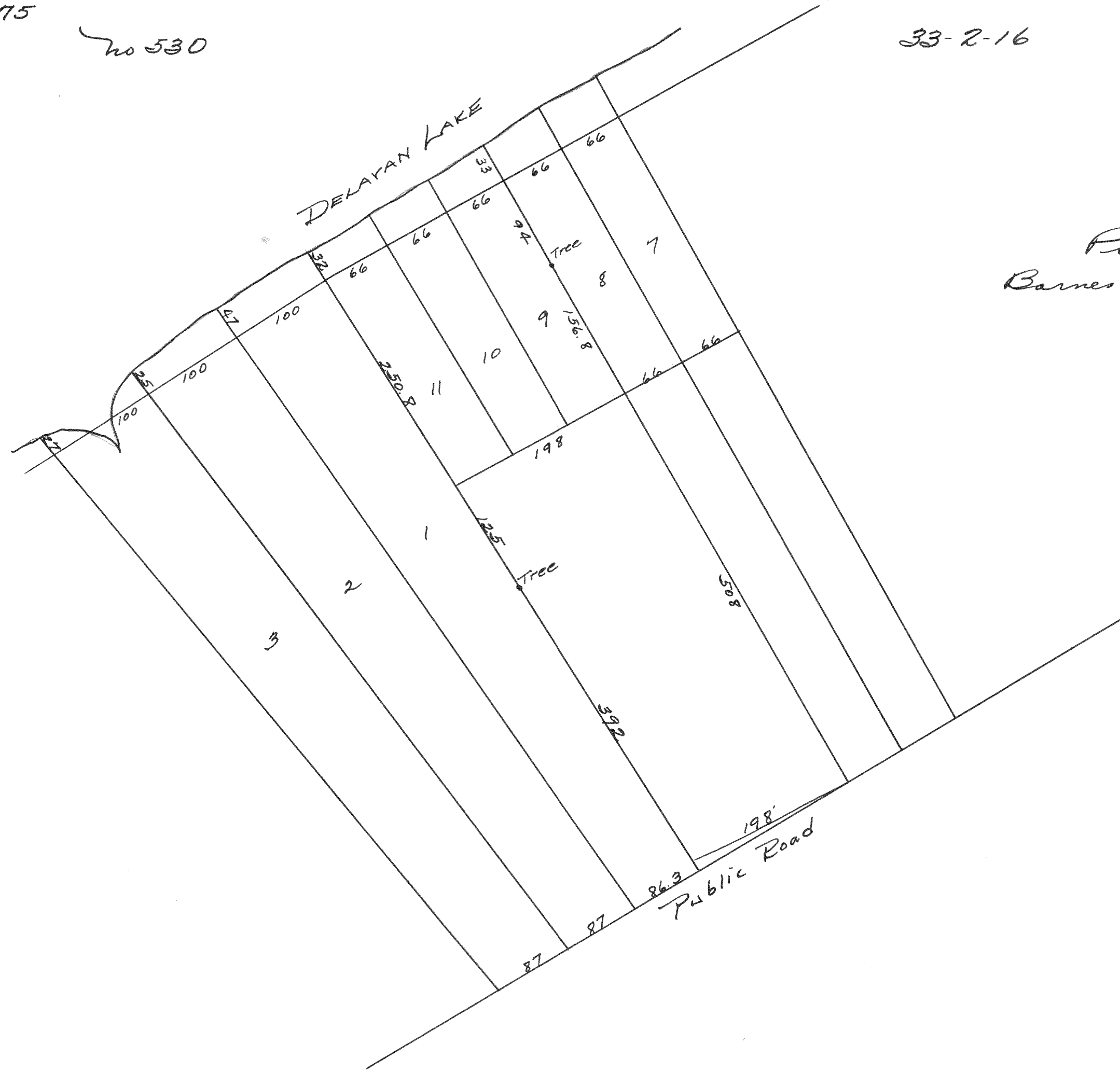
Recorded by Lloyd Jensen April 26, 1934

NAMES OF SWORN ASSISTANTS

CHAINMEN

FLAGMEN

AXMEN



Plat of survey of lots in Collier Lane and
Barnes and Von Steensmitch Subdivisions.

Surveyed by Wm Child
CS.

Recorded by Floyd S. Jensen
CS.
April 20, 1934