

DESCRIPTION

Record of Survey.

OF SECTION, QUARTER SECTION AND QUARTER QUARTER SECTION CORNERS

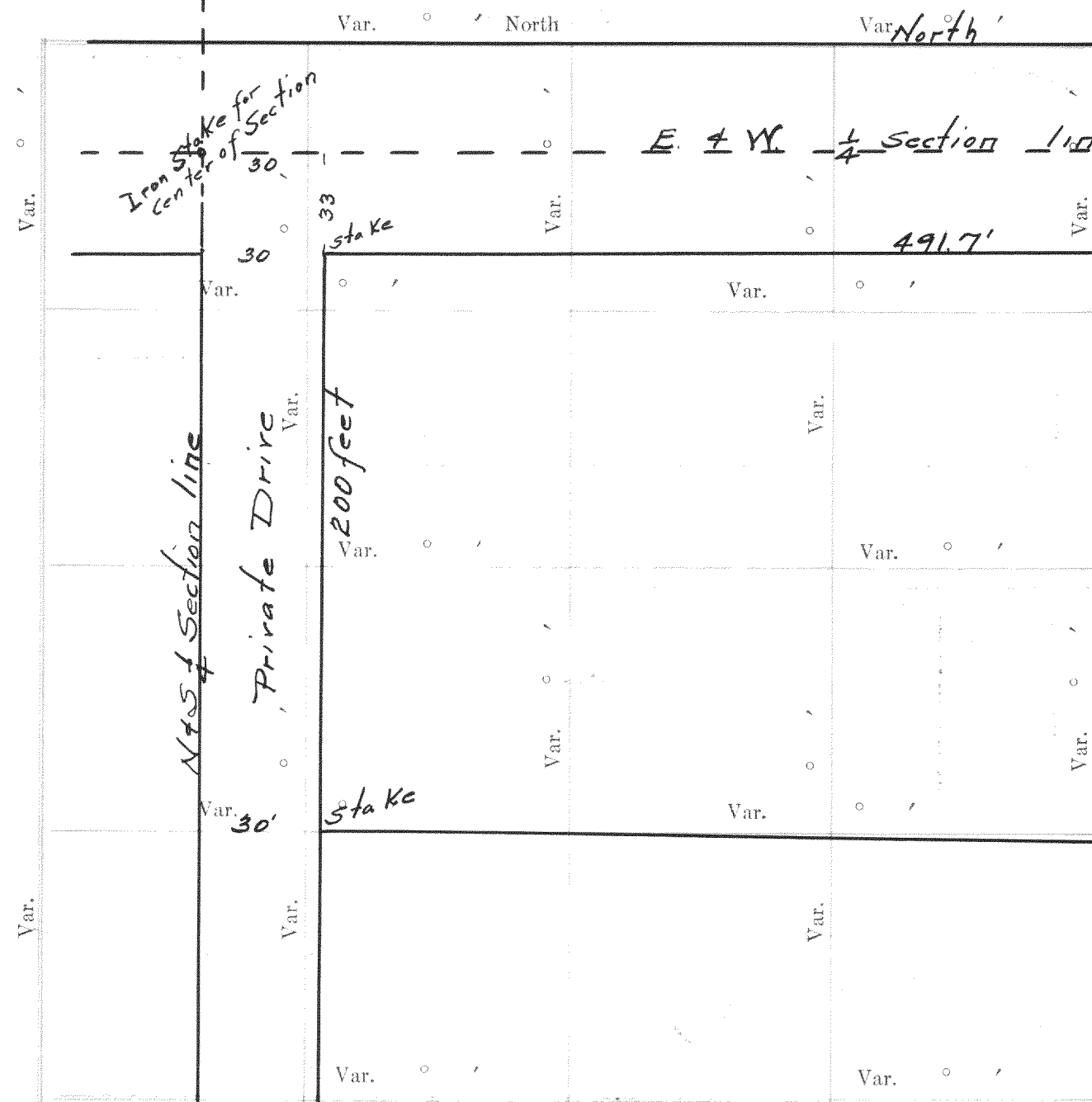
no. 362

Township..... North of Range..... of 4 Principal Meridian as presented by the courses and distances on the following plat, and annexed field-notes of survey:

Established the center of the section at the point of intersection of STRAIGHT quarter lines.

Established all quarter-quarter corners upon the section boundary at proportional distances between known section and quarter section corners, according to the original field-notes of the Government survey.

Established all lost corners at proportionate distances between known corners, according to the original field notes of the Government survey.



GOVERNMENT CORNERS				H. C. MILLER CO., MFG. STATIONERS, MILWAUKEE WISCONSIN								
No.	Bearing	In. Dia.	Courses they bear	Links Distant	Bearing	In. Dia.	Courses they bear	Links Distant	Bearing	In. Dia.	Courses they bear	Links Distant
1.												
2.												
3.												
4.												
5.												
6.												
7.												
8.												

No.	Description
1.	Center 1/4 Sec. Cor.
2.	North 1/4-1/4s N. W. qr.,
3.	East 1/4-1/4s N. W. qr.,
4.	South 1/4-1/4s N. W. qr.,
5.	West 1/4-1/4s N. W. qr.,
6.	Center 1/4-1/4s N. W. qr.,
7.	North 1/4-1/4s N. E. qr.,
8.	East 1/4-1/4s N. E. qr.,
9.	South 1/4-1/4s N. E. qr.,
10.	Center 1/4-1/4s N. E. qr.,
11.	East 1/4-1/4s S. E. qr.,
12.	South 1/4-1/4s S. E. qr.,
13.	West 1/4-1/4s S. E. qr.,
14.	Center 1/4-1/4s S. E. qr.,
15.	South 1/4-1/4s S. W. qr.,
16.	West 1/4-1/4s S. W. qr.,
17.	Center 1/4-1/4s S. W. qr.,

Plat of a survey made for Mr. Deham of Lake Geneva and by the direction of Ruben Locky of Clarkhom, on the South east quarter of section No I, Town No I North, Range No 16E and being in the Village of Williams Bay, Walworth County, Wisconsin.

Clarkhom June 30, 1923
W. C. Hill

Recorded by Lloyd S. Jensen
March 10, 1934

Plat of Section..... Township..... North, Range..... of 4 Principal Meridian Scale 80 chains to 6 inches. The figures in red ink are the lengths of the lines as stated in the field-notes of the Government survey.

Declination of the Magnetic Meridian from the True Meridian.....

Surveyed and sub-divided..... A. D. 1..... in accordance with the State Laws and Instructions of the Commissioner of the General Land office, and recorded on pages..... of Register in the County Clerk's office.

Witness my hand this..... day of..... A. D. 1.....

..... SURVEYOR.

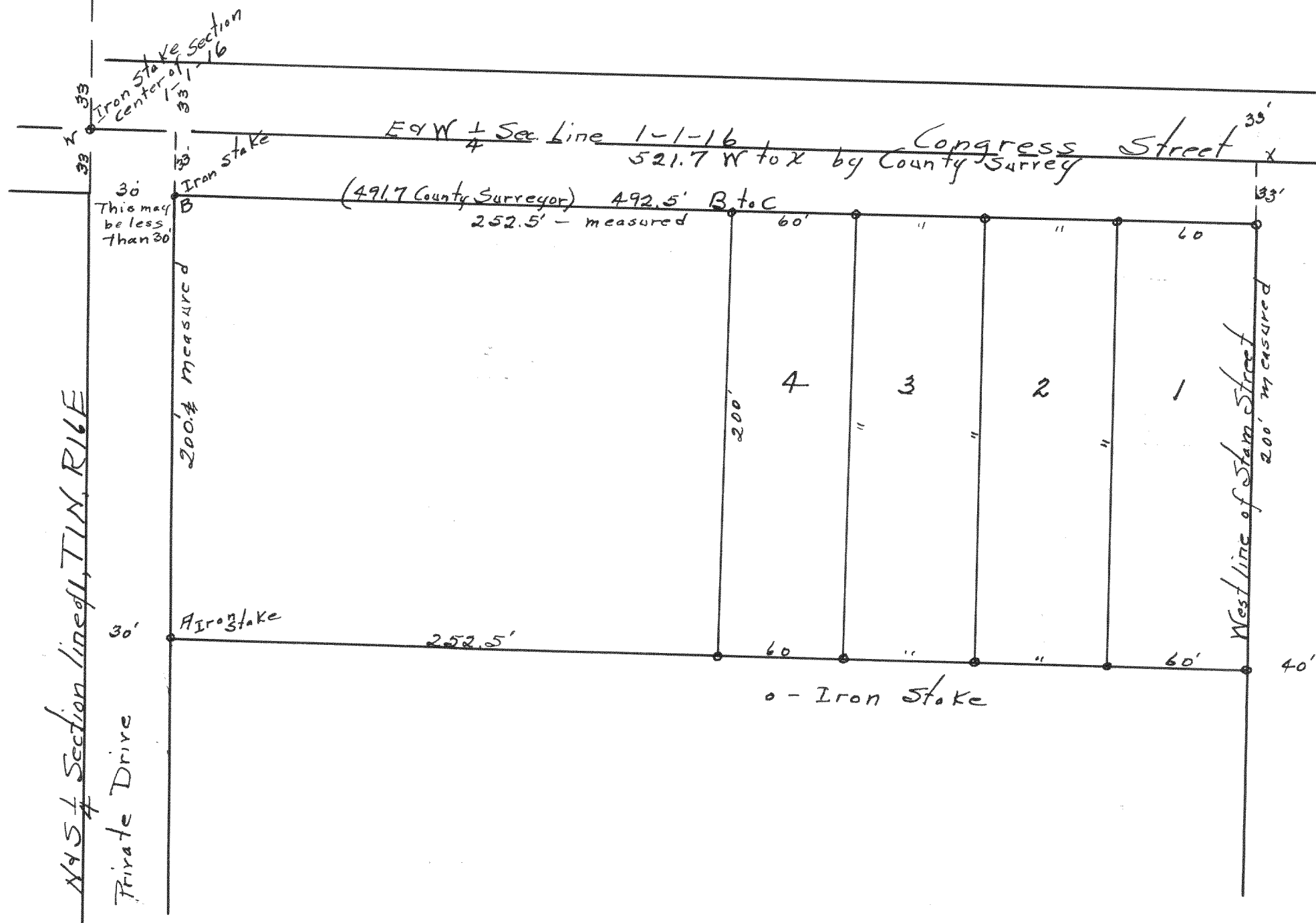
NAMES OF SWORN ASSISTANTS

CHAINMEN

FLAGMEN

AXMEN

no 363



Surveyor's Certificate
 This is to certify that by request of Wm Pearson, owner, we have surveyed for him four lots, each 60 ft. by 200 ft. N. 45. off the east end of a tract of land 521.7 ft. E & W by 233 ft. N. 45. located in the NW corner of the SE 1/4 of Sect. 1, T1N, R17E, Town of Walworth and Village of Williams Bay, Wis. as surveyed in 1923 by County Surveyor Wm Child. For convenience these parcels or lots are numbered from E to W, 1 to 4. Iron stakes are set at all corners and at A & B. This map correctly represents said survey. Quarter lines are as located by County Surveyor and not verified by this survey.

Jan. 27, 1923 J. C. Skells Surveyor

Recorded by Lloyd P. Jensen
 March 10, 1934