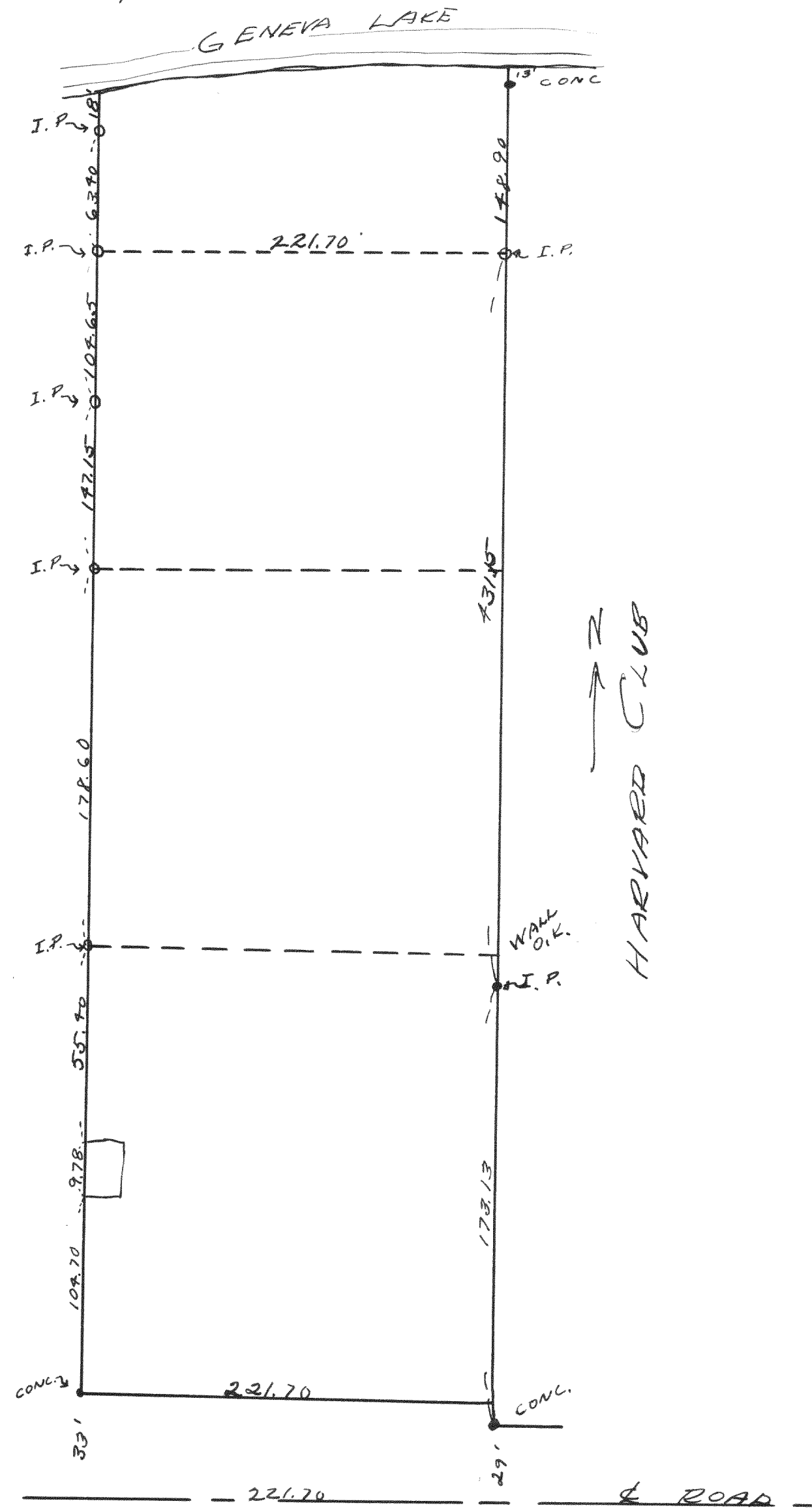
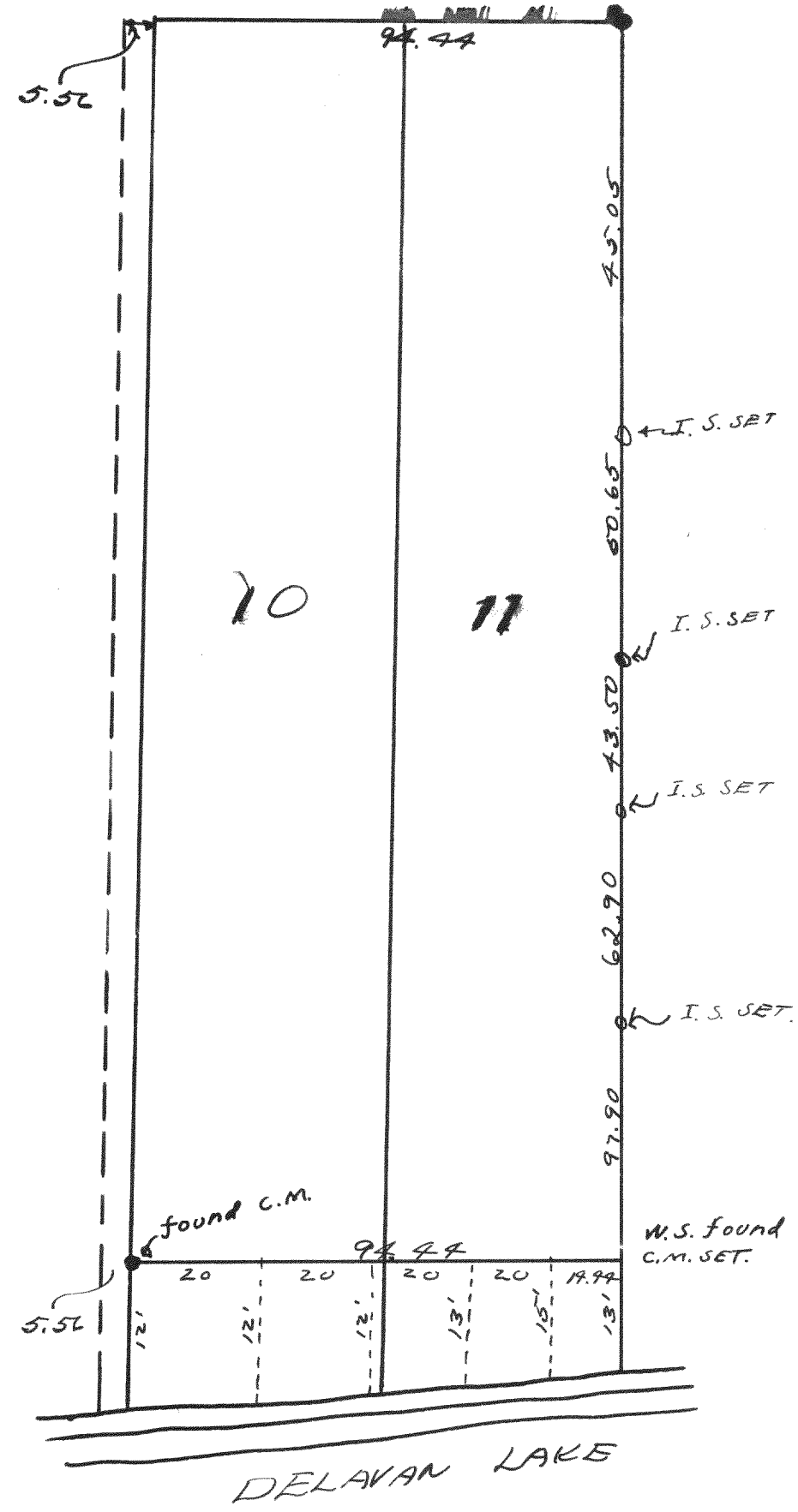


NO. 851



Survey of pt. of NE 1/4 sec. (13-1-16)  
 date = 7-21-38  
 Lloyd L. Jensen  
 by H.E.J.

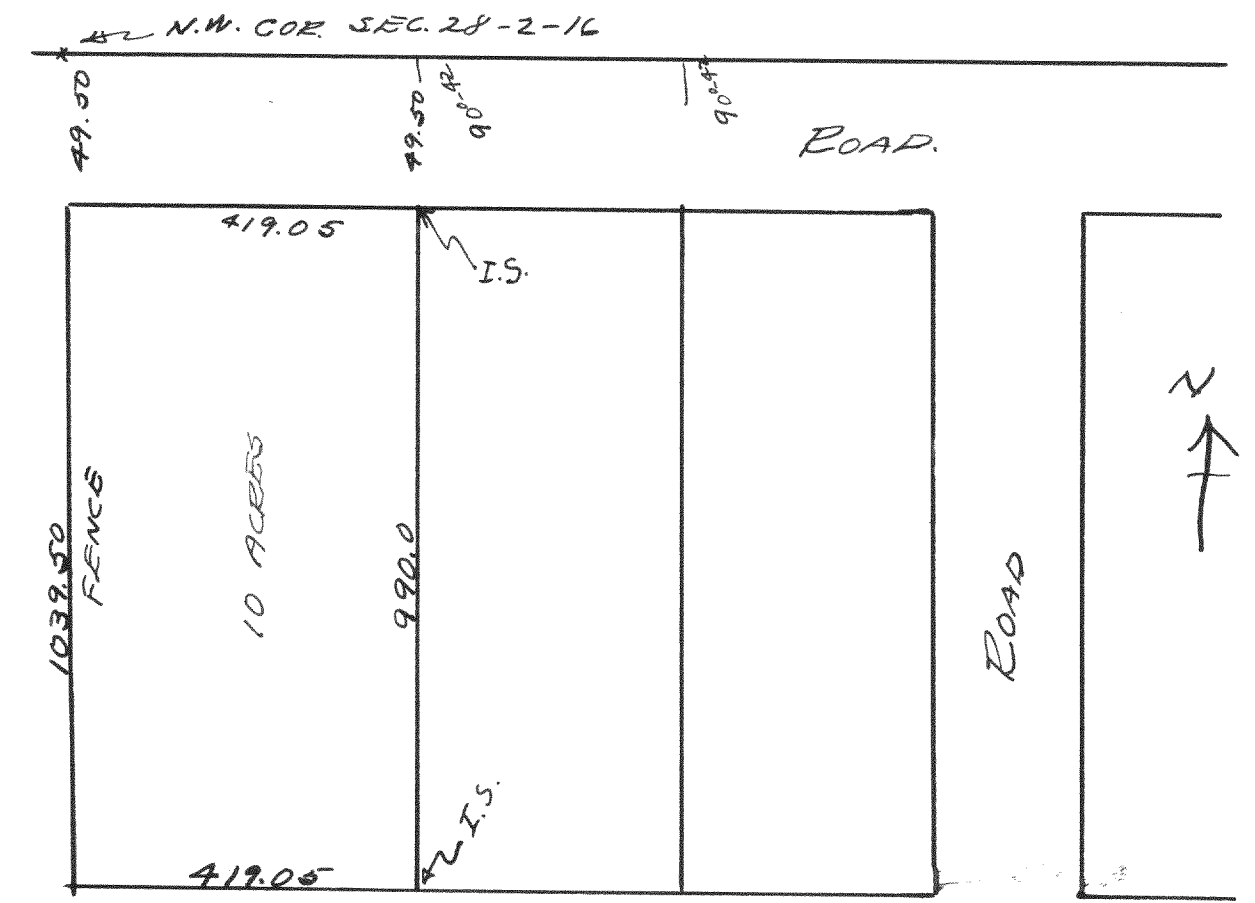
No. 852



Survey of lots 10 & 11 of Bailey's  
 Subd. in sec 27-2-16  
 April 9, 1938  
 Lloyd L. Jensen  
 by H.E.J.

NO. 853

275



Survey of part of NW 1/4 sec 28-2-16  
 April 10, 1938  
 Lloyd L. Jensen  
 by H.E.J.