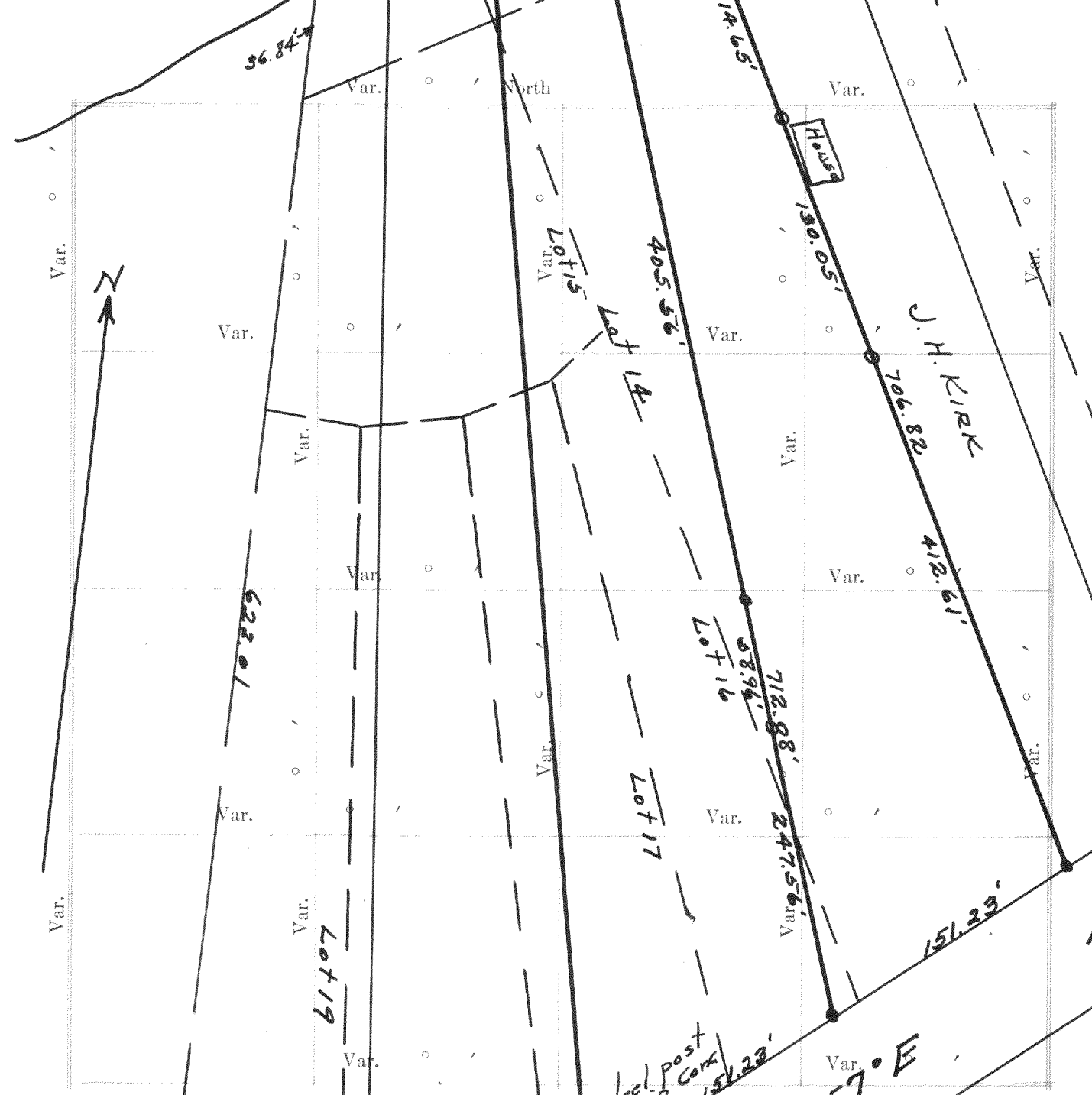


Record of Survey.

OF SECTION, QUARTER SECTION AND QUARTER QUARTER SECTION CORNERS

No. 555

Township \_\_\_\_\_ North of Range \_\_\_\_\_ of 4 Principal Meridian  
 as presented by the courses and distances on the following plat, and annexed field-notes of survey:  
 Established the center of the section at the point of intersection of STRAIGHT quarter lines  
 Established all quarter-quarter corners upon the section boundary at proportional distances between known section and quarter section corners, according to the original field-notes of the Government survey.  
 Established all lost corners at proportional distances between known corners, according to the original field notes of the Government survey.



Plat of Section \_\_\_\_\_ Township \_\_\_\_\_ North Range \_\_\_\_\_ of 4 Principal Meridian Scale  
 80 chains to 6 inches. The figures in red ink are the lengths of the lines as stated in the field-notes of the  
 Government survey.  
 Declination of the Magnetic Meridian from the True Meridian \_\_\_\_\_  
 Surveyed and sub-divided \_\_\_\_\_ A. D. 1 \_\_\_\_\_, in accordance  
 with the State Laws and Instructions of the Commissioner of the General Land office, and recorded on pages  
 \_\_\_\_\_ of Register in the County Clerk's office.  
 Witness my hand this \_\_\_\_\_ day of \_\_\_\_\_ A. D. 1 \_\_\_\_\_  
 \_\_\_\_\_ SURVEYOR.

N. C. MILLER CO. MFG. STATIONERS, MILWAUKEE WISCONSIN

No.	GOVERNMENT CORNERS				Subdivision Corners			
	Bearing Trees	In. Dia.	Courses they bear	Links Distant	Bearing Trees	In. Dia.	Courses they bear	Links Distant
1.								
2.								
3.								
4.								
5.								
6.								
7.								
8.								
9.								
10.								
11.								
12.								
13.								
14.								
15.								
16.								
17.								

*Plat of a survey of part of lots 14, 15, 16 and 17 of Barnes & Von Suesmiller Subd. Surveyed Sept. 12, 1933.*

*Lloyd S. Jensen  
Co. SUR.*

Subdivision Corners

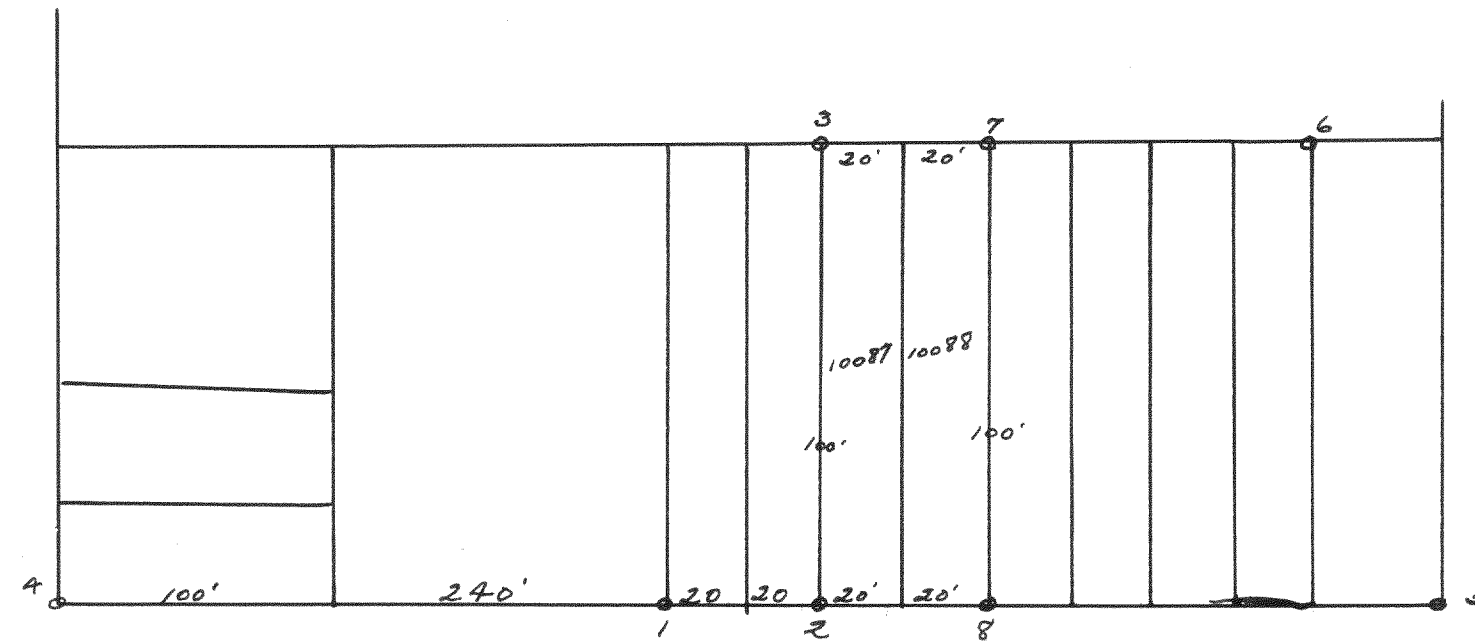
- No.
1. Center 1/4 Sec. Cor.
2. North 1/4-1/4s N. W. qr.,
3. East 1/4-1/4s N. W. qr.,
4. South 1/4-1/4s N. W. qr.,
5. West 1/4-1/4s N. W. qr.,
6. Center 1/4-1/4s N. W. qr.,
7. North 1/4-1/4s N. E. qr.,
8. East 1/4-1/4s N. E. qr.,
9. South 1/4-1/4s N. E. qr.,
10. Center 1/4-1/4s N. E. qr.,
11. East 1/4-1/4s S. E. qr.,
12. South 1/4-1/4s S. E. qr.,
13. West 1/4-1/4s S. E. qr.,
14. Center 1/4-1/4s S. E. qr.,
15. South 1/4-1/4s S. W. qr.,
16. West 1/4-1/4s S. W. qr.,
17. Center 1/4-1/4s S. W. qr.

NAMES OF SWORN ASSISTANTS

CHAINMEN \_\_\_\_\_ FLAGMEN \_\_\_\_\_ AXMEN \_\_\_\_\_

Measured from Finch School located in Section 11, T3N, R15E to the residence of George Vaden, found distance to be 13,007 feet. Measured from Finch school to the residence of Mrs. Meisner, found distance to be 13,804 feet or 2.61 miles.

Sept. 15, 1933  
Lloyd S. Jensen  
Co. Sur.



Salmwood Road

Found iron pipes at points numbered 1, 2, 3, 4, 5 & 6.

Placed pipes at points 7 & 8.

Lloyd S. Jensen  
Co. Sur.