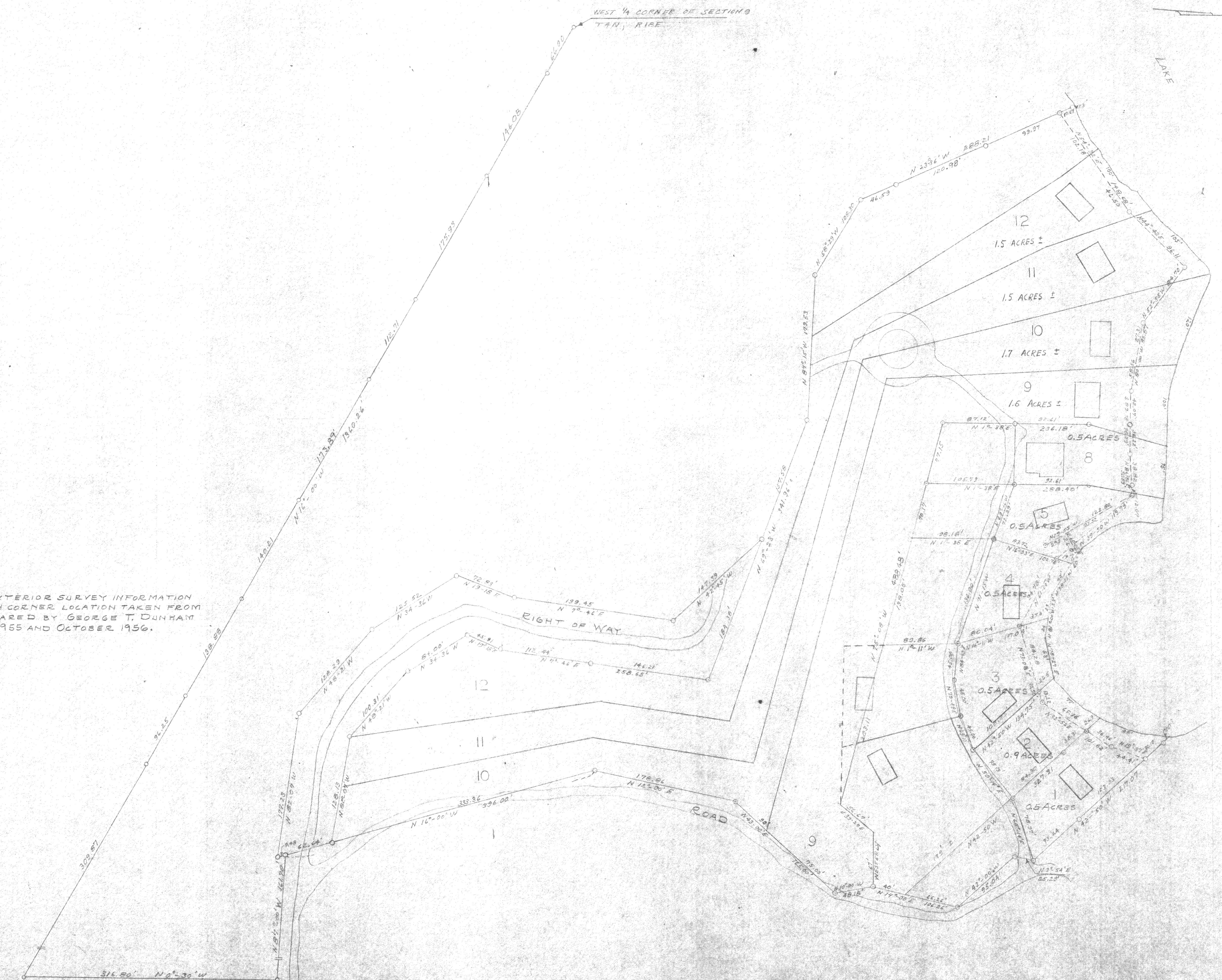


WEST 1/4 CORNER OF SECTION 9
T4N, R18E



NOTE: ALL EXTERIOR SURVEY INFORMATION
AND 1/4 SECTION CORNER LOCATION TAKEN FROM
A PLAT PREPARED BY GEORGE T. DUNHAM
DATED JULY 1955 AND OCTOBER 1956.



PLAT OF SURVEY FOR JAMES SCHUBERT		
LANDS IN THE WEST 1/2 OF SECTION 9, T4N, R18E, WALWORTH CO, WIS.		
DRAWN BY C.R.F.	JENSEN & JOHNSON CIVIL ENGINEERS ELKHORN, WIS.	SCALE: 1" = 60' REVISED:
CHECKED BY <i>Raymond Jensen</i>	DATE 6-20-67	SHEET NO. OF

ET-9-36
9-37
9-38
9-38A
9-38B
9-38C