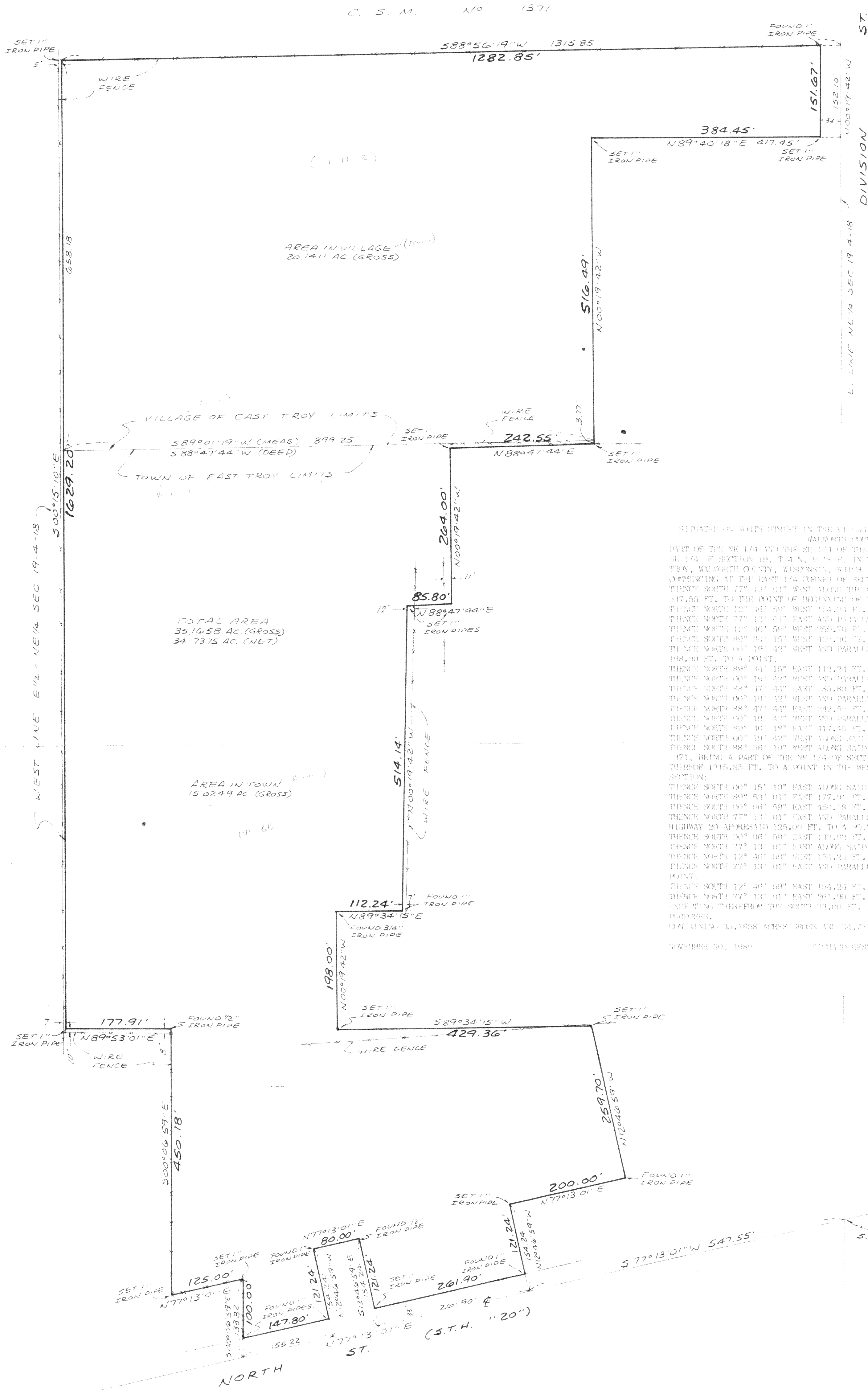


C. S. M. No 1371



SITUATED IN THE VILLAGE OF EAST TROY, IN THE TOWN OF EAST TROY, WALWORTH COUNTY, WISCONSIN, PART OF THE NE 1/4 AND THE SE 1/4 OF THE NE 1/4 AND PART OF THE SW 1/4 OF THE SE 1/4 OF SECTION 19, T. 4 N., R. 18 E., IN THE VILLAGE OF EAST TROY AND TOWN OF EAST TROY, WALWORTH COUNTY, WISCONSIN, WHICH IS LOCATED AND DESCRIBED AS FOLLOWS: COMMENCING AT THE EAST 1/4 CORNER OF SECTION 19;

THENCE SOUTH 77° 13' 01" WEST ALONG THE CENTER LINE OF STATE TRUNK HIGHWAY 20 547.55 FT. TO THE POINT OF BEGINNING OF THE LAND TO BE DESCRIBED;

THENCE NORTH 12° 40' 59" WEST 154.24 FT. TO A POINT;

THENCE NORTH 77° 13' 01" EAST AND PARALLEL WITH SAID CENTER LINE 80.00 FT. TO A POINT;

THENCE NORTH 15° 40' 59" WEST 250.70 FT. TO A POINT;

THENCE SOUTH 80° 54' 15" WEST 192.00 FT. TO A POINT;

THENCE NORTH 00° 10' 42" WEST AND PARALLEL WITH THE EAST LINE OF SAID NE 1/4 SECTION 198.00 FT. TO A POINT;

THENCE NORTH 89° 34' 19" EAST 114.24 FT. TO A POINT;

THENCE NORTH 00° 10' 42" WEST AND PARALLEL WITH SAID EAST LINE 514.14 FT. TO A POINT;

THENCE NORTH 88° 47' 44" EAST 85.80 FT. TO A POINT;

THENCE NORTH 00° 10' 42" WEST AND PARALLEL WITH SAID EAST LINE 241.00 FT. TO A POINT;

THENCE NORTH 88° 47' 44" EAST 142.55 FT. TO A POINT;

THENCE NORTH 00° 10' 42" WEST AND PARALLEL WITH SAID EAST LINE 314.40 FT. TO A POINT;

THENCE SOUTH 80° 54' 15" WEST ALONG SAID EAST LINE 150.00 FT. TO A POINT;

THENCE SOUTH 88° 56' 10" WEST ALONG SAID SOUTH LINE OF CERTIFIED SURVEY MAP NO. 1371, BEING A PART OF THE NE 1/4 OF SECTION 19, T. 4 N., R. 18 E., AND ITS EXTENSION THEREOF 1315.85 FT. TO A POINT IN THE WEST LINE OF THE EAST 1/2 OF SAID NE 1/4 SECTION;

THENCE SOUTH 00° 15' 10" EAST ALONG SAID WEST LINE 1620.20 FT. TO A POINT;

THENCE NORTH 80° 53' 01" EAST 177.91 FT. TO A POINT;

THENCE SOUTH 00° 15' 10" EAST 450.78 FT. TO A POINT;

THENCE NORTH 77° 13' 01" EAST AND PARALLEL WITH THE CENTER LINE OF STATE TRUNK HIGHWAY 20 APPROXIMATELY 125.00 FT. TO A POINT;

THENCE SOUTH 00° 06' 50" EAST 147.80 FT. TO A POINT ON SAID CENTER LINE;

THENCE NORTH 77° 13' 01" EAST ALONG SAID CENTER LINE 155.22 FT. TO A POINT;

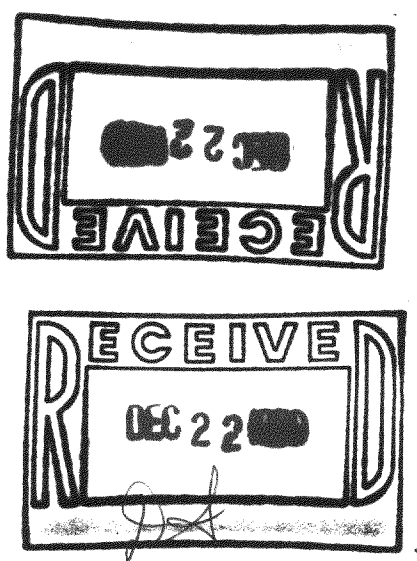
THENCE NORTH 12° 40' 59" WEST 154.24 FT. TO A POINT;

THENCE NORTH 77° 13' 01" EAST AND PARALLEL WITH SAID CENTER LINE 80.00 FT. TO A POINT;

THENCE SOUTH 12° 40' 59" EAST 154.24 FT. TO A POINT ON SAID CENTER LINE;

THENCE NORTH 77° 13' 01" EAST 341.00 FT. TO THE POINT OF BEGINNING, EXCEPTING THEREFROM THE SOUTH 80.00 FT. AND THE EAST 160.00 FT. TAKEN FOR HIGHWAY 20 APPROXIMATELY 16.1558 ACRES GROSS AND 14.7074 ACRES NET.

NOVEMBER 20, 1980 DENARD BERNESE, DISTRICT SURVEY NO. 150066-8



I Certify that I have surveyed the above described property (Property), and the above map is a true representation thereof and shows the size and location of the Property, its exterior boundaries, the location and dimensions of all visible structures thereon, boundary fences, apparent easements and roadways and visible encroachments, if any. This survey is made for the exclusive use of the present owners of the Property, and also those who purchase, mortgage, or guarantee the title thereto, within one (1) year from date hereof.

Kenneth E. Berne
SURVEYOR

national survey engineering
4125 north 124th street • brookfield, wisconsin, 53008-0444
phone 414 / 781-1000

THIS IS ORIGINAL PRINT ONLY IF SEAL IS IMPRINTED IN RED

WISCONSIN
KENNETH E. BERNE
S-107
BROOKFIELD
WIS.
LAND SURVEYOR

PCT 112
ENP 62
418-682