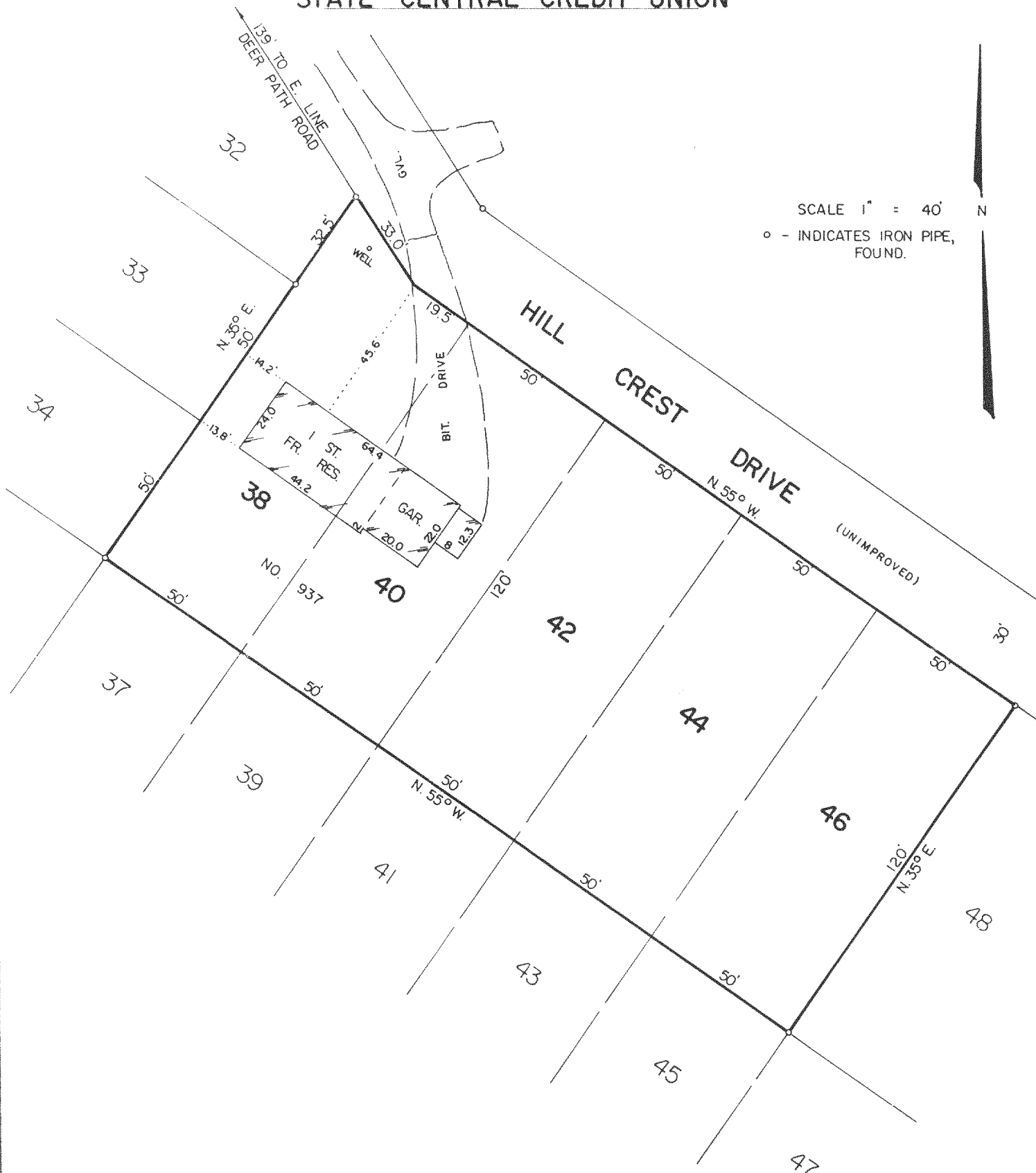


FOR

RECEIVED
JUL 1 1986
W.S.



A circular seal for the Wisconsin Land Surveyor. The outer ring contains the text "WISCONSIN" at the top and "LAND SURVEYOR" at the bottom, separated by two five-pointed stars. The center of the seal contains the text "RONALD H. ZIMMERMAN", "S - 888", "WAUKESHA.", and "WIS." stacked vertically.

418-514-2

POT-12B, 14, 16, 17A, 18