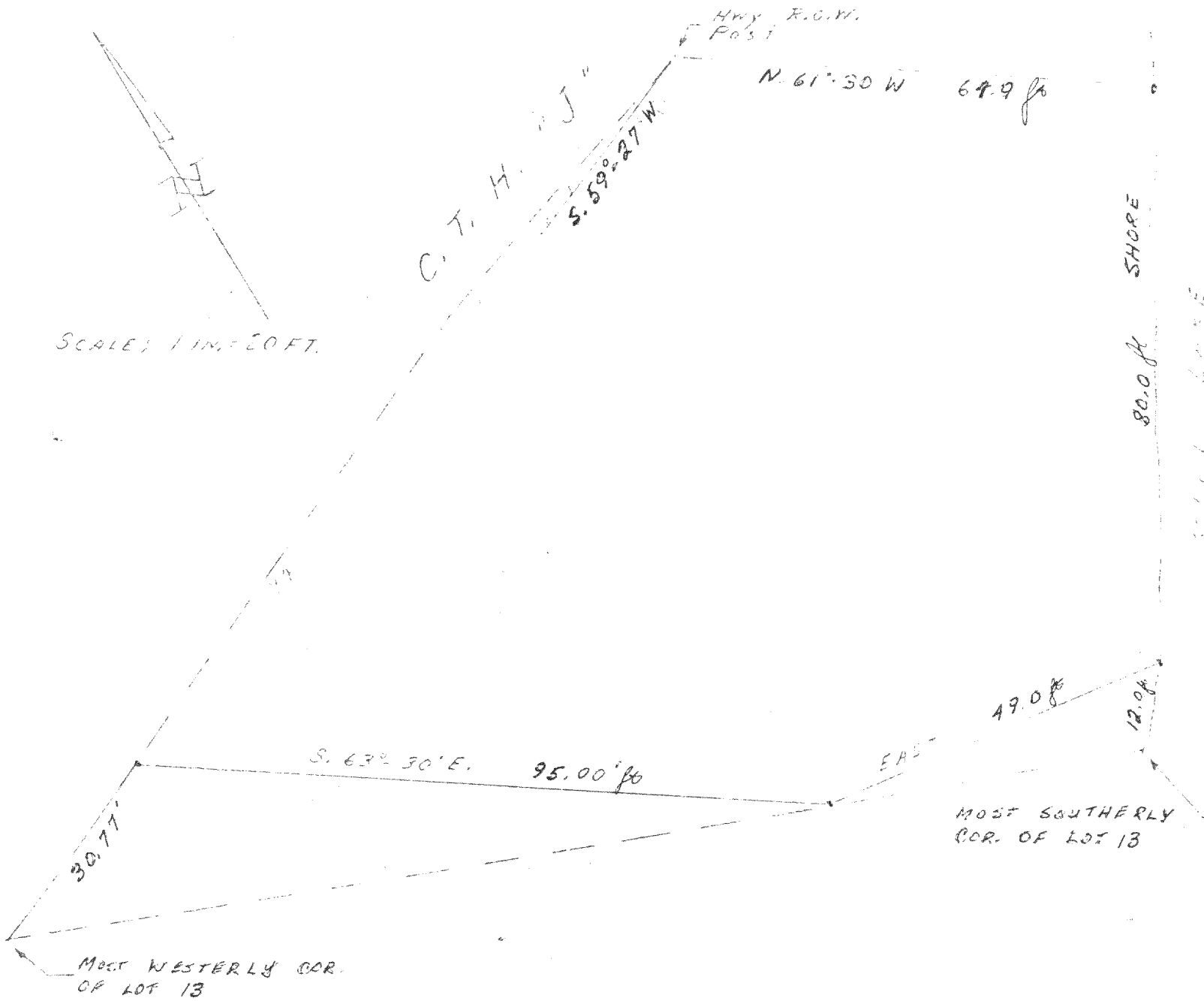


418-331

PLAT OF FRANK FUZER PROPERTY
ON
County Trunk Highway "J"
in the
N.W. 1/4 Section 4, T.4 N., R.18 E.
Walworth Co., Wis.

August 23, 1972



Note: This Plat was prepared by Wisconsin Land Surveyors, Ltd. using the "Description for Frank Fuzer" prepared by Lloyd Jensen, County Surveyor dated Dec. 30, 1959 and from a reproduction of a plat of the area supplied to us by Mr. Fuzer.

J. C. Funder