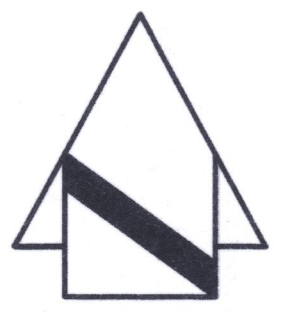
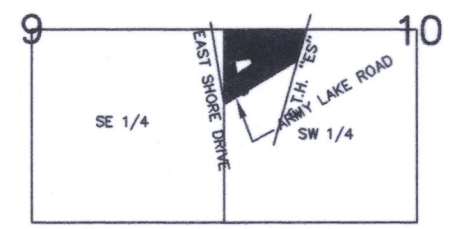
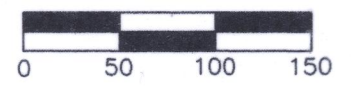


718-9821

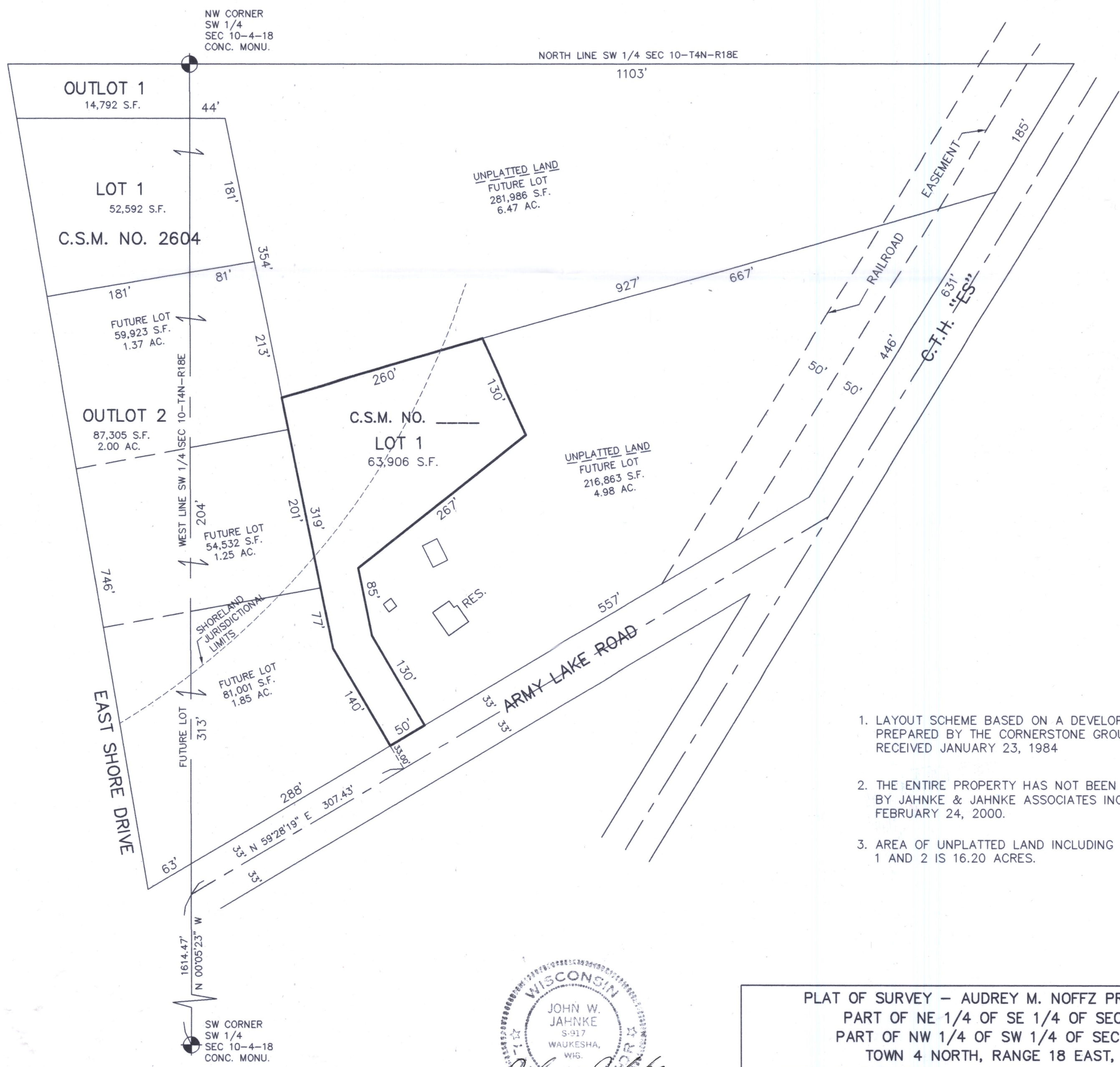
718-9821



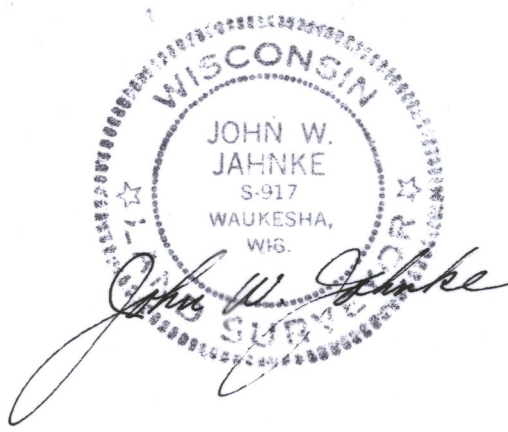
SCALE: 1"=100'



VICINITY SKETCH
SW 1/4 SEC 10-4-18
SE 1/4 SEC 9-4-18
SCALE 1" = 2640'



1. LAYOUT SCHEME BASED ON A DEVELOPMENT PLAN PREPARED BY THE CORNERSTONE GROUP, INC. RECEIVED JANUARY 23, 1984
2. THE ENTIRE PROPERTY HAS NOT BEEN SURVEYED BY JAHNKE & JAHNKE ASSOCIATES INC. AS OF FEBRUARY 24, 2000.
3. AREA OF UNPLATTED LAND INCLUDING OUTLOTS 1 AND 2 IS 16.20 ACRES.



PLAT OF SURVEY - AUDREY M. NOFFZ PROPERTY PART OF NE 1/4 OF SE 1/4 OF SEC 9 PART OF NW 1/4 OF SW 1/4 OF SEC 10 TOWN 4 NORTH, RANGE 18 EAST, TOWN OF EAST TROY, WALWORTH COUNTY, WISCONSIN	
JAHNKE & JAHNKE ASSOCIATES INC. PLANNERS & PROFESSIONAL ENGINEERS 711 W. MORELAND BLVD.-WAUKESHA, WI. 53188 TEL.No.(262) 542-5797 FAX (262) 542-7698	
SCALE: 1" = 100'	DATE: FEBRUARY 24, 2000
DRAWN BY: R.J.B. CHECKED BY: J.W.J.	FILE NO.: WALWORTH 69
BOOK NO.:	JOB: S-5582 SHEET 1 OF 1

PA3225-1

FILE NAME: S5582CSM.DWG