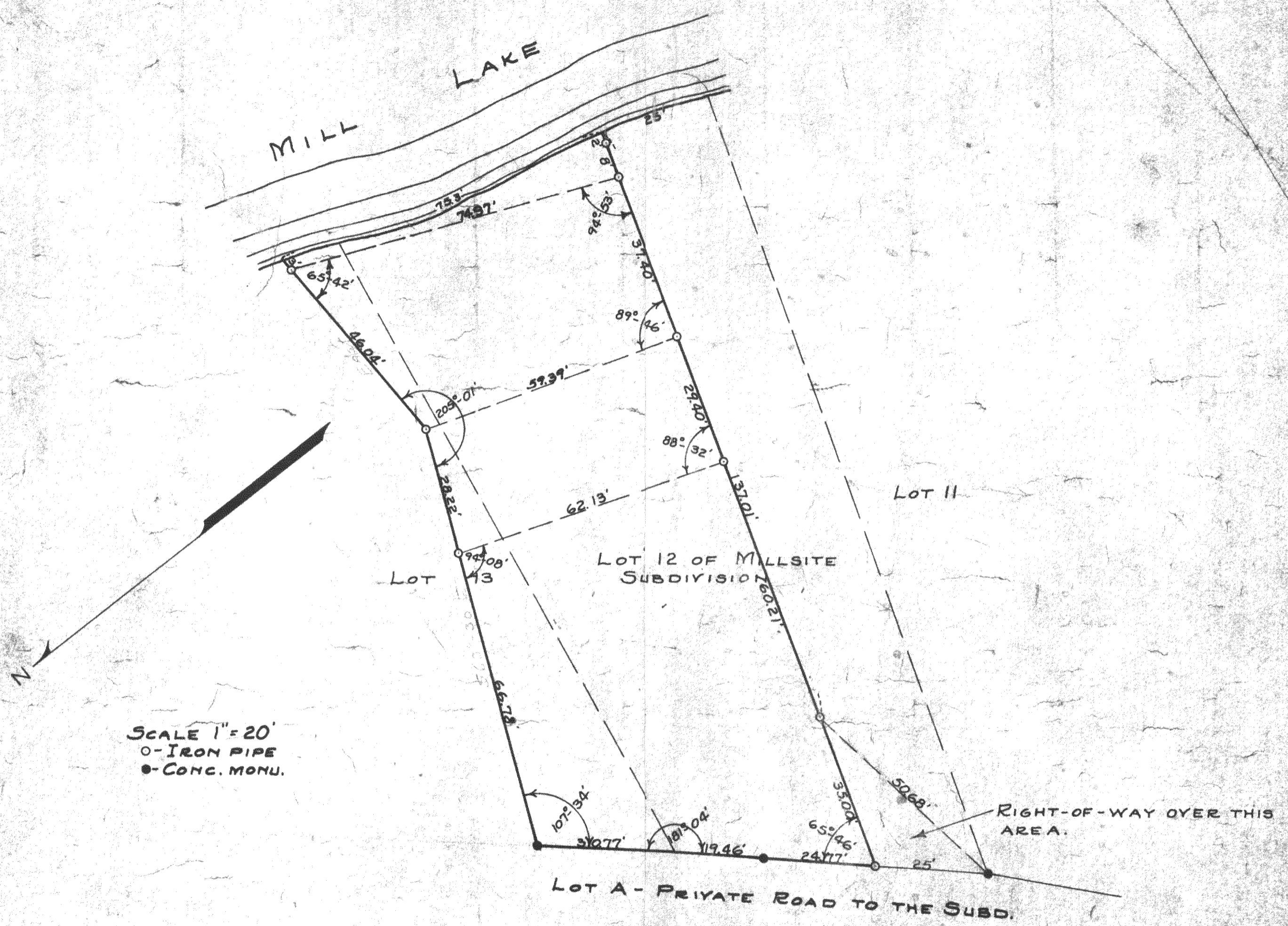


MILL LAKE



SCALE 1" = 20'
○ - IRON PIPE
● - CONC. MONU.

PLAT OF SURVEY OF PART OF LOTS 12 AND 13 OF
MILLSITE SUBDIVISION, A SUBDIVISION LOCATED IN
SECTION 4, T4N R18E OF WALWORTH COUNTY, WISCONSIN.
OCT. 1945
Floyd J. Jensen
COUNTY SURVEYOR

MI-7 + MI-8