

# LOT LINE ADJUSTMENT

**RSV**  
ENGINEERING, INC.

Engineers • Land Surveyors • Environmental Scientists  
801 MAIN STREET MUKWONAGO, WISCONSIN 53149 (262) 363-2004

FOR: CLINT PARSON

DATE: 08/19/03

DATE: 08/28/03 REVISED LEGAL

NOV 18 2003

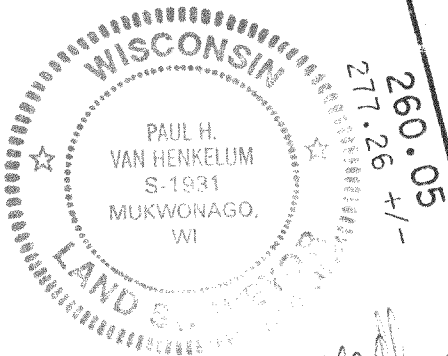
KW

2" IP FOUND  
2.50' SOUTH OF  
CORNER

SCALE 1" = 20'

BEULAH HEIGHTS  
PART OF  
LOT 134

BEULAH HEIGHTS  
PART OF  
LOT 135



LINE #	BEARING	DISTANCE
(1)	N88°26'40"E	6.85
(2)	N02°02'53"W	14.00
(3)	N85°41'05"W	6.50
(4)	N04°18'55"E	19.00
(5)	N85°41'05"W	10.00
(6)	N14°09'52"W	8.00
(7)	S14°09'52"E	12.70+/-

## LEGEND

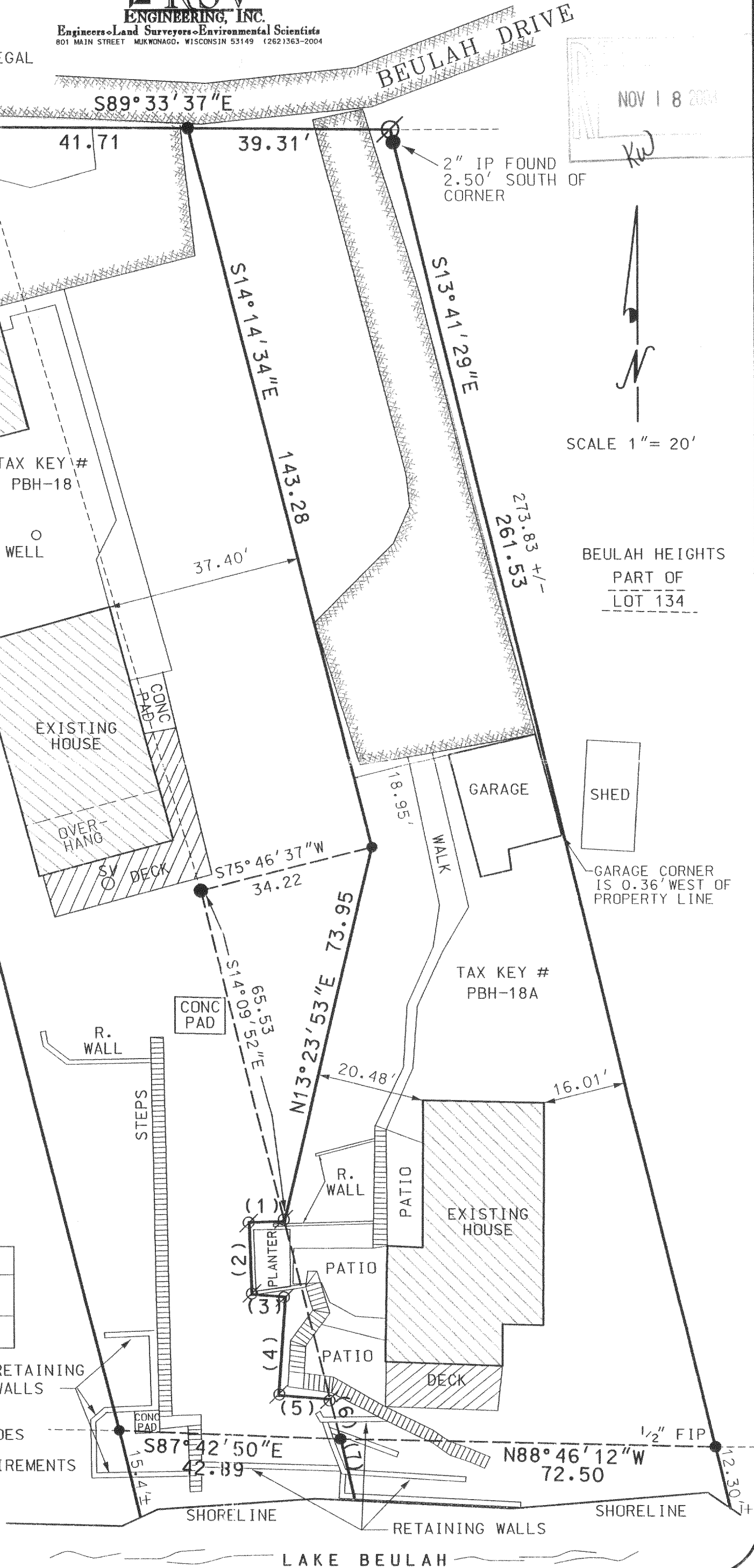
●	IRON PIPE FOUND
⊗	1"x18" IRON PIPE SET @ 1.13 POUNDS PER S.F.
▨	PAVEMENT

NOTE:  
THIS LOT LINE ADJUSTMENT DOES  
NOT CREATE ANOTHER LOT AND  
BOTH LOTS MEET ZONING REQUIREMENTS

RSV# 03-262  
SHEET 1 OF 2

PBH-18  
PBH-18A

418-1725



# LOT LINE ADJUSTMENT

**RSV**  
**ENGINEERING, INC.**  
Engineers • Land Surveyors • Environmental Scientists  
801 MAIN STREET MUKWONAGO, WISCONSIN 53149 (262)363-2004

FOR: CLINT PARSON

DATE: 08/19/03

DATE: 08/28/03 REVISED LEGAL

## DESCRIPTIONS:

### DESCRIPTION OF ADJUSTED TAX KEY # PBH-18A:

PART OF LOT 134 OF THE PLAT OF BEULAH HEIGHTS SUBDIVISION, LOCATED IN SECTIONS 7,8,17, AND 18, TOWN 4 NORTH, RANGE 18 EAST, WALWORTH COUNTY, WISCONSIN, DESCRIBED AS FOLLOWS: COMMENCING AT THE NORTHWESTERLY CORNER OF SAID LOT 134; THENCE S89°33'37"E, A DISTANCE OF 41.71' TO THE POINT OF BEGINNING; THENCE S14°14'34"E, A DISTANCE OF 143.28' TO A POINT; THENCE S13°23'53"W A DISTANCE OF 73.95' TO A POINT; THENCE S88°26'40"W, A DISTANCE OF 6.85' TO A POINT; THENCE S02°02'53"E, A DISTANCE OF 14.00' TO A POINT THENCE S85°41'05"E, A DISTANCE OF 6.50' TO A POINT; THENCE S04°18'55"W, A DISTANCE OF 19.00' TO A POINT; THENCE S85°41'05"E, A DISTANCE OF 10.00' TO A POINT; THENCE S14°09'52"E, A DISTANCE OF 8.00' TO A POINT A MEANDER LINE ALONG THE SHORE OF LAKE BEULAH; THENCE S88°46'12"E ALONG SAID MEANDER LINE, A DISTANCE OF 72.50' TO A POINT; THENCE N13°41'29"W, A DISTANCE OF 261.53' TO A POINT; THENCE N89°33'37"W, A DISTANCE OF 39.31' TO THE POINT OF BEGINNING. THE ABOVE PARCEL INCLUDES LAND BETWEEN THE MEANDER LINE AND THE ORDINARY HIGH WATER LINE OF LAKE BEULAH. SAID PARCEL CONTAINS 0.29 ACRES.

### DESCRIPTION OF LAND TO BE ADDED TO TAX KEY # PBH-18A:

PART OF LOT 134, TAX KEY #PBH-18 OF THE PLAT OF BEULAH HEIGHTS SUBDIVISION, LOCATED IN SECTIONS 7,8,17, AND 18, TOWN 4 NORTH, RANGE 18 EAST, WALWORTH COUNTY, WISCONSIN, DESCRIBED AS FOLLOWS: COMMENCING AT THE NORTHWESTERLY CORNER OF SAID LOT 134; THENCE S89°33'37"E, A DISTANCE OF 41.71' TO A POINT; THENCE S14°14'34"E, A DISTANCE OF 143.28' TO A POINT; THENCE S13°23'53"W, A DISTANCE OF 73.95' TO THE POINT OF BEGINNING; THENCE S88°26'40"W, A DISTANCE OF 6.85' TO A POINT; THENCE S02°02'53"E, A DISTANCE OF 14.00' TO A POINT THENCE S85°41'05"E, A DISTANCE OF 6.50' TO A POINT; THENCE S04°18'55"W, A DISTANCE OF 19.00' TO A POINT; THENCE S85°41'05"E, A DISTANCE OF 10.00' TO A POINT; THENCE N14°09'52"W, A DISTANCE OF 35.44' TO THE POINT OF BEGINNING. SAID LAND TO BE ADDED CONTAINS 0.01 ACRES.

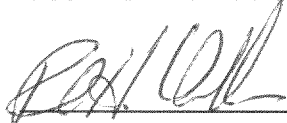
### DESCRIPTION OF ADJUSTED TAX KEY # PBH-18:

PART OF LOT 134 AND 135 OF THE PLAT OF BEULAH HEIGHTS SUBDIVISION, LOCATED IN SECTIONS 7,8,17, AND 18, TOWN 4 NORTH, RANGE 18 EAST, WALWORTH COUNTY, WISCONSIN, DESCRIBED AS FOLLOWS: BEGINNING AT THE NORTHWESTERLY CORNER OF SAID LOT 134; THENCE S89°33'37"E, A DISTANCE OF 41.71' TO A POINT; THENCE S14°14'34"E, A DISTANCE OF 143.28' TO A POINT; THENCE S13°23'53"W, A DISTANCE OF 73.95' TO A POINT; THENCE S88°26'40"W, A DISTANCE OF 6.85' TO A POINT; THENCE S02°02'53"E, A DISTANCE OF 14.00' TO A POINT; THENCE S85°41'05"E, A DISTANCE OF 6.50' TO A POINT; THENCE S04°18'55"W, A DISTANCE OF 19.00' TO A POINT; THENCE S85°41'05"E, A DISTANCE OF 10.00' TO A POINT; THENCE S14°09'52"E, A DISTANCE OF 8.00' TO A POINT A MEANDER LINE ALONG THE SHORE OF LAKE BEULAH; N87°42'50"W ALONG SAID MEANDER LINE, A DISTANCE OF 42.89' TO A POINT; THENCE N14°15'57"W, A DISTANCE OF 260.05' TO A POINT; THENCE S89°14'55"E, A DISTANCE OF 36.49' TO THE POINT OF BEGINNING. THE ABOVE PARCEL CONTAINS LAND BETWEEN THE MEANDER LINE AND THE ORDINARY HIGH WATER LINE OF LAKE BEULAH. SAID PARCEL CONTAINS 0.38 ACRES.

### DESCRIPTION OF LAND TO BE ADDED TO TAX KEY # PBH-18:

PART OF LOT 134 OF THE PLAT OF BEULAH HEIGHTS SUBDIVISION, LOCATED IN SECTIONS 7,8,17, AND 18, TOWN 4 NORTH, RANGE 18 EAST, WALWORTH COUNTY, WISCONSIN, DESCRIBED AS FOLLOWS: COMMENCING AT THE NORTHWESTERLY CORNER OF SAID LOT 134; THENCE S89°33'37"E, A DISTANCE OF 41.71' TO A POINT; THENCE S14°14'34"E, A DISTANCE OF 143.28' TO THE POINT OF BEGINNING; THENCE S13°23'53"W, A DISTANCE OF 73.95' TO A POINT; THENCE N14°09'52"W, A DISTANCE OF 65.53' TO A POINT; THENCE N75°46'37"E, A DISTANCE OF 34.22' TO THE POINT OF BEGINNING. SAID LAND TO BE ADDED CONTAINS 0.03 ACRES.

I PAUL H. VAN HENKELUM R.L.S. # 1931 HEREBY CERTIFY THAT THIS SURVEY WAS MADE IN ACCORDANCE WITH THE MINIMUM STANDARDS FOR PROPERTY SURVEYS (CHAPTER A-E7) STATE OF WISCONSIN AND HAS BEEN PREPARED UNDER MY DIRECTION AND CONTROL AND IS CORRECT TO THE BEST OF MY KNOWLEDGE AND BELIEF.



PAUL H. VAN HENKELUM, R.L.S. 1931  
RSV# 03-262

