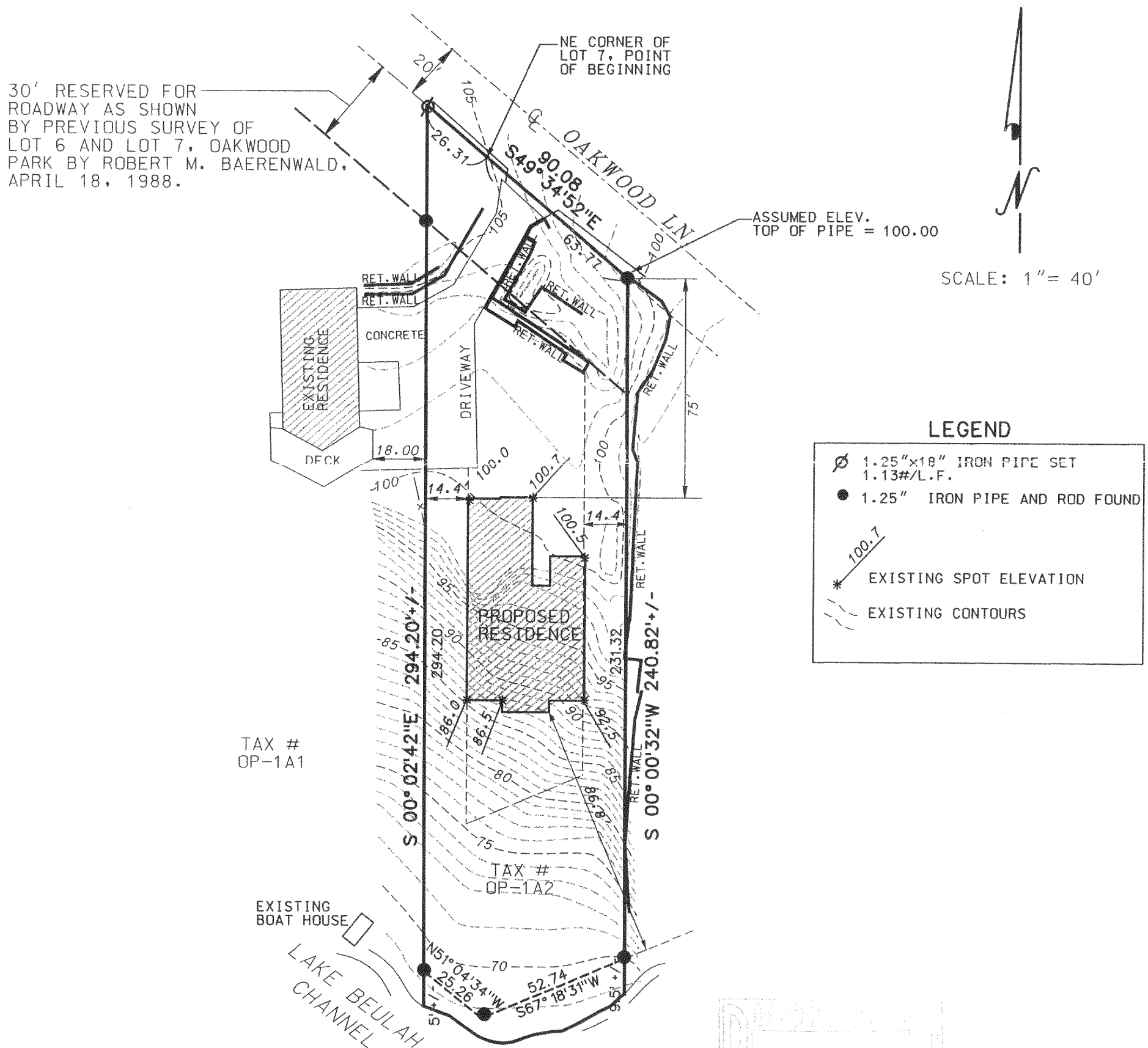


Engineers • Land Surveyors • Environmental Scientists
801 MAIN STREET MUKWONAGO, WISCONSIN 53149 (262)363-2004

DATE:03/10/2003

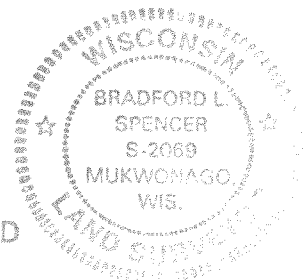
THE EAST 20 FEET OF LOT 7, AND PART OF LOTS 8 AND 9, OF OAKWOOD PARK SUBDIVISION, BEING LOCATED IN THE NE¹/₄ OF SECTION 8, TOWN 4 NORTH, RANGE 18 EAST, TOWN OF EAST TROY, WALWORTH COUNTY, WISCONSIN, MORE PARTICULARLY DESCRIBED AS FOLLOWS:
BEGINNING AT THE NORTHEAST CORNER OF LOT 7, THENCE S49°34'52"E, A DISTANCE OF 26.31'; THENCE S00°02'42"E, A DISTANCE OF 294.20' TO POINT; THENCE N51°04'34"W A DISTANCE OF 25.26' TO A POINT; THENCE S67°18'31"W, A DISTANCE OF 52.74' TO A POINT; THENCE N00°00'32"E, A DISTANCE OF 231.32' TO A POINT; THENCE N49°34'52"E, A DISTANCE OF 63.77' TO THE POINT OF BEGINNING. ALSO INCLUDING LANDS BETWEEN THE MEANDER LINE AND THE HIGH WATER LINE OF LAKE BEULAH. SAID PARCEL CONTAINING 0.426 ACRES, MORE OR LESS.



BRADFORD L. SPENCER, R.L.S. 2069
RSV#03047A

MAY 1 2003
[Signature]

THIS IS ORIGINAL
PRINT ONLY IF
SEAL IS IMPRINTED
IN RED



POP-1A2

418-1650