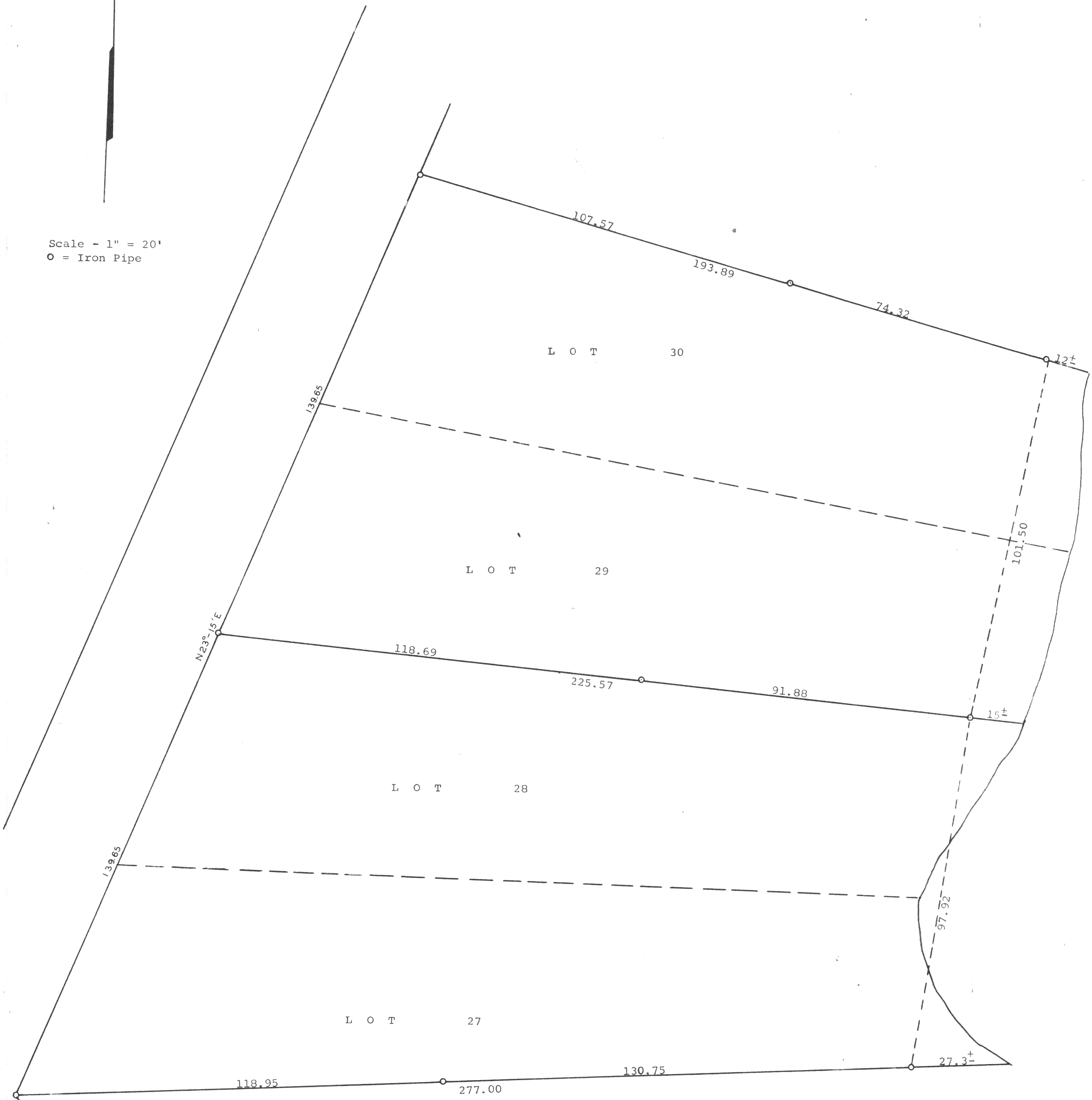


GEORGE T. DUNHAM
SURVEYING & SUBDIVIDING
DELAVAN, WISCONSIN

N



Scale - 1" = 20'
O = Iron Pipe



Plat of survey of Lots 27-30 Inclusive, Block 1, Thansland, located in
Section 25, T 4 N R 16 E, Walworth County, Wisconsin
July 1963

George T. Dunham
George T. Dunham, Surveyor