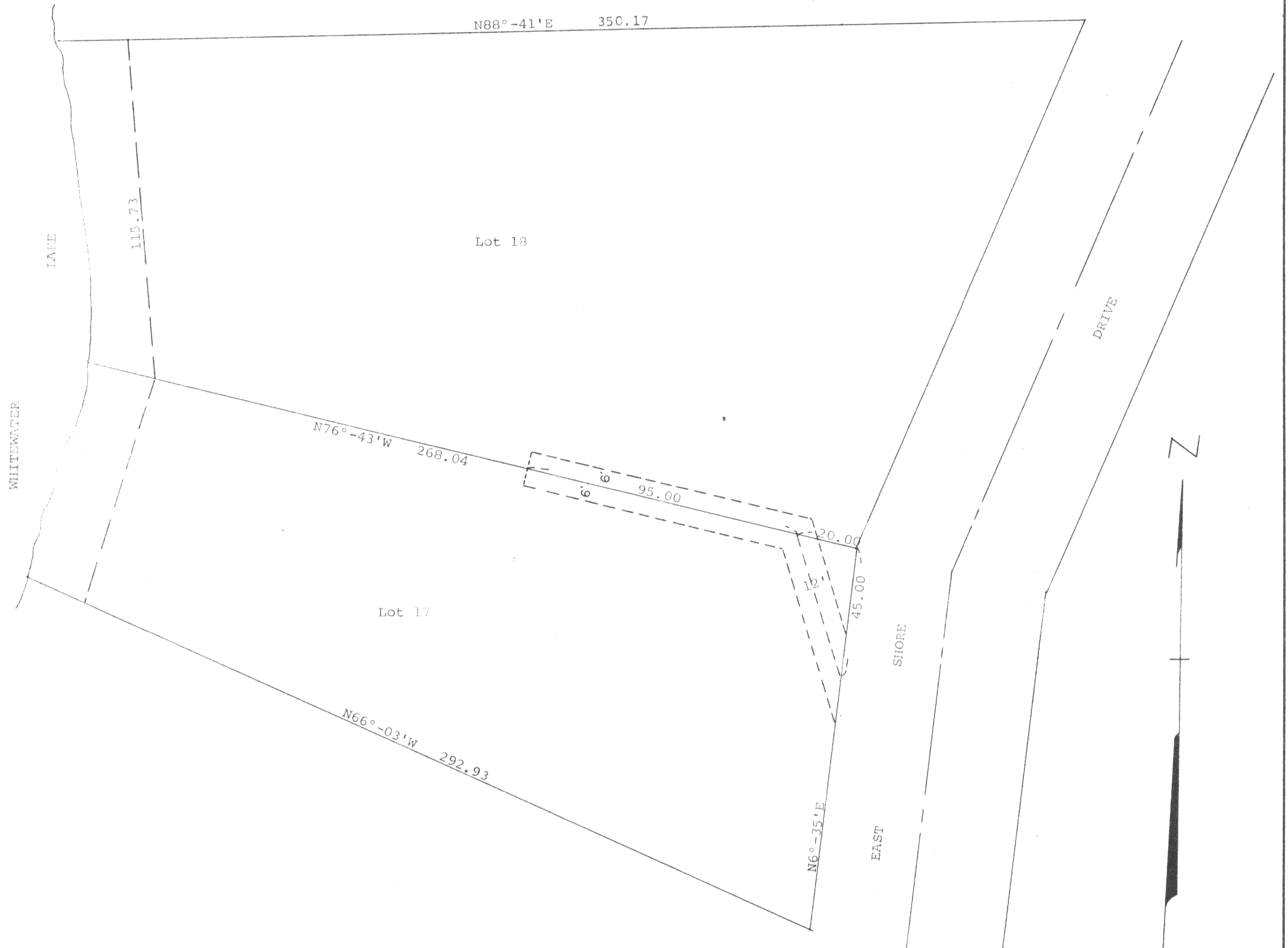


GEORGE T. DUNHAM  
 SURVEYING & SUBDIVIDING  
 DELAVAN, WISCONSIN



Scale - 1" = 30'

Lots 17 and 18, Thorne Heights, Section 35,  
 T 4 N, R 15 E, Walworth County, Wisconsin.  
 October 28, 1970

*George T. Dunham*  
 George T. Dunham, Surveyor

TH-17  
 + Cont. Survey 78  
 of 142