

# METROPOLITAN ENGINEERING, INC.

ENGINEERS - LAND SURVEYORS  
20875 CROSSROADS CIRCLE, SUITE 150 WAUKESHA, WI 53186  
(262) 782-2221 FAX 782-4426

## PLAT OF SURVEY

PREPARED FOR: ASPEN HOMES

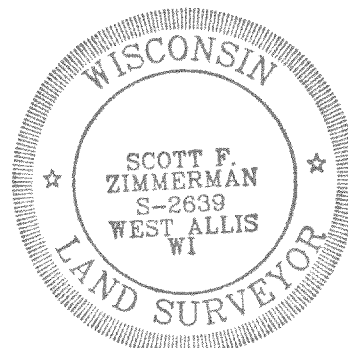
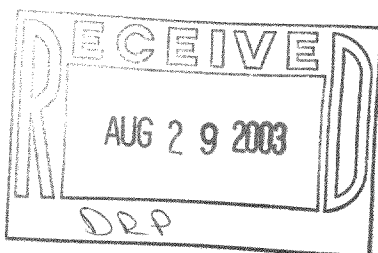
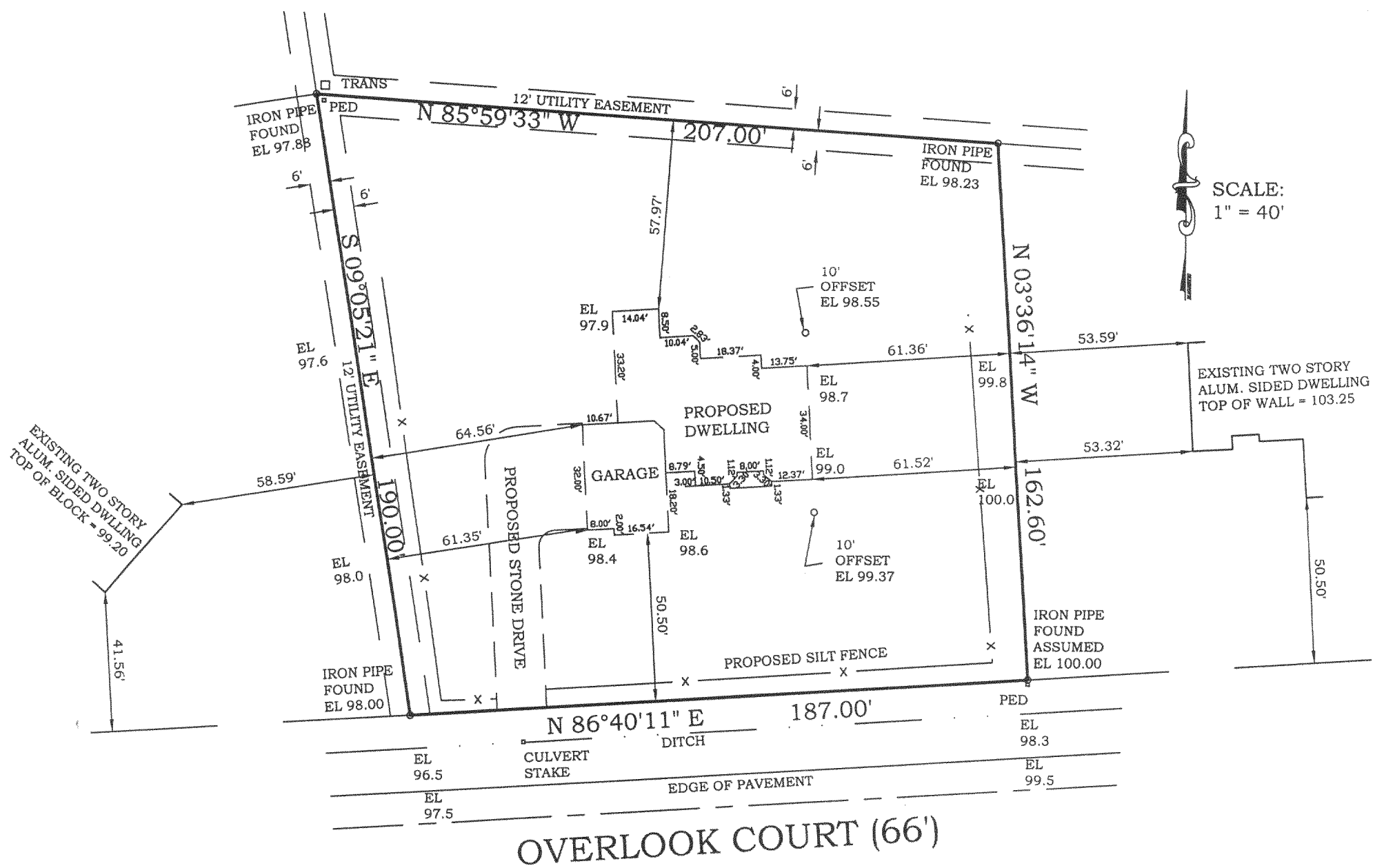
LOCATION: Overlook Court, La Fayette, Wisconsin

LEGAL DESCRIPTION: LOT 24 EVERGREEN ESTATES, a subdivision located in the SW 1/4 of the NW 1/4 and the SW 1/4 of the SW 1/4 and the NW 1/4 of the SW 1/4 and the NE 1/4 of the SW 1/4 and the SE 1/4 of the SW 1/4 of Section 18, and the SW 1/4 of the NW 1/4 and the NW 1/4 of the NW 1/4 and the NE 1/4 of the NW 1/4 and the SE 1/4 of the NW 1/4 and the NW 1/4 of the NE 1/4 of Section 19, T 3 N, R 17 E, Town of La Fayette, Walworth County, Wisconsin.

August 15, 2003

August 20, 2003 (Stakeout)

Survey No. 203376



I hereby certify that I have surveyed the above described property and the above map is a true representation thereof and shows the size and location of the property, its exterior boundaries, the location of all visible structures and dimensions of all principal buildings thereon, boundary fences, apparent easements, roadway and visible encroachments, if any. This survey is made for the present owners of the property, and also those who purchase, mortgage, or guarantee, the title thereto within one (1) year from date hereof.

Signed

KE-24