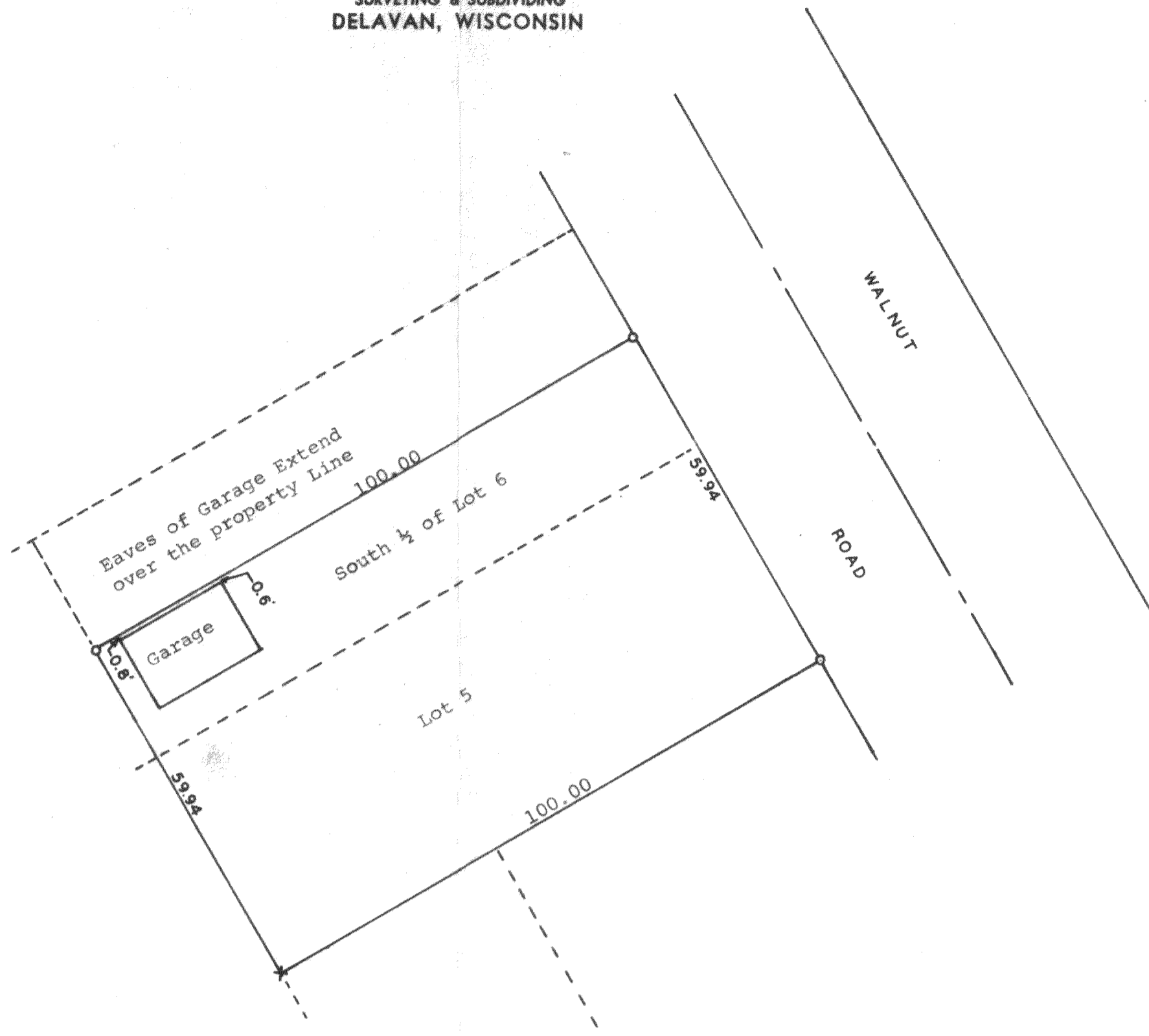


GEORGE T. DUNHAM
SURVEYING & SUBDIVIDING
DELAVER, WISCONSIN



Scale - 1" = 20'
O = Iron Pipe
x = Cross in Concrete

Plat of survey of Lot 5 and the South 1/4 of Lot 6
in Block 59 of Interlaken, a subdivision located in
Section 11, T 3 N, R 16 E, Walworth County, Wisconsin.
August 23, 1972

George T. Dunham
George T. Dunham, Surveyor

