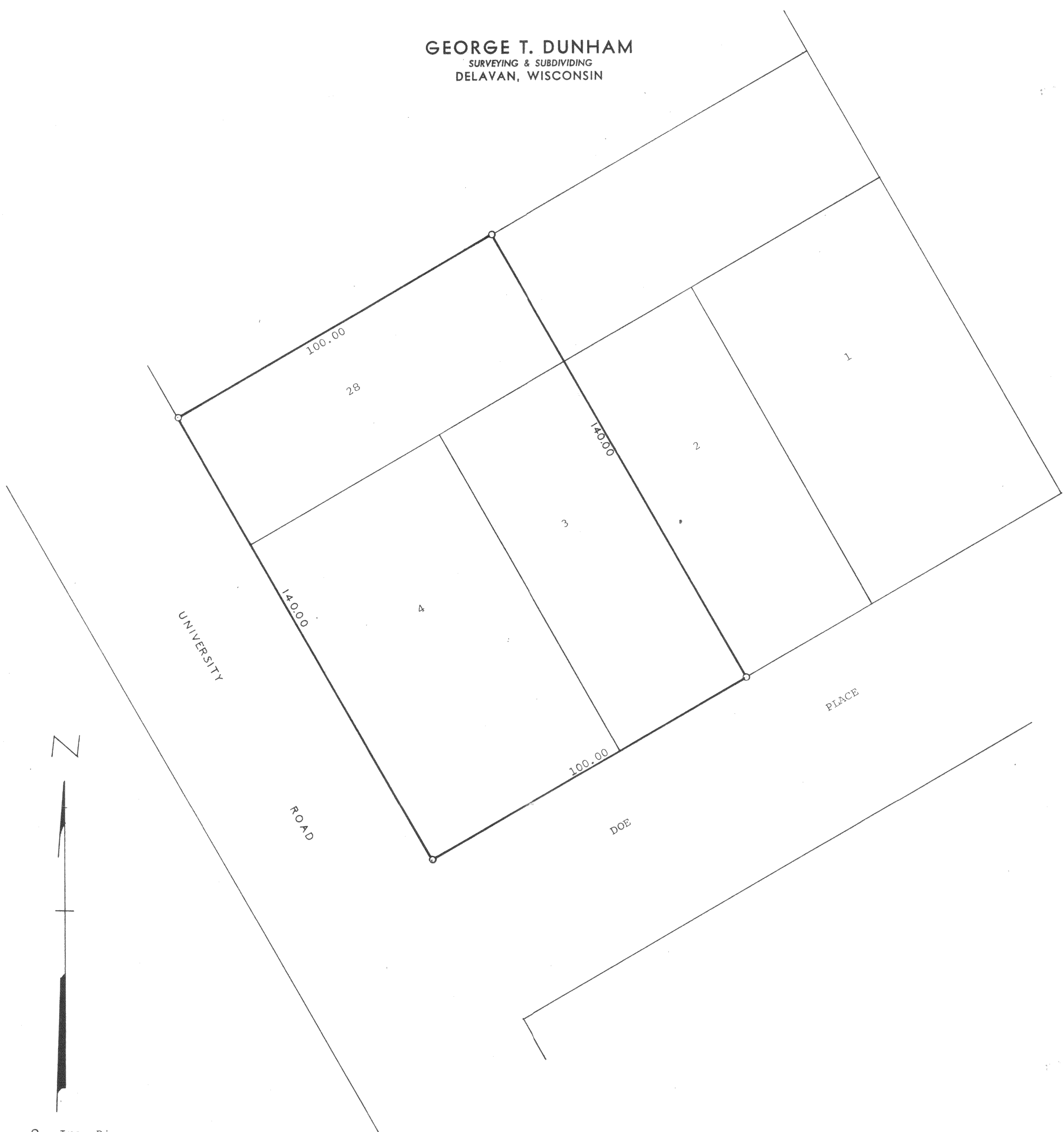


GEORGE T. DUNHAM
SURVEYING & SUBDIVIDING
DELAVER, WISCONSIN



○ = Iron Pipe
Scale - 1" = 20'

Plat of survey of Lots 3, 4, and 28 in Block 59 according
to the 4th Map of Interlaken, a subdivision located in the
Town of Sugar Creek, Walworth County, Wisconsin.
September 29, 1970

George T. Dunham
George T. Dunham, Surveyor