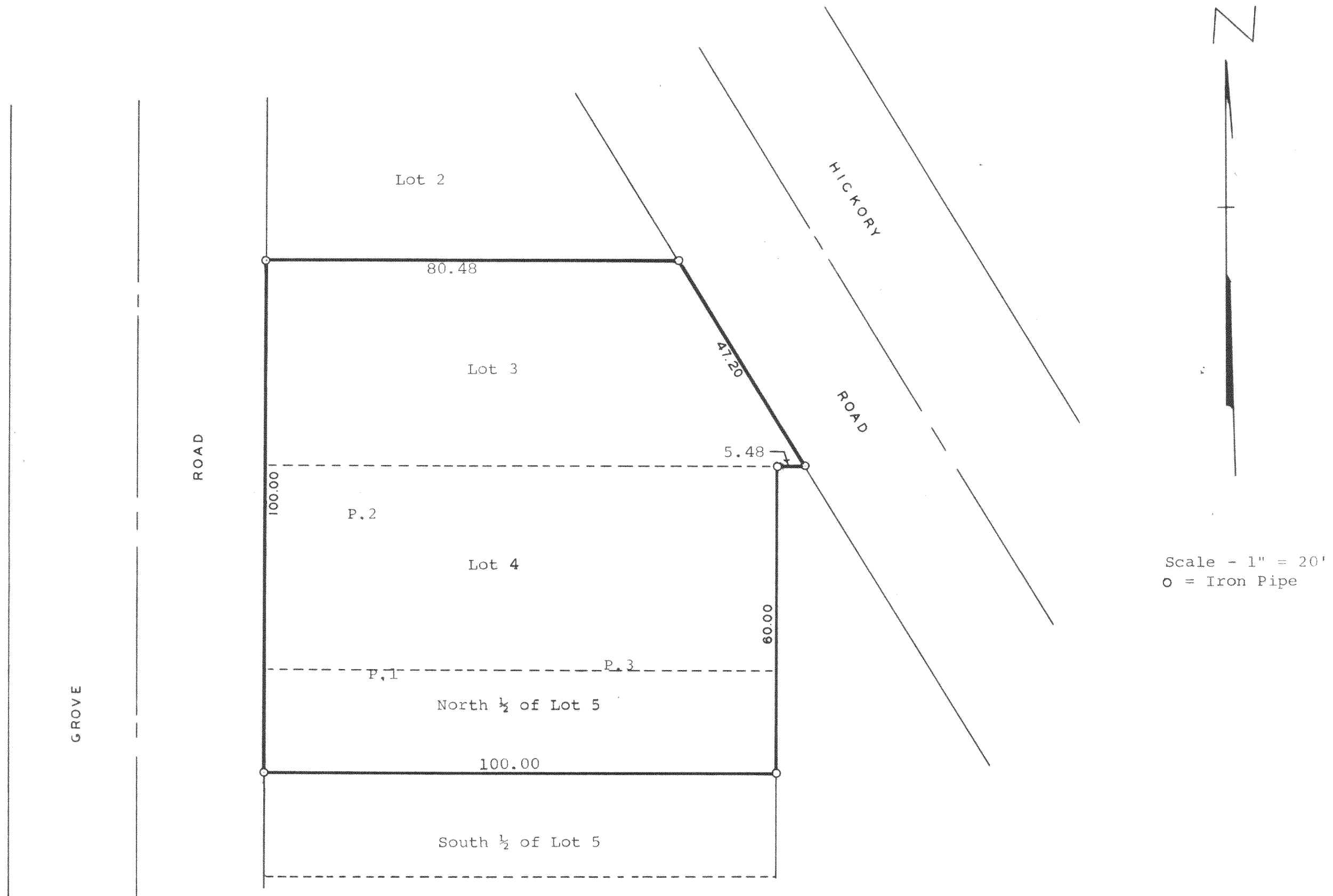


GEORGE T. DUNHAM
 SURVEYING & SUBDIVIDING
 DELAVAN, WISCONSIN



Plat of survey of Lots 3, 4, and the North 1/2 of Lot 5, Block 10 of Interlaken, a subdivision located in the Town of Sugar Creek, Walworth County, Wisconsin. December 9, 1966
 Revised 4/28/67 George T. Dunham
 George T. Dunham, Surveyor

316-35

61-93