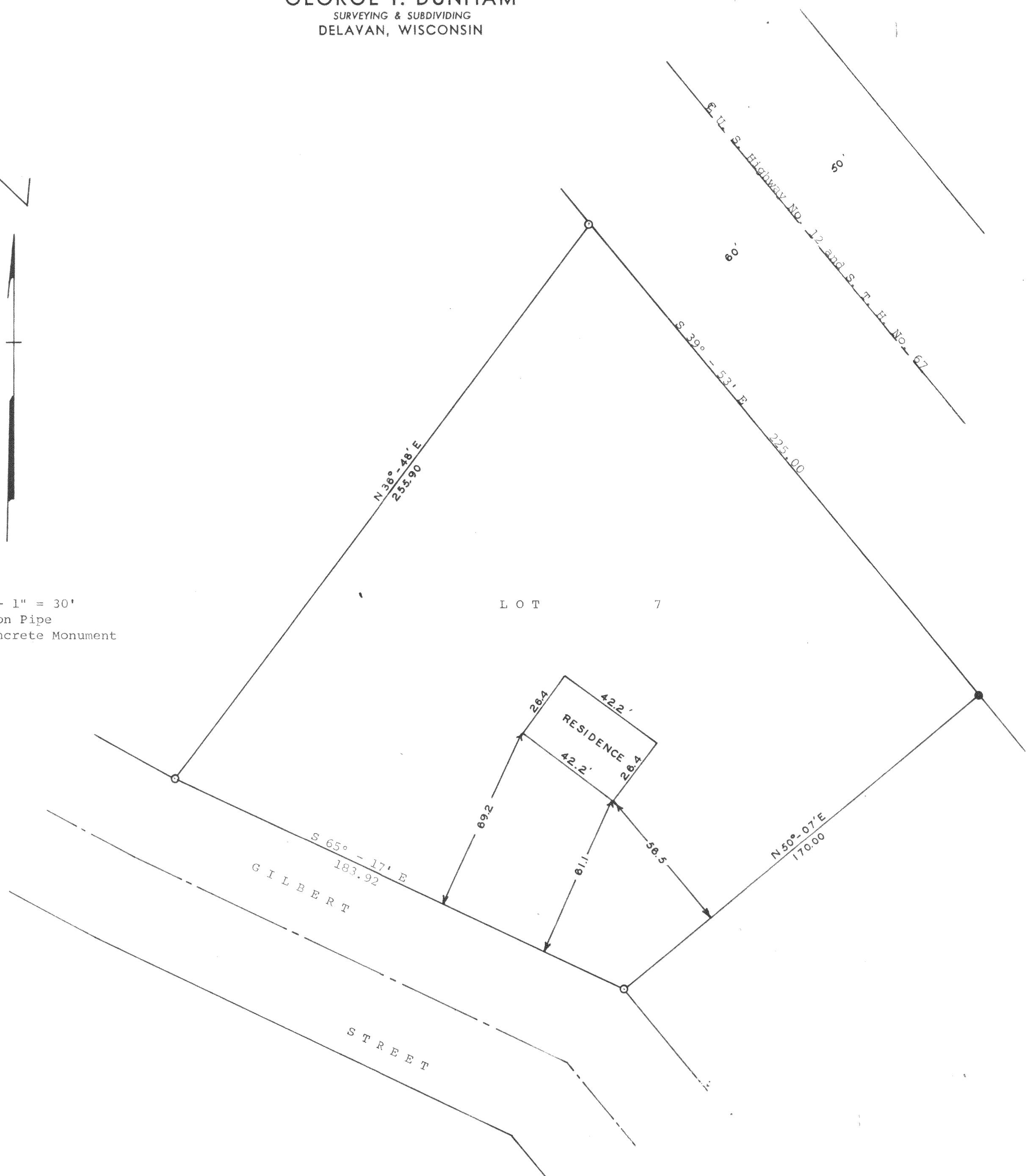


GEORGE T. DUNHAM
SURVEYING & SUBDIVIDING
DELAVER, WISCONSIN

N

Scale - 1" = 30'
○ = Iron Pipe
● = Concrete Monument



STATE OF WISCONSIN)
WALWORTH COUNTY) SS

I, George T. Dunham, Surveyor, do certify that I have surveyed the property described as follows,

Lot 7, of Bethel Heights, a subdivision located in the North ½ of Section 12, T 3 N, R 16 E, Walworth County, Wisconsin. and that the above plat is an accurate survey and a true representation thereof and correctly shows the exterior boundary lines and location of the buildings on said property and the correct measurements thereof. September 23, 1965.

George T. Dunham
George T. Dunham, Surveyor