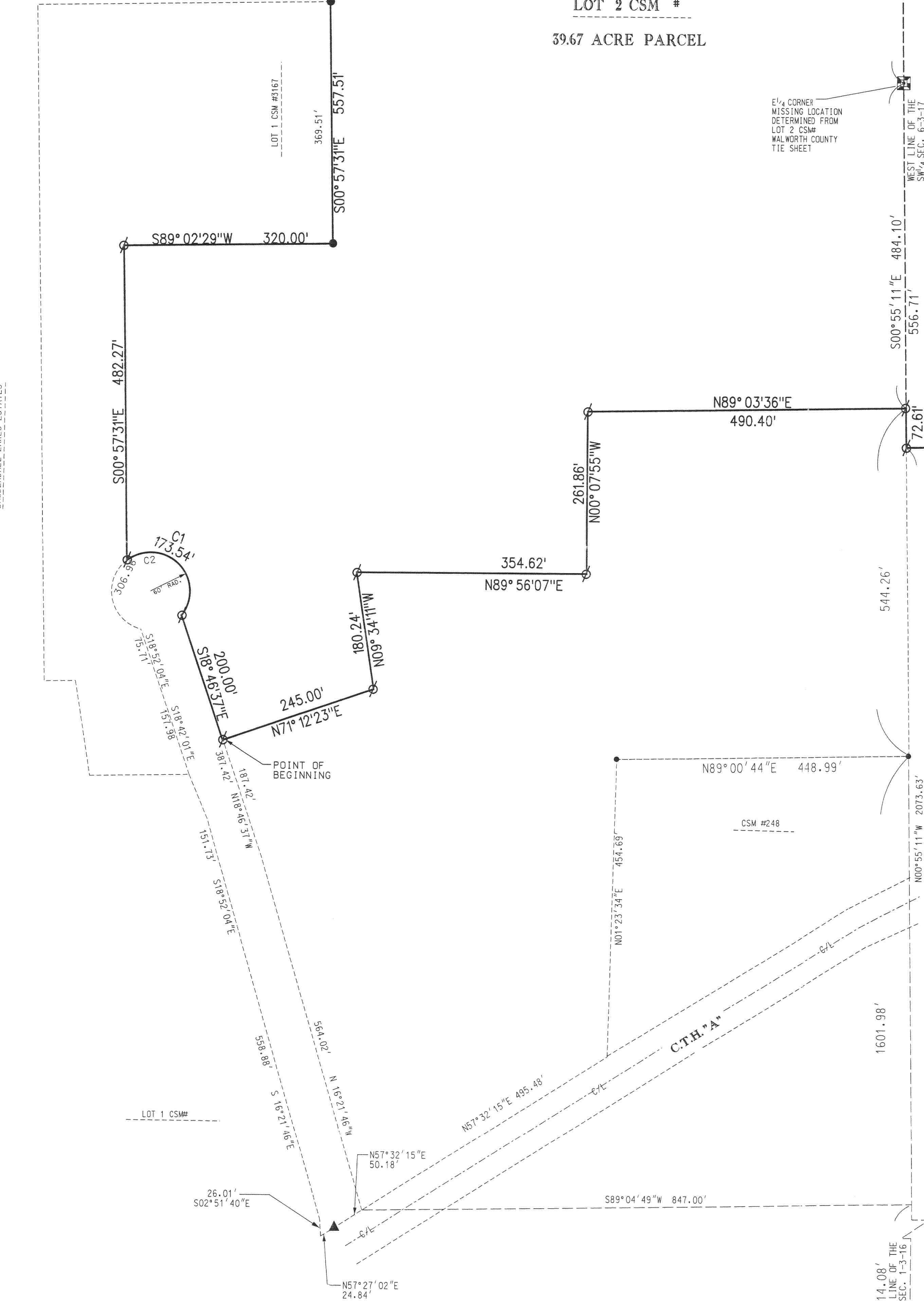


PLAT OF SURVEY

LEGEND

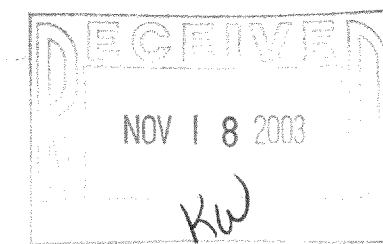
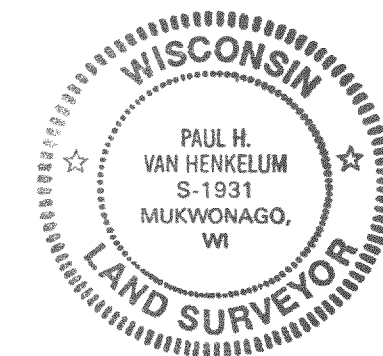
Ø	SET 1.25"x18" IRON PIPE
●	FOUND IRON PIPE
▲	FOUND PK NAIL
■	CONCRETE MONUMENT



LEGAL DESCRIPTION:
BEING A PART OF THE SW¹/₄ OF THE NW¹/₄ AND PART OF THE NW¹/₄ OF THE SW¹/₄ OF SECTION 6, TOWN 3 NORTH, RANGE 17 EAST, TOWN OF LA FAYETTE, AND THE SE¹/₄ OF THE NE¹/₄ AND THE NE¹/₄ OF THE SE¹/₄ OF SECTION 1, TOWN 3 NORTH, RANGE 17 EAST, TOWN OF SUGAR CREEK, WALWORTH COUNTY, WISCONSIN BEING COMPLETELY DESCRIBED AS FOLLOWS: COMMENCING AT THE SE CORNER OF SAID SECTION 1; THENCE WITH THE EAST LINE OF SAID SE¹/₄ NO⁰°55'11"W, A DISTANCE OF 847.00' TO A POINT; THENCE N16°21'46"W, A DISTANCE OF 564.02' TO A POINT; THENCE N18°46'37"W, A DISTANCE OF 187.42' TO THE POINT OF BEGINNING; THENCE N71°12'23"E, A DISTANCE OF 245.00' TO A POINT; THENCE N09°34'11"W, A DISTANCE OF 180.24' TO A POINT; THENCE N89°56'07"E, A DISTANCE OF 354.62' TO A POINT; THENCE N00°07'55"W, A DISTANCE OF 261.86' TO A POINT; THENCE N89°03'36"E, A DISTANCE OF 490.40' TO A POINT; THENCE S00°55'11"E, A DISTANCE OF 556.71' TO A POINT; THENCE S00°52'48"W, A DISTANCE OF 653.13' TO A POINT; THENCE N89°12'43"W, A DISTANCE OF 361.67' TO A POINT; THENCE N89°02'19"E, A DISTANCE OF 361.67' TO A POINT; THENCE N89°12'43"W, A DISTANCE OF 780.57' TO A POINT; THENCE S00°57'31"E, A DISTANCE OF 354.64' TO A POINT; THENCE S89°02'29"W, A DISTANCE OF 100.00' TO A POINT; THENCE S00°57'31"E, A DISTANCE OF 557.51' TO A POINT; THENCE S89°02'29"W, A DISTANCE OF 320.00' TO A POINT; THENCE S00°57'31"E, A DISTANCE OF 482.27' TO A POINT ON A CURVE; SAID CURVE HAVING A RADIUS OF 60.00', A CHORD THAT BEARS S45°00'20"E FOR A DISTANCE OF 119.07' TO A POINT; THENCE S18°46'37"E, A DISTANCE OF 200.00' TO THE POINT OF BEGINNING. SAID PARCEL CONTAINS 39.67 ACRES MORE OR LESS.

SURVEYOR'S CERTIFICATE:
I, PAUL H. VAN HENKELUM, R.L.S. # 1931 HEREBY CERTIFY THAT THIS SURVEY WAS MADE IN ACCORDANCE WITH THE MINIMUM STANDARDS FOR PROPERTY SURVEYS (CHAPTER A-ET) STATE OF WISCONSIN AND HAS BEEN PREPARED UNDER MY DIRECTION AND CONTROL AND IS CORRECT TO THE BEST OF MY KNOWLEDGE AND BELIEF.

PAUL H. VAN HENKELUM, R.L.S. # 1931



CURVE DATA

#	ARC	DELTA	RADIUS	CHORD	BEARING
C1	173.54'	165°43'04"	60.00'	119.07	S45°00'20"E
C2	306.96'	293°07'43"	60.00'	66.12	S71°17'30"W

INITIALS	DATE
DESIGN P.V.H.	9/23/03
CHECKED P.V.H.	9/23/03
PROJECT NO.	03224

1" = 100'

RSV
ENGINEERING, INC.
Engineers • Land Surveyors • Environmental Scientists
801 MAIN STREET, MUKWONAGO, WISCONSIN 53149 (262) 363-2004

RSV • RSVDATA5/03224/03244PLAT.DGN 9/18/03

316-1565