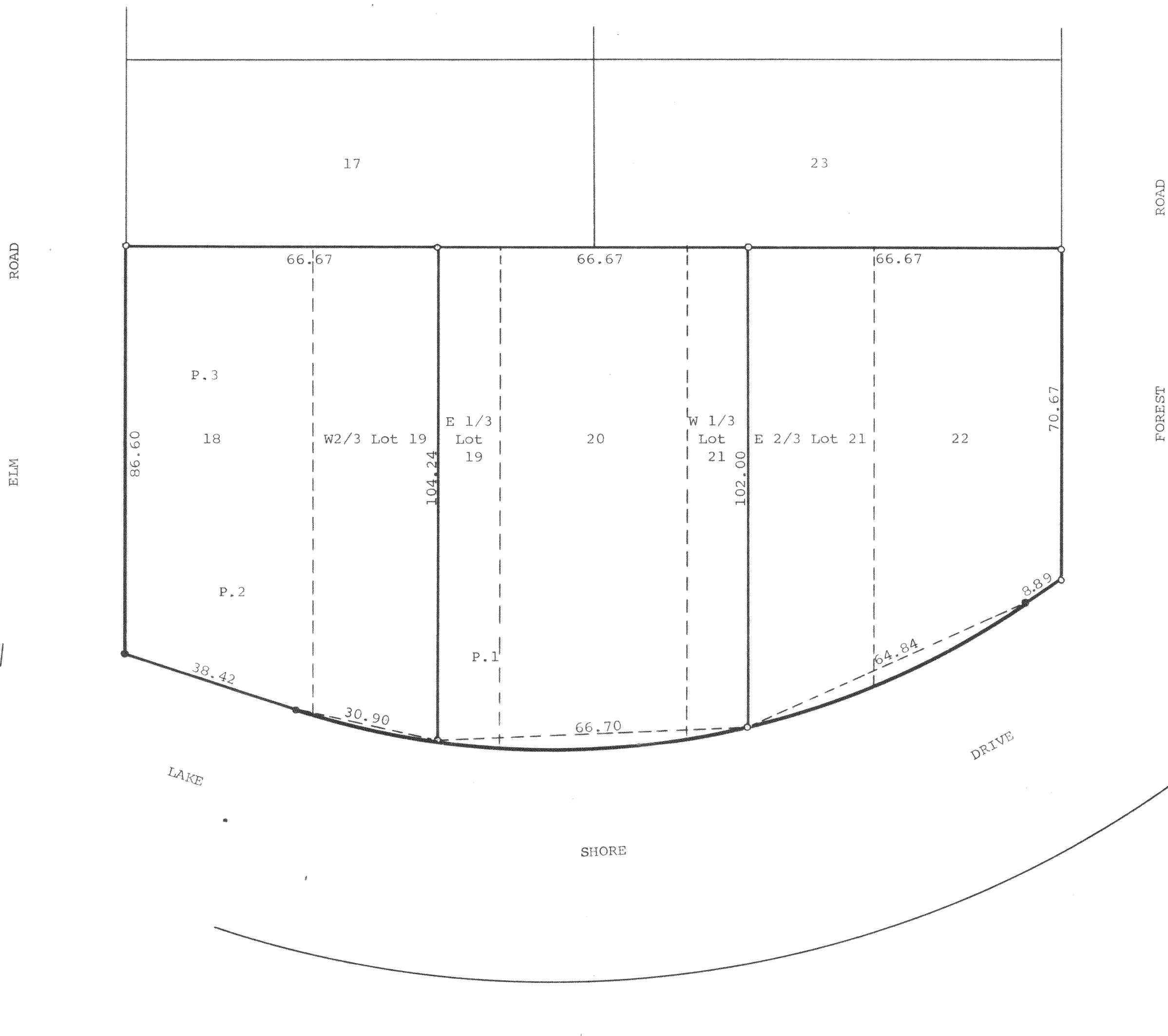


GEORGE T. DUNHAM
SURVEYING & SUBDIVIDING
DELAVAN, WISCONSIN



South Line of Lot 20 is 112' ± from Water Edge of Silver Lake
Lake Elevation = 100.00
P.1 " = 110.2
P.2 " = 110.4
P.3 " = 110.8

Scale - 1" = 20'
○ = Iron Pipe
● = Concrete Monument

Plat of survey of Lots 18-22 Inclusive in Block 12 of Interlaken, a subdivision located in the Town of Sugar Creek, Walworth County, Wisconsin.
November 25, 1966
Revised April 28, 1967 *George T. Dunham*
George T. Dunham, Surveyor