

ROBERS & BOYD, INC.
CONSULTING ENGINEERS & LAND SURVEYORS

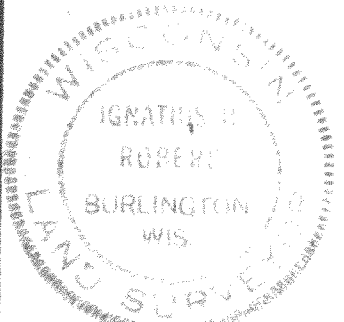
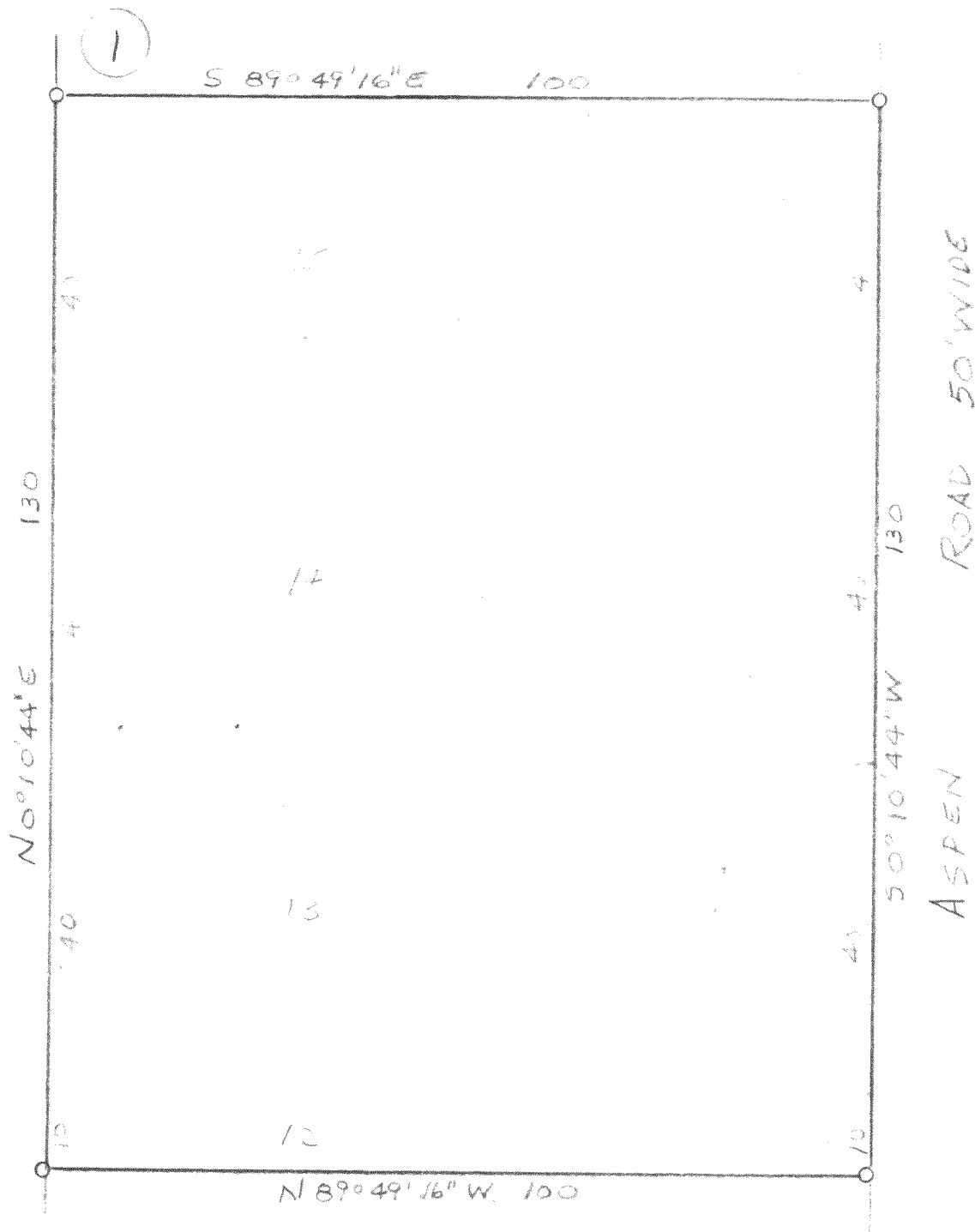
PHONE (414) 763-2652

116 E. CHESTNUT ST.

BURLINGTON, WIS. 53105

THIS SURVEY WAS MADE BY THE ABOVE NAMED ENGINEERS AND SURVEYORS

ON THE 10th DAY OF NOVEMBER 1973, AND THE RESULTS THEREOF ARE SET FORTH IN THIS PLAN, WHICH IS A CORRECT REPRESENTATION OF SAID SURVEY.



- LEGEND -
 SET 1/2004 1/2

I HEREBY CERTIFY THAT WE HAVE SURVEYED THE LANDS DESCRIBED ABOVE ACCORDING TO OFFICIAL RECORDS AND THAT THE PLAN DRAWN HEREON IS A CORRECT REPRESENTATION OF SAID SURVEY.

GI-2A1

SCALE 1" = 20'

316-115

WIS. REG. LAND SURVEYOR 500977

DATE 11-6-73

JOB NO. 73195-D