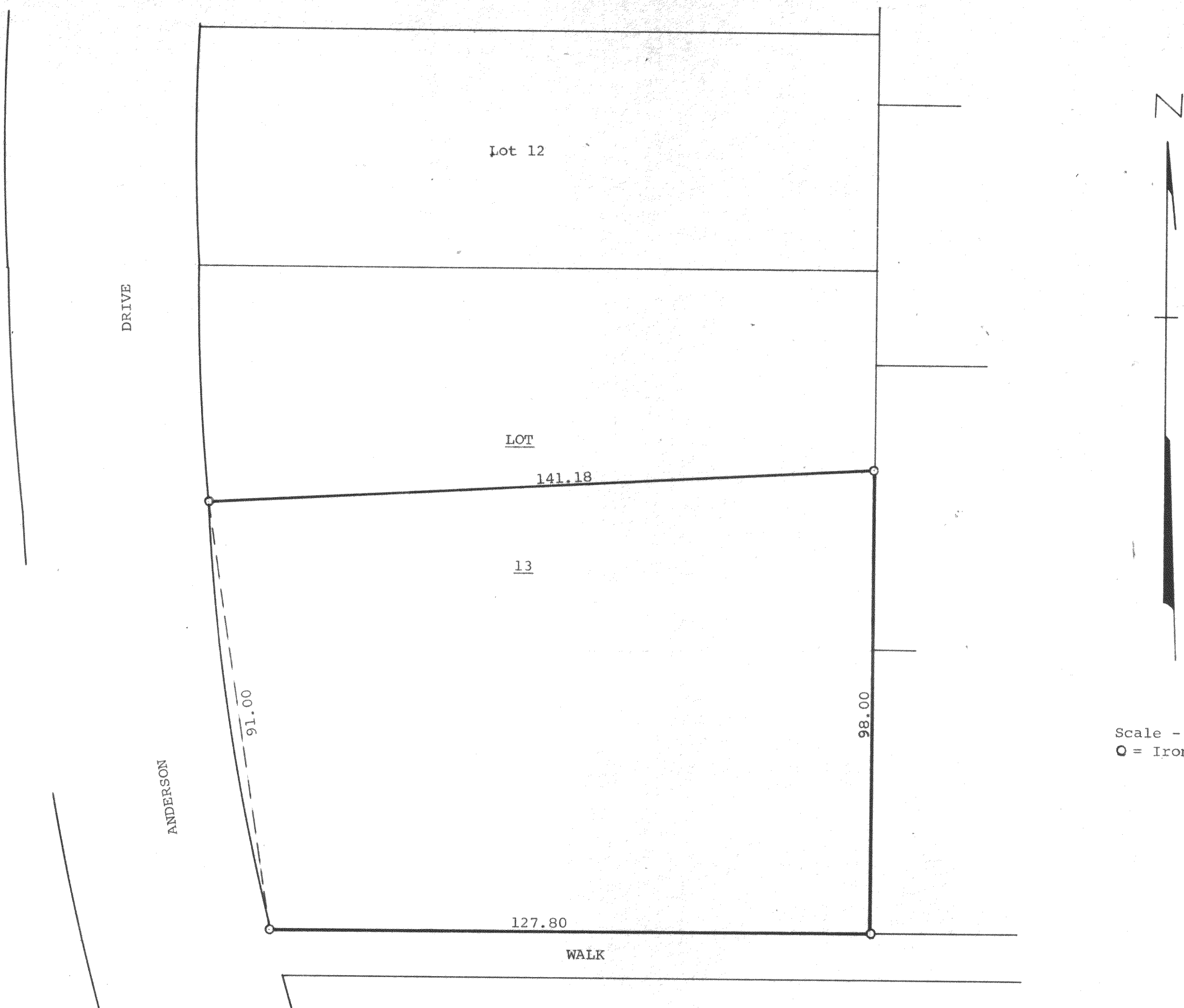


GEORGE T. DUNHAM
SURVEYING & SUBDIVIDING
DELAVER, WISCONSIN



Scale - 1" = 20'
O = Iron Pipe

CCR-85

Plat of survey of a part of Lot 13, Block "D" in Crystal Bowl,
a subdivision located in the Town of Richmond, Walworth County,
Wisconsin.
October 19, 1970

George T. Dunham
George T. Dunham, Surveyor

315-43