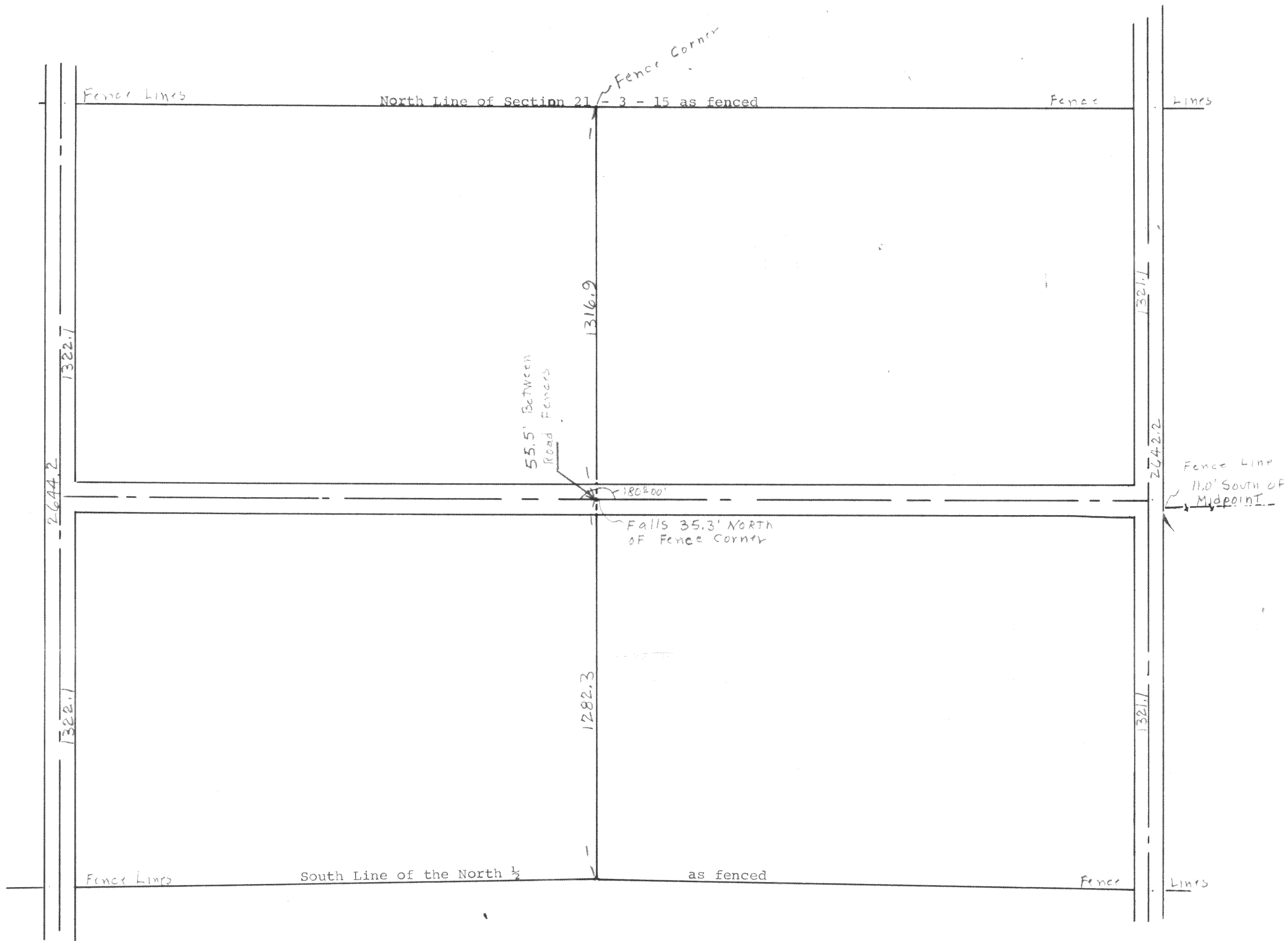


GEORGE T. DUNHAM  
 SURVEYING & SUBDIVIDING  
 DELAVAN, WISCONSIN



R-21-1  
 21-2  
 21-3 + R-21-3B  
 21-4  
 21-5

Sketch showing North-South Measurements of the North 1/2 of Section 21 along and between existing fence lines T 3 N, R 15 E, Walworth County, Wisconsin. July 1966

315-11

*George T. Dunham*  
 George T. Dunham, Surveyor