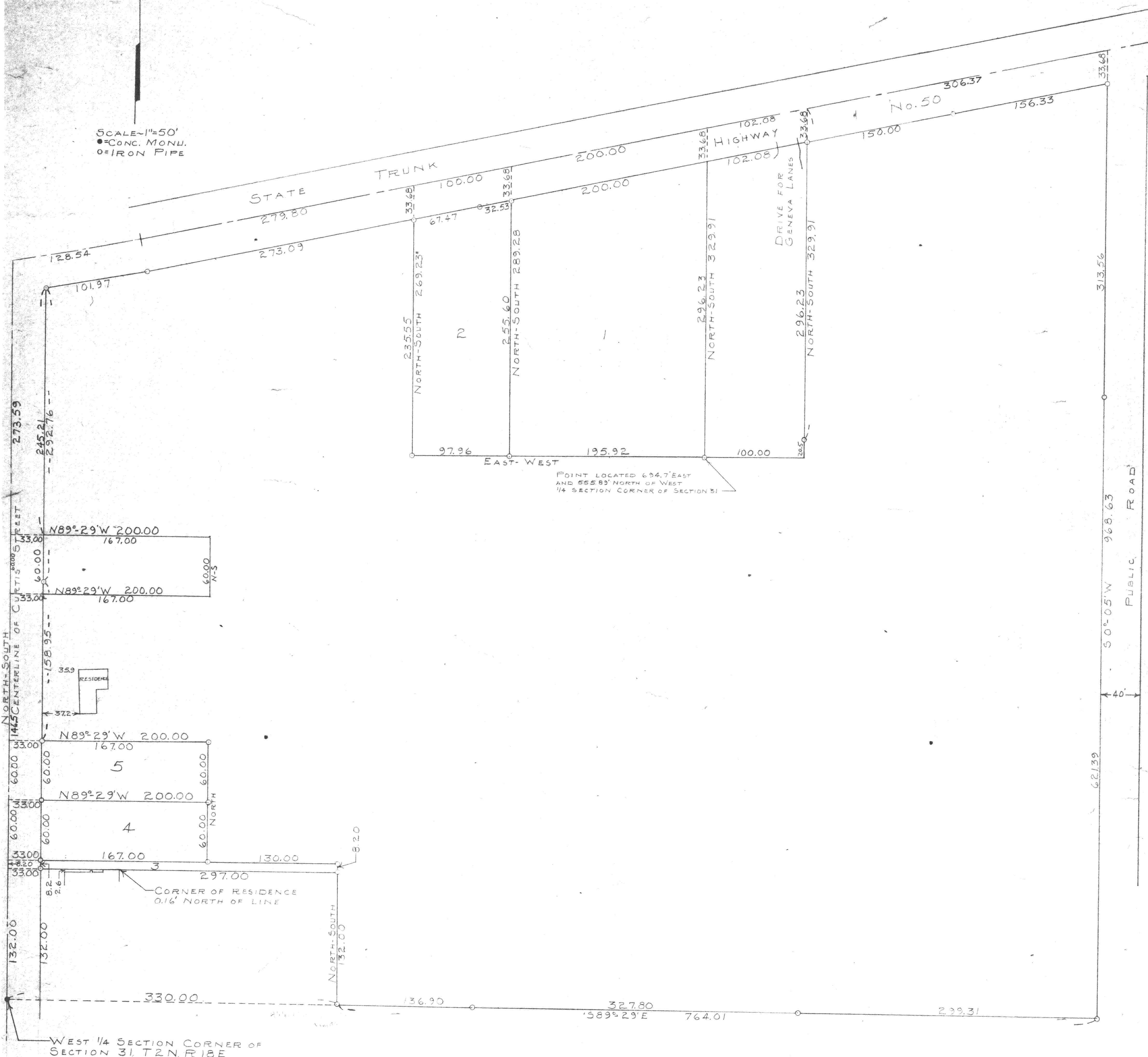


N

SCALE - 1" = 50'
 ● = CONC. MONU.
 ○ = IRON PIPE



POINT LOCATED 694.7' EAST
 AND 555.85' NORTH OF WEST
 1/4 SECTION CORNER OF SECTION 31

PLAT OF SURVEY OF A PARCEL OF LAND LOCATED IN THE
 NORTHWEST 1/4 OF SECTION 31, T2N, R18E OF WALWORTH COUNTY,
 WISCONSIN
 MAY, 1960
 REVISED 7/26/69

George T. Dunham
 GEORGE T. DUNHAM, SURVEYOR

218-19 L

c.s. 97
 Ly-31-4
 31-4P.40
 and = PUP-107 City of Lake Geneva