

May 21, 2013

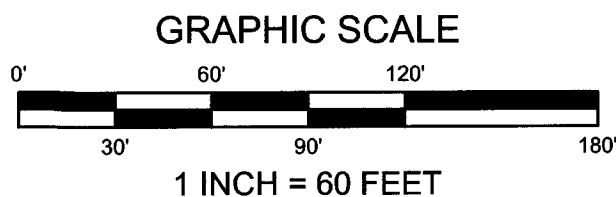
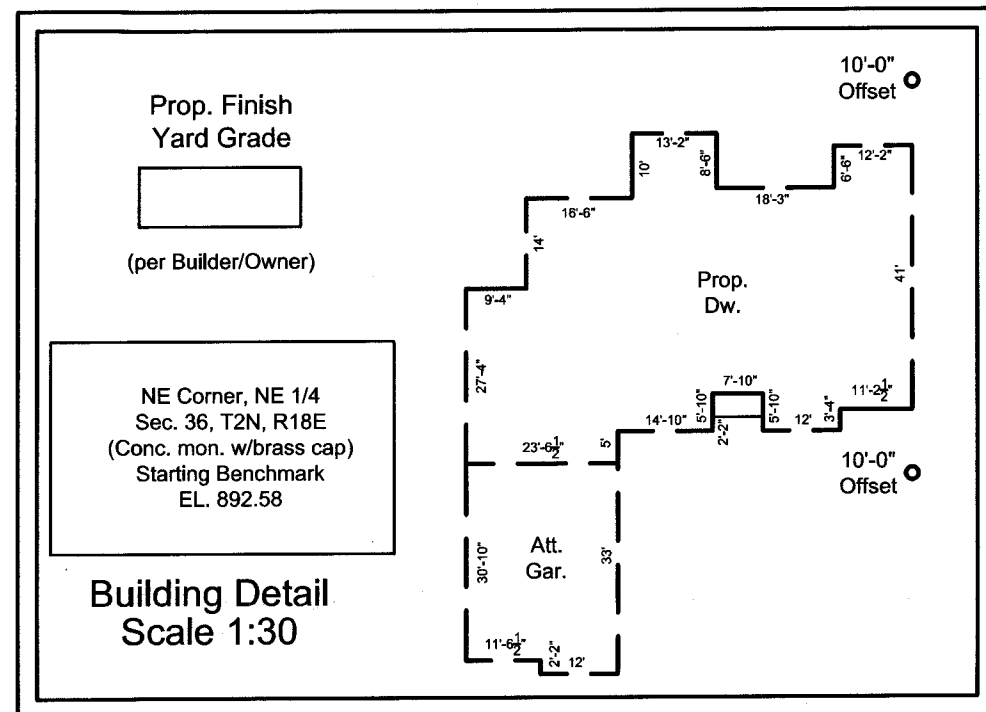
LOCATION: _____ Sherwood Court,
Lyons, Wisconsin

LEGAL DESCRIPTION:

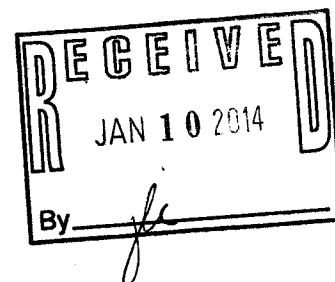
Lot 22, **CRANBERRY KNOLLS**, a Subdivision, located
in the Northeast 1/4 and Southeast 1/4 of the Northeast
1/4 Section 36, Township 2 North, Range 18 East,
Town of Lyons, Walworth County, Wisconsin.

PLAT OF SURVEY

Survey No. 130152
253.009.1300
Belman Homes
Bartleson



NOTE: Proposed finished yard as shown on this drawing is a suggested grade
and should be verified by the owner and/or the builder and approved by the
building inspector. Erosion control measures are suggested and must be
verified/adjusted by the builder and/or building inspector based on site conditions.



Soil Boring
with Lath

Lot 22
163,455 Sq. Ft.
3.75 Acres

S 46°52'19" E 603.32'

Lot 21

S 81°12'58" W 623.19'

Storm Water Management Area Easement
S 81°18'26" W 375.35'

Building Envelope per Plat

Setback Line (Typ.)

12' Utility
Easement

Wood Fence
Enc. 0.4'

Transformer
Electric and
Telephone
Pedestals

L=77.32'
Radius=75.00'
N 72°39'41" E
Chord=73.94'

SHERWOOD COURT

(75' Radius)

Edge of Pavement

Deciduous
Tree (Typ.)

885.43 CL of Ditch

885.57 Top of Slope

Found 3/4" Iron Rod
EL. 885.36

Easem't
L=25.0'

Found 3/4" Iron Rod
EL. 886.55

886.26

886.93

886.09

Prop. Silt
Fence

10'-0" Offset

Prop. Drive
888.07

Att. Gar.

Prop. Dw.

887.85

889.12

889.06

889.01

889.89

10'-0" Offset

888.27

889.27

889.44

889.00

N 74°3' E 256.91'

250.00'

890.81

887.98

258.34'

888.46

N 30°14' W 170.00'

886.64

883.17

882.15

885.78

885.05

884.23

886.51

886.33

S 1°41' E 213.54' (Platted 214.5')

N 0°51'10" E 267.43'

885.84

884.68

885.40

885.66

885.66

885.66

885.66

885.66

885.66

885.66

885.66

885.66

885.66

885.66

885.66

885.66

885.66

885.66

885.66

885.66

885.66

885.66

885.66

885.66

885.66

885.66

885.66

885.66

885.66

885.66

885.66

885.66

885.66

885.66

885.66

885.66

885.66

885.66

885.66

885.66

885.66

885.66

885.66

885.66

885.66

885.66

885.66

885.66

885.66

885.66

885.66

885.66

885.66

885.66

885.66

885.66

885.66

885.66

885.66

885.66

885.66

885.66

885.66

885.66

885.66

885.66

885.66

885.66

885.66

885.66

885.66

885.66

885.66

885.66

885.66

885.66

885.66

885.66

885.66