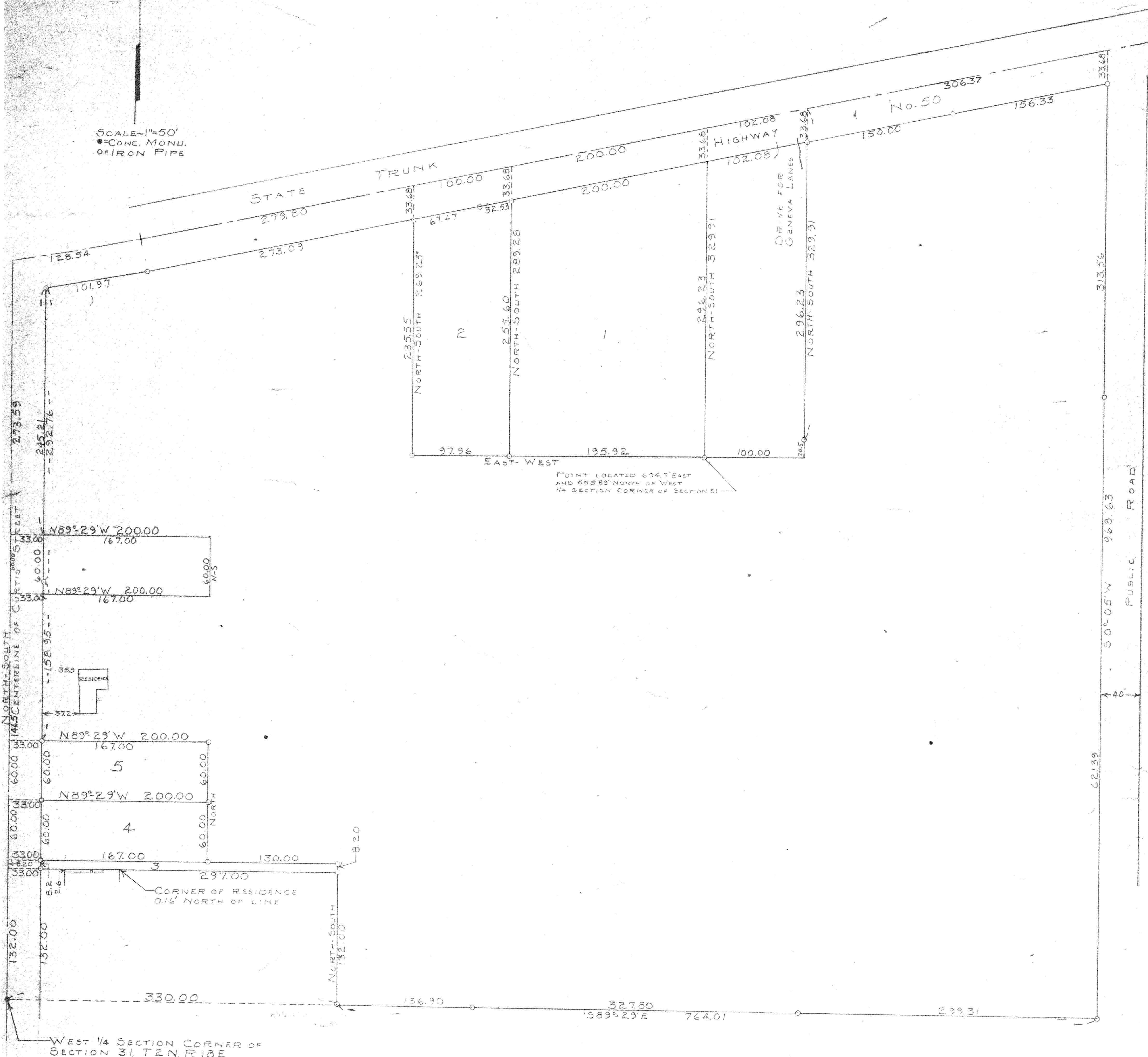


N

SCALE-1"=50'  
 ●=CONC. MONU.  
 ○=IRON PIPE



POINT LOCATED 694.7' EAST  
 AND 555.85' NORTH OF WEST  
 1/4 SECTION CORNER OF SECTION 31

c.s. 97  
 Ly-31-4  
 31-4P.40  
 and = PUP-107 City of Lake Geneva

PLAT OF SURVEY OF A PARCEL OF LAND LOCATED IN THE  
 NORTHWEST 1/4 OF SECTION 31, T2N, R18E OF WALWORTH COUNTY,  
 WISCONSIN  
 MAY, 1960  
 REVISED 7/26/69

*George T. Dunham*  
 GEORGE T. DUNHAM, SURVEYOR

218-19 L