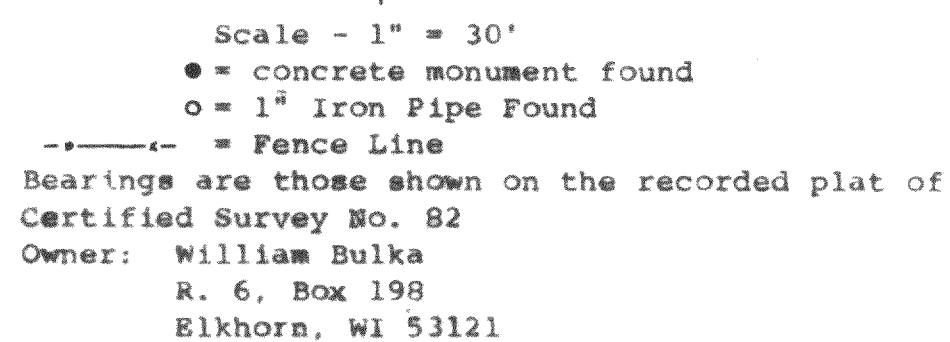


SURVEYING & SUBDIVIDING
DELAVER, WISCONSIN 53115



October 7, 1988

The seal is circular with a double-lined border. Between the lines, the words "WISCONSIN" are at the top and "LAND SURVEYOR" is at the bottom, separated by two five-pointed stars. In the center, the text reads "GEORGE T. DUNHAM", "S-306", and "DELAVER WIS." in three lines.