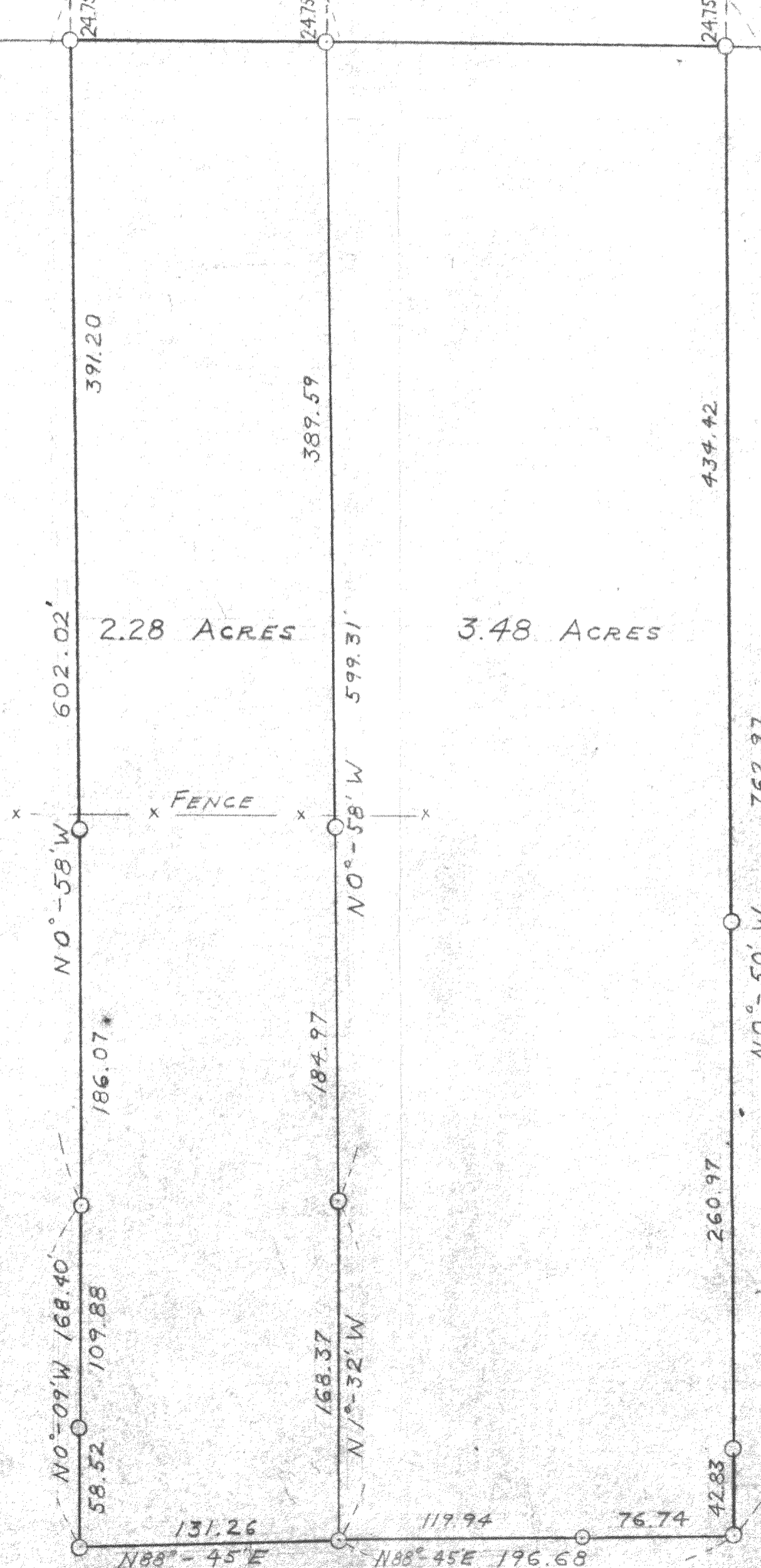


WEST 1/64 TH CORNER OF NW 1/4  
OF NW 1/4 OF SECTION 35,  
T2NR17E

329.68 TOWN 127.22 EAST 200.05 ROAD



SCALE 1" = 60'  
● = CONCRETE MONUMENT  
○ = IRON PIPE



SURVEY OF A PARCEL OF  
LAND IN THE SOUTHWEST 1/4 OF  
THE NORTHWEST 1/4 OF THE  
NORTHWEST 1/4 AND IN THE WEST  
1/2 OF THE SOUTHWEST 1/4 OF  
THE NORTHWEST 1/4 OF  
SECTION 35, T2NR17E OF  
WALWORTH COUNTY, WISCONSIN

Lloyd L Jensen  
WALWORTH COUNTY SURVEYOR  
1952

G-35-9A (now 1 parcel)

217-62.1