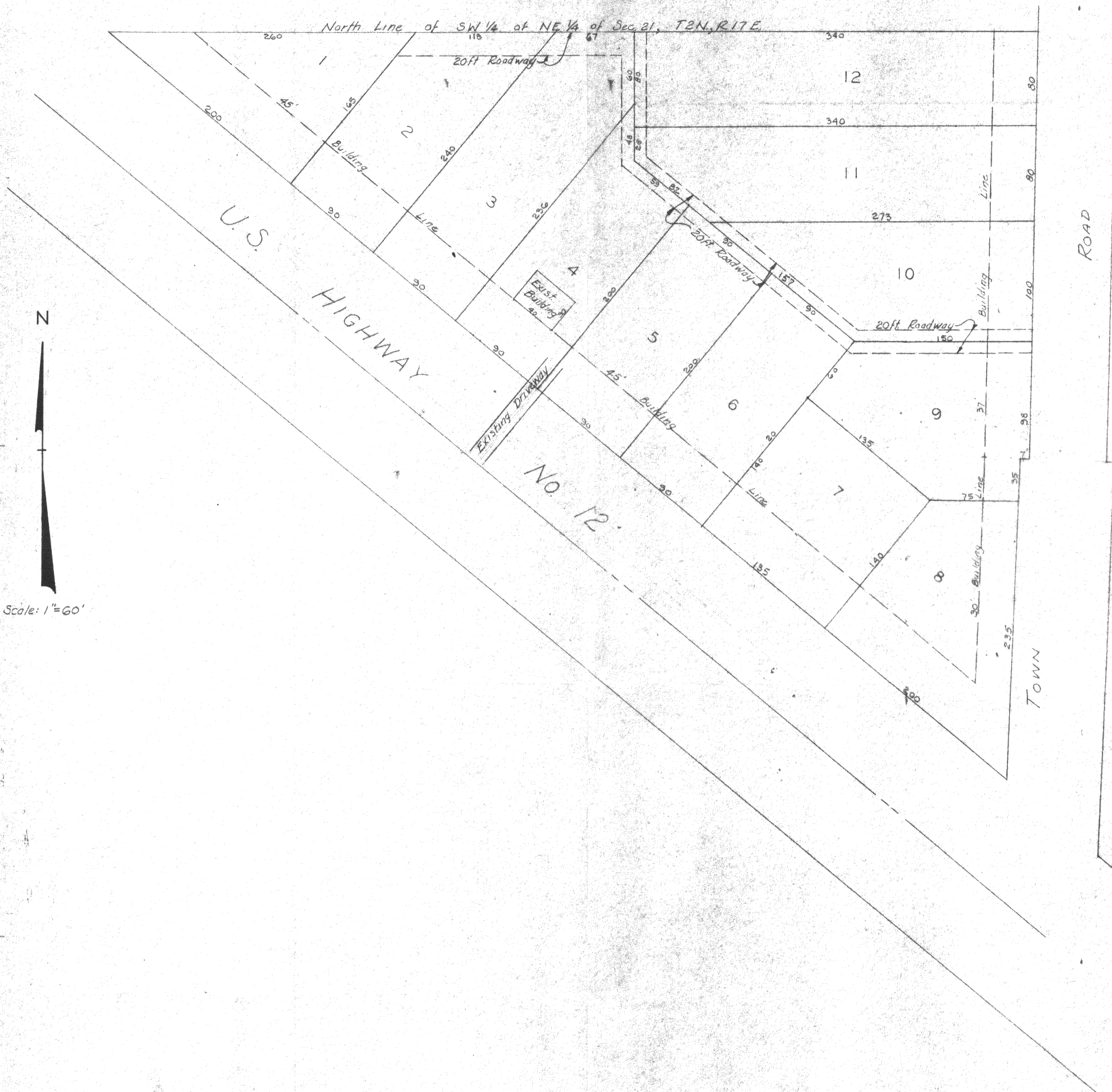


DUNHAM & RASMUSSEN
 SURVEYING & ENGINEERING
 DELAVAN WISCONSIN



TENTATIVE PLAT OF SUBDIVISION OF A PARCEL OF LAND LOCATED
 IN THE SW 1/4 OF THE NE 1/4 OF SEC. 21, T2N, R17E OF WAL-
 WORTH COUNTY, WISCONSIN.

How - G-21-1A
 G-21-1B
 Cert. Sur. 792

3/1/60