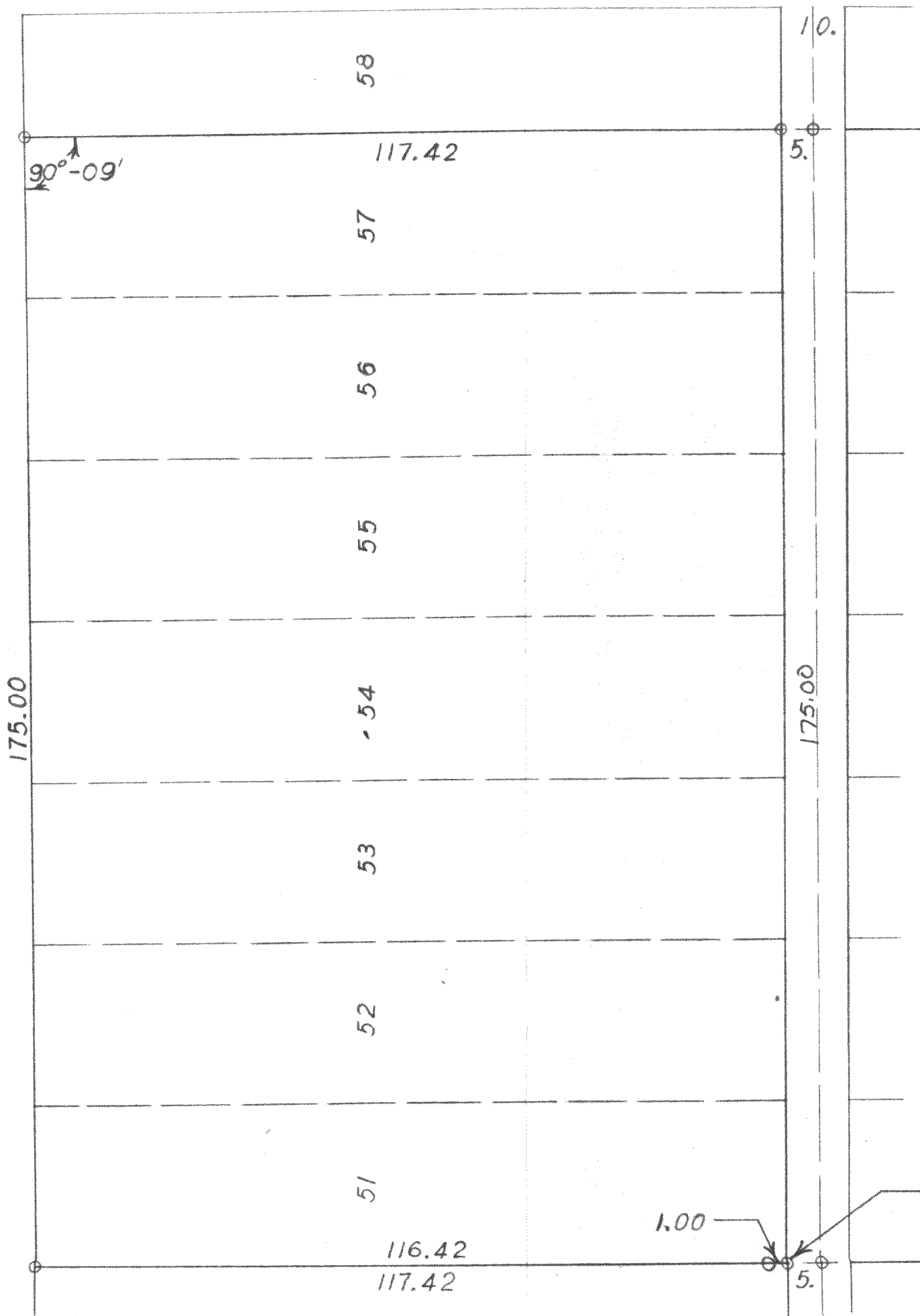


WILLIAMS

STREET



N

SCALE ~ 1" = 20'
O = IRON PIPE

PLAT OF SURVEY OF LOTS 51-57 INCLUSIVE OF THE GUMMOW ADDITION, ~~CITY~~ OF Town of Geneva
GENEVA, WALWORTH COUNTY, WISCONSIN
MAY 15, 1956

George T. Dunham
GEORGE T. DUNHAM, SURVEYOR
DELAN, WISCONSIN

217-27D